



## TS-C 50-1000/T-EN54

- aluminium housing
- weather proof



EN 54-24:2008  
Ref. Nr.: 006-13  
ID-Code: SAA-LS06  
1438/CPD/0315

ic audio GmbH, Boehringerstraße 14a,  
D-68307 Mannheim, Germany

CE-Symbol gemäß Richtlinie 93/68EWG

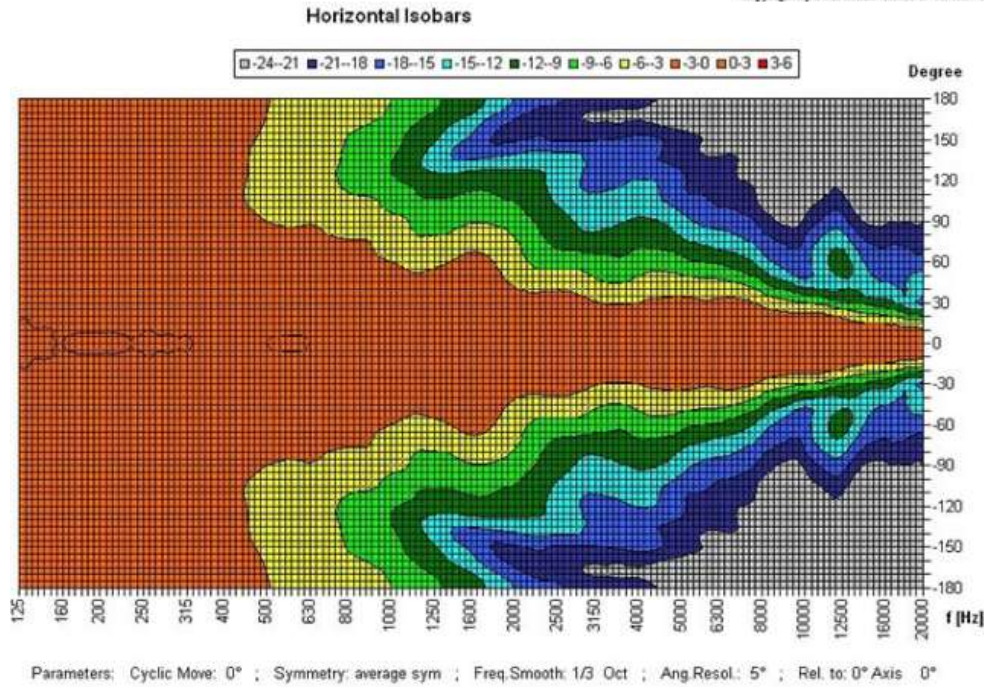
The 50W powered speaker is equipped with eight 77mm full-range loudspeaker chassis and a 100V transformer with 4 power adjustments. The powder coated and shock-resistant aluminium housing in RAL 9006 guarantees long-term stability. For additional reliability, a 2 pin-ceramic block, a thermal fuse is provided and the speaker chassis is impregnated against wetness. Furthermore sturdy cable glands 2 x PG9 are also provided.

The speaker is also secured with the high protection class IP 66 against the security risks of environmental influences.

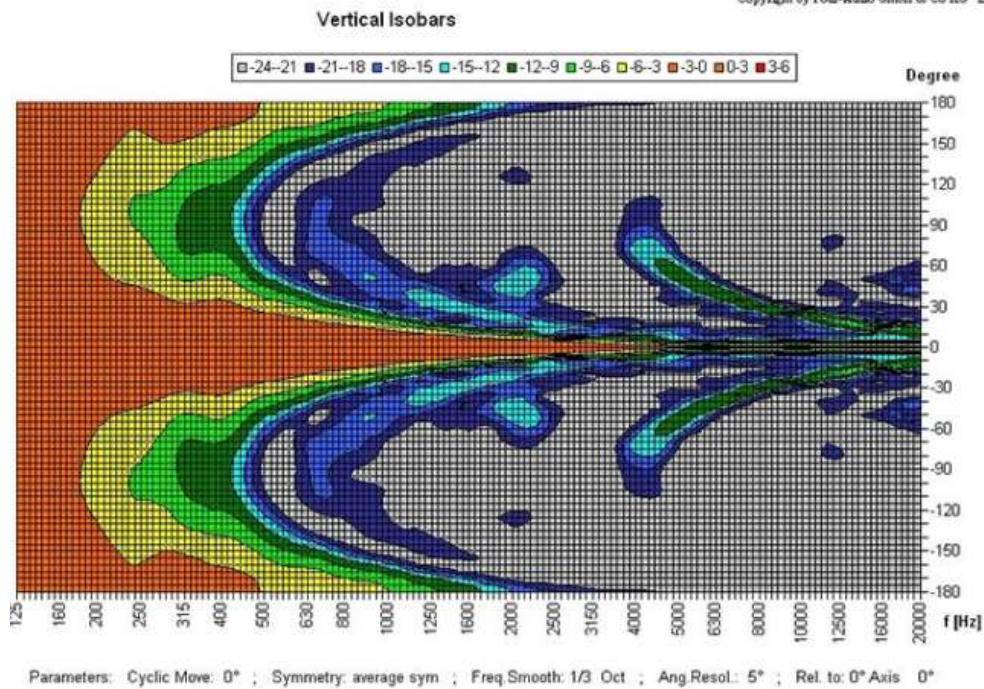
The easy mounting with the included swivel bracket provides much flexibility for the installation. Special paint of the speaker in 4-digit RAL- or NCS- colour available at extra cost.

**Polar Diagrams**

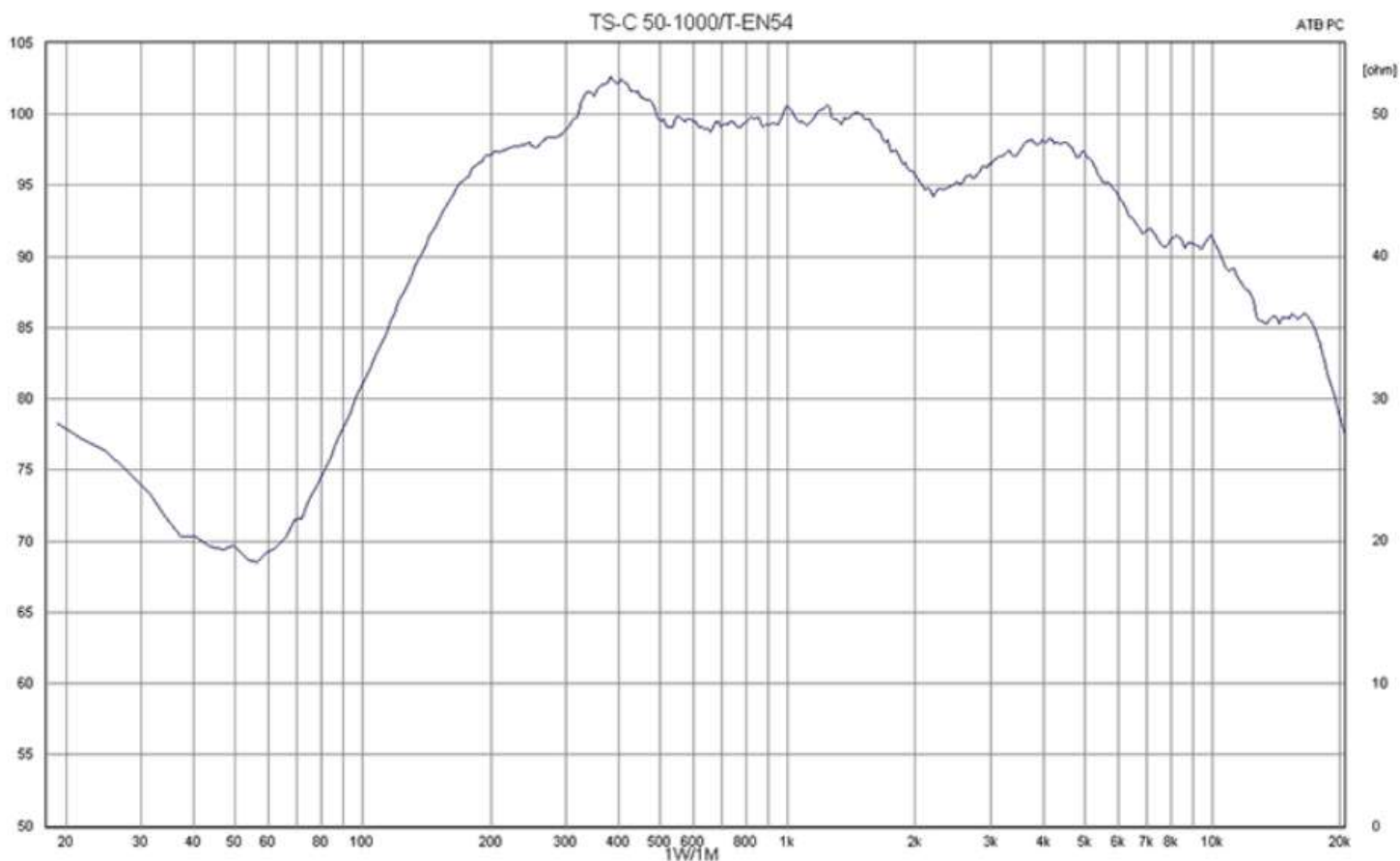
Copyright by Four-Audio GmbH & Co KG. Licensed to AAC



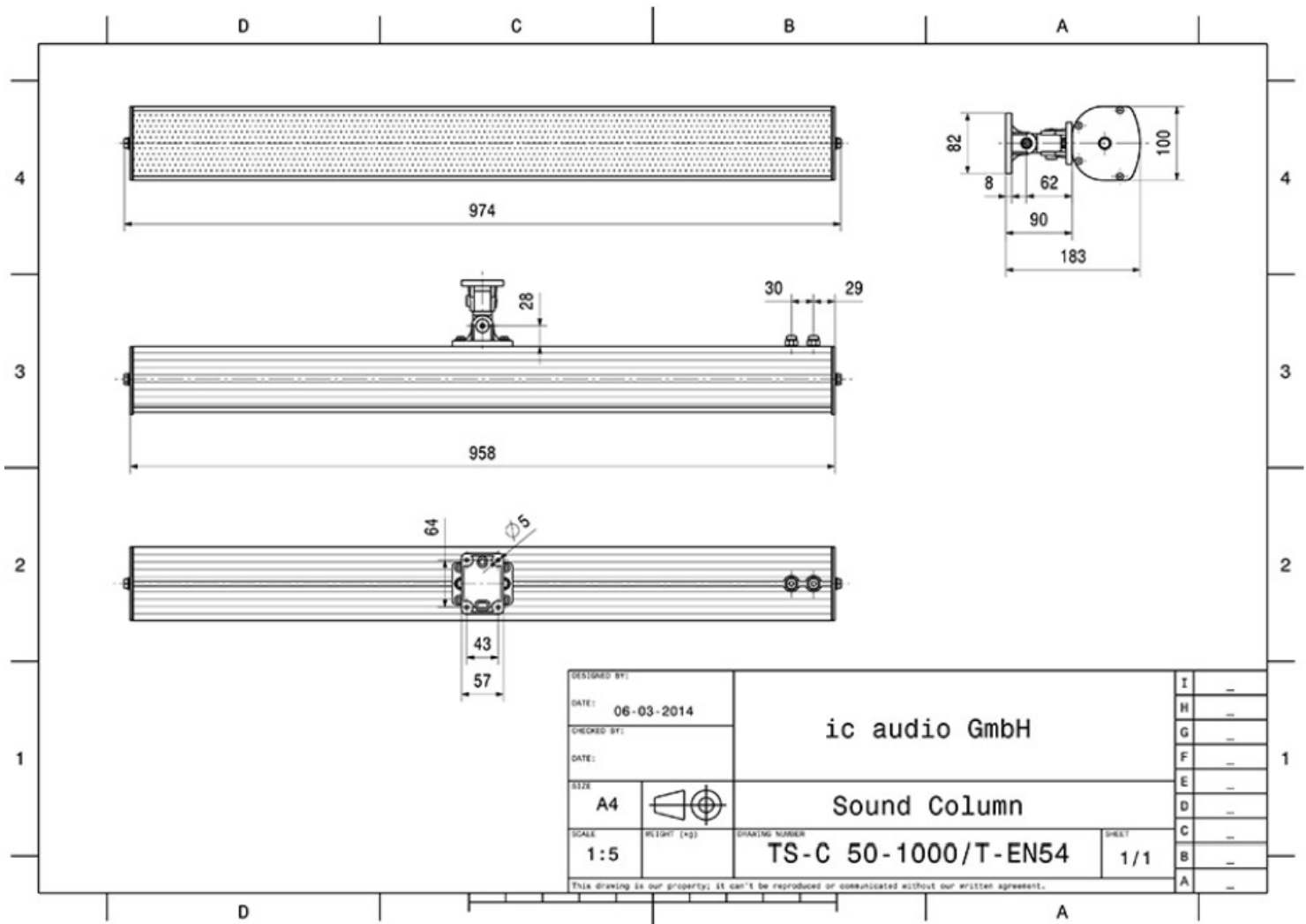
Copyright by Four-Audio GmbH & Co KG. Licensed to AAC



**Frequency Response Diagrams**



**Technical Diagrams**



### Technical Data (Electrical)

Description	TS-C 50-1000/T-EN54
Power	50/30/15/7,5 W
Impedance (100V)	200/333/667/1333 ohm
Frequency Range	250 - 15.800 Hz
Frequency Response	110 - 18.000 Hz
SPL 1W/1m, peak	102,8 dB
SPL, 1W/4m, peak	90,8 dB
SPL Pmax/4m, peak	107,7 dB
Sensitivity EN54-24, 1W/4m	82,7 dB
Sensitivity IEC 268-5, 1W/1m	94,7 dB
Dispersion -6dB, 500 Hz	h=360°, v=73°
Dispersion -6dB, 1KHz	h=186°, v=33°
Dispersion -6dB, 2KHz	h=173°, v=17°
Dispersion -6dB, 4KHz	h=98°, v=6°

### Technical Data (Mechanical)

Dimensions	971x100x92 mm
IP Rating	IP66
Weight (net)	5,20 kg
Temperature range	-20 / +90 °C
Mounting	Swivel bracket
Connector	2-pin ceramic block
Maximum cable cross section	8mm <sup>2</sup>
Max. cable cross section loop	2 x 2 mm <sup>2</sup>
Colour	RAL 9006