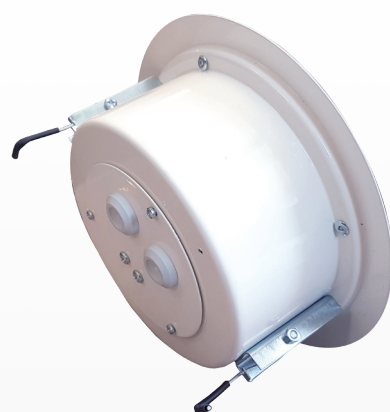




DEL-S 165/10 PP DEL-S 165/10 PP1

Vandal-proof DEL-S 165/10 PP loudspeaker is designed for ceiling assembling but allowed for wall fitting as well. It is made of a high-grade powder-coated steel. Aesthetic and unique loudspeaker's housing, that provides a good quality of the sound, was constructed to prevent its damage and allow secure limited access to the inside of the loudspeaker. DEL-S 165/10 PP is endowed in 165 mm 10W full-range speaker and 100V transformer. The loudspeaker is equipped with a ceramic terminal block and thermal fuse. It is painted in standard RAL 9010, but any other RAL color is available as an option. This loudspeaker is optionally offered in PP1 version – it means instead of ceramic block and thermal fuse it is equipped just with a plastic connection block.



Model	DEL-S 165/10 PP DEL-S 165/10 PP1
Type	ceiling, with fire dome
Application	ceiling/wall
Certificate Number	1438-CPR-0602
Speaker Type	165 mm full-range
Rated power [W]	10
Driver impedance [Ω]	8
Impedance 100V [Ω]	1000/1666/3333/6666
Tappings 100V [W]	10/6/3/1,5
Frequency Range (-10dB) [Hz]	300-16000*
SPL 1W/1 m [dB]	93**
SPL Pmax/1 m [dB]	103**
Sensitivity 1W/4 m EN 54-24 [dB]	81
SPL max (rated noise power/4 m) EN 54-24 [dB]	91
Dispersion -6dB, 500 Hz/1 kHz/2 kHz/4kHz [°]	65/145/180/180
Connection PP/PP1	2x3 pole ceramic cube/ 2x2 pole connector
Temperature range [°C]	<-10, +55>
Type A/B/C	A
IP Rating according to EN 54-24 / IP Rating	32C
Dimensions [mm]	Ø210x75
Weight with fire dome [kg]	1,38
Material	powder-coated steel panel
Colour	RAL 9010
Packing Unit	12

* measured in institute other than BIP CNBOP - following PN-EN 60268-5:2005

**parameter calculated

