

# IVO Compact Voice Alarm System

IVO Compact is a PA/VA System, dedicated to small and medium facilities, designed for wall mounting and Plug & Play experience - programmed and ready to start immediately after installation.

IVO Compact allows full phase evacuation (2 audio streams at the time) and up to 16 loudspeaker lines totaling of up to 1000 W of connected loudspeakers, equaling to classic voice alarm systems in terms of functionality, while reducing the cost of the system. Emergency power supply system allows to provide up to 24 hours of standby time and 30 minutes of alarming time. Additionally, it is possible to extend the alarming and standby time by additional housing with bigger capacity batteries.

The system is fully compatible with the flagship PA/VA IVO rack system, using the same range of console microphones and intercoms, as well can be networked with IVO PA/VA system.

The basic version can be extended by additional extension modules (KKOC, WAAC, KSSC).



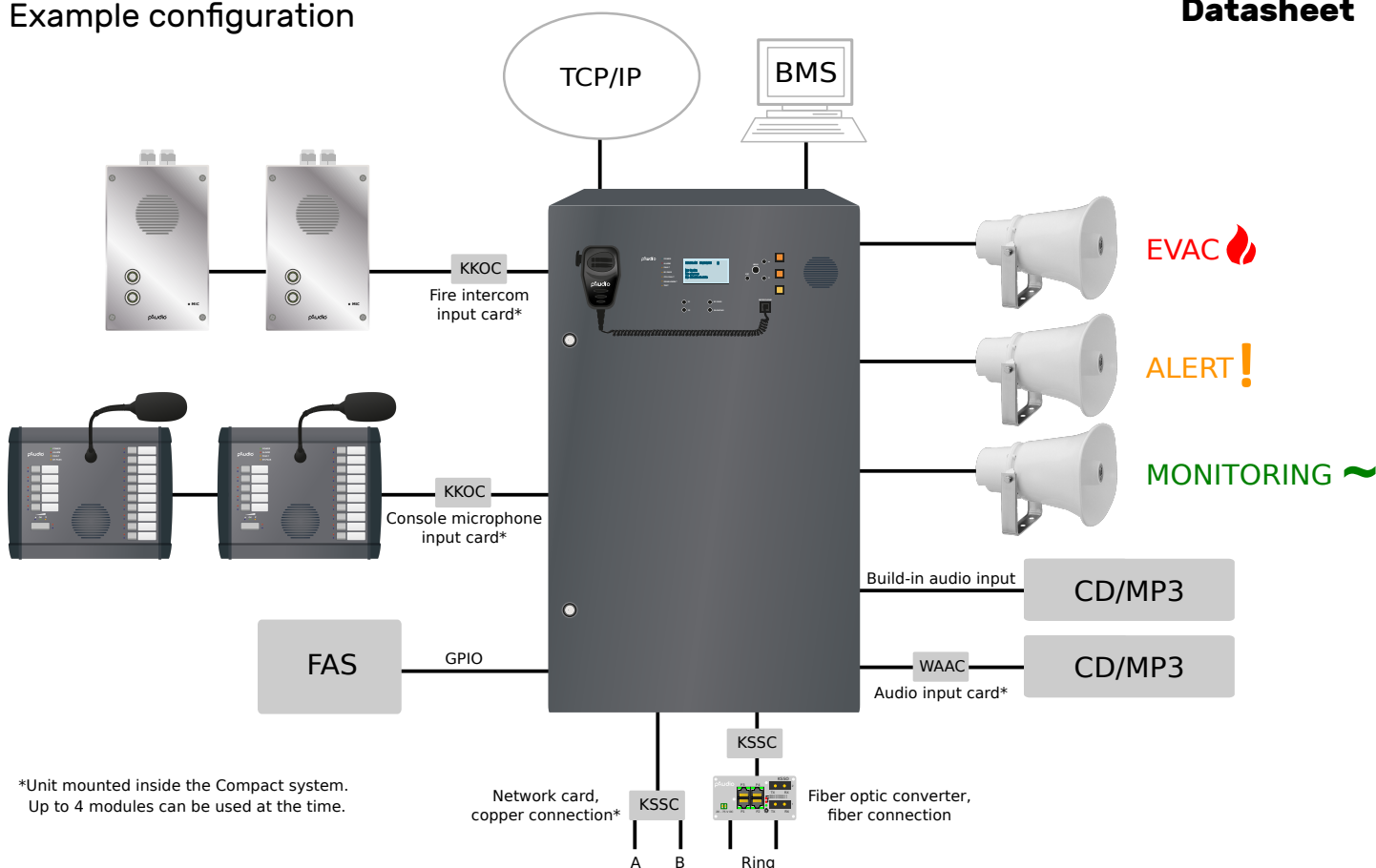
1438-CPR-0985

CoA 5266/2024

## Features

- A fully equipped VACIE system
- Plug & Play
- Compliant with EN54 standards
- Up to 16 single or A/B loudspeaker lines
- Maximum 500 W or 125 W power load per line
- Maximum 1000 W power load per unit
- Phase evacuation with separate redundant amplifier
- Main processor with secondary bypass processor
- Real-time system monitoring
- 32-bit DSP audio processor
- Up to 32 subsystems in network
- Wide frequency response
- CD quality Audio
- Ultra-low quiescent mode
- Modbus for 3rd party integration
- 12 monitored control inputs
- 3 output relays
- Built-in LCD screen
- Built-in monitoring loudspeaker
- Built-in hand-held alarm microphone
- 4 slots for additional system cards
- Diagnostic USB port on the front

**Example configuration**



**Technical specification**

**General**

Power supply	230 V AC, -15 % / +10 %
Total efficiency	> 86%
Idle consumption	< 5 W
Standards	EN54, CE
Mechanical	200 x 530 x 930 mm
Battery enclosure	200 x 530 x 200 mm (optional)
Operating temp.	-5 °C...+40 °C
Relative humidity	25%...90%
Indicators	Power, Alarm, Fault, Bypass, CPU fault, Disablement, Test

**Connectors**

Main supply 230 V AC,  
12x control inputs, 3x relay  
outputs, 1x RS232/485,  
1x RS485, 1x Ethernet, 1x USB  
1x symmetrical audio input

**Audio specification**

Frequency response	10 Hz...30 kHz (- 3 dB)
THD+N distortion	< 0,1 % (1 kHz)
Signal / noise ratio	> 86 dB
Digital audio format	PCM 16 Bit/ 48 kHz

**Others**

3rd party integration	1x RS232/RS485 (Modbus)
Maintenance	1x USB, 1x Ethernet
Log event buffer	2048
Enclosure type	Metal, IP30
Max. battery capacity	Depends on the power supply
Extensions	KKOC microphone input card WAAC audio input card KSSC network card
Color	RAL7015 (Custom RAL available)

## Specification per version

## Datasheet

## 1-channel system, 500 W RMS

C-04-500-1	<b>4 lines</b> - (4x500 W)*, <b>handheld microphone, redundant/monitoring amplifier</b> (IVO C0, UIC, MR, 4SGC, 2x WB501, power supply + battery charger, wall-mount housing)
C-08-500-1	<b>8 lines</b> - (8x125 W)*, <b>handheld microphone, redundant/monitoring amplifier</b> (IVO C8, UIC, MR, 2x WB501, power supply + battery charger, wall-mount housing)
C-12-500-1	<b>12 lines</b> - (4x500 W, 8x125 W)*, <b>handheld microphone, redundant/monitoring amplifier</b> (IVO C8, UIC, MR, 4SGC, 2x WB501, power supply + battery charger, wall-mount housing)
C-16-500-1	<b>16 lines</b> - (16x125 W)*, <b>handheld microphone, redundant/monitoring amplifier</b> (IVO C8, UIC, MR, 8SGC, 2x WB501, power supply + battery charger, metal wall-mount casing)

## 1-channel system, 1000 W RMS

C-04-1000-1	<b>4 lines</b> - (4x500 W)*, <b>handheld microphone, redundant/monitoring amplifier</b> (IVO C0, UIC, MR, 4SGC, 3x WB501, power supply + battery charger, wall-mount housing)
C-08-1000-1	<b>8 lines</b> - (8x125 W)*, <b>handheld microphone, redundant/monitoring amplifier</b> (IVO C0, UIC, MR, 8SGC, 3x WB501, power supply + battery charger, wall-mount housing)
C-12-1000-1	<b>12 lines</b> - (4x500 W, 8x125 W)*, <b>handheld microphone, redundant/monitoring amplifier</b> (IVO C8, UIC, MR, 4SGC, 3x WB501, power supply + battery charger, wall-mount housing)
C-16-1000-1	<b>16 lines</b> - (16x125 W)*, <b>handheld microphone, redundant/monitoring amplifier</b> (IVO C8, UIC, MR, 8SGC, 3x WB501, power supply + battery charger, wall-mount housing)

## 2-channels system, 500 W RMS

C-04-500-2	<b>4 lines</b> - (4x500 W)*, <b>handheld microphone, redundant/monitoring amplifier</b> (IVO C0, UIC, MR, 4SGC, 3x WB501, power supply + battery charger, wall-mount housing)
C-08-500-2	<b>8 lines</b> - (8x125 W)*, <b>handheld microphone, redundant/monitoring amplifier</b> (IVO C0, UIC, MR, 8SGC, 3x WB501, power supply + battery charger, wall-mount housing)
C-12-500-2	<b>12 lines</b> - (4x500 W, 8x125 W)*, <b>handheld microphone, redundant/monitoring amplifier</b> (IVO C8, UIC, MR, 4SGC, 3x WB501, power supply + battery charger, wall-mount housing)
C-16-500-2	<b>16 lines</b> - (16x125 W)*, <b>handheld microphone, redundant/monitoring amplifier</b> (IVO C8, UIC, MR, 8SGC, 3x WB501, power supply + battery charger, wall-mount housing)

\* Maximum load per loudspeaker line

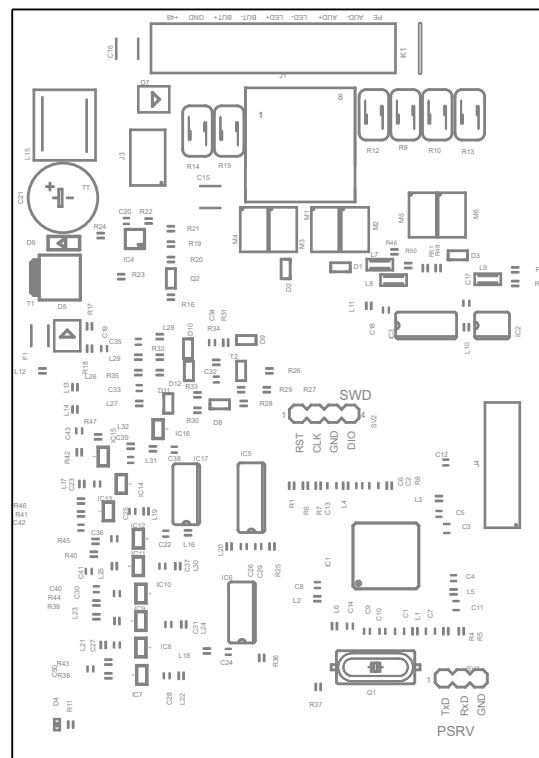
# Extension modules

## KKOC - console microphone card

KKOC card allows to connect alarm (MA, MAR), paging (MI) console microphones and fire intercoms (INT) to IVO Compact.

### Features

- Support of up to 8 microphone consoles or 8 intercoms
- 32-bit DSP audio processor
- Digital communication
- Maximum cable length 1200 m (RS485)
- Optional redundant fiber connection with alarm microphones
- Wide frequency response
- Ultra-low quiescent mode
- Direct supply of connected units (copper connection)
- Over voltage, over current and short circuit protection

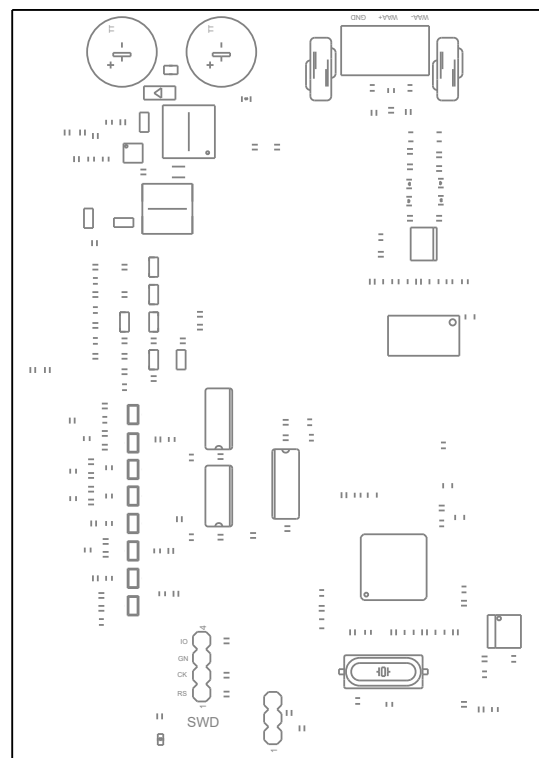


## WAAC - audio input card

WAAC card allows to connect any kind of analog audio sources and background measurement microphones (MPT) to the IVO Compact.

### Features

- Symmetrical 0 dB input
- Phantom power
- 32-bit DSP audio processor
- Wide frequency response
- Ultra-low quiescent mode



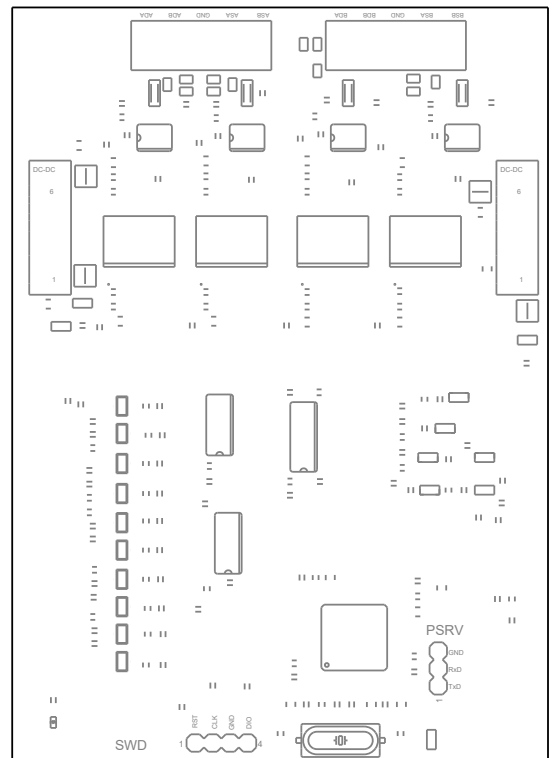
# Extension modules

## KSSC - network card

The KSSC card allows to link and communicate IVO Compact with any other IVO system..

### Features

- Up to 32 subsystems in network
- Redundancy of transmission path
- No significant audio signal delays between subsystems
- Full synchronization of messages between main units
- Galvanic isolated circuits
- Digital communication
- Maximum cable length between subsystems 1200 m (RS485)
- Point-point, multi-point or ring configuration
- Ultra-low quiescent mode
- Over voltage, over current and short circuit protection



# I/O compatible equipment

## Console microphones

MA10 Emergency gooseneck microphone, 5+10 buttons, speaker built-on, digital communication, 24/48 V DC, ALU  
MA20 Emergency gooseneck microphone, 5+20 buttons, speaker built-on, digital communication, 24/48 V DC, ALU  
MA30 Emergency gooseneck microphone, 5+30 buttons, speaker built-on, digital communication, 24/48 V DC, ALU  
MA40 Emergency gooseneck microphone, 5+40 buttons, speaker built-on, digital communication, 24/48 V DC, ALU

MAR10 Emergency hand-held PTT microphone, 5+10 buttons, speaker built-on, digital communication, 24/48 V DC, wall installation  
MAR20 Emergency hand-held PTT microphone, 5+20 buttons, speaker built-on, digital communication, 24/48 V DC, wall installation  
MAR30 Emergency hand-held PTT microphone, 5+30 buttons, speaker built-on, digital communication, 24/48 V DC, wall installation  
MAR40 Emergency hand-held PTT microphone, 5+40 buttons, speaker built-on, digital communication, 24/48 V DC, wall installation

MAR10K MAR10 emergency microphone in metal housing, IP30  
MAR20K MAR20 emergency microphone in metal housing, IP30  
MAR30K MAR30 emergency microphone in metal housing, IP30  
MAR40K MAR40 emergency microphone in metal housing, IP30

MAR10KR MAR10 emergency microphone, metal housing, IP30, redundant fiber digital communication, 24 V DC/7 Ah power supply  
MAR20KR MAR20 emergency microphone, metal housing, IP30, redundant fiber digital communication, 24 V DC/7 Ah power supply

MI10 Paging gooseneck microphone console, 5+10 buttons, speaker built-on, digital communication, 24/48 V DC  
MI20 Paging gooseneck microphone console, 5+20 buttons, speaker built-on, digital communication, 24/48 V DC  
MI30 Paging gooseneck microphone console, 5+30 buttons, speaker built-on, digital communication, 24/48 V DC  
MI40 Paging gooseneck microphone console, 5+40 buttons, speaker built-on, digital communication, 24/48 V DC

## Fire intercoms

INT2P Fire intercom, in-wall installation, 2 backlit buttons, digital communication, 24/48 V DC  
INT2N Fire intercom, wall installation, 2 backlit buttons, digital communication, 24/48 V DC

## Accessories

PP Cable connection ABS box unit for microphones consoles connection  
MPT Background noise microphone for automatic gain control, ABS  
KSSO24 Network or emergency redundant microphone fiber optic module, ring connection, max distance 20 km, 24 V DC, DIN (TS35)