

6 Watts flush mounted loudspeaker

**APPLICATION**

- Public Address and Voice Alarm
- Outdoor application
- Background Music

**AREA OF USE**

- Health • Education • Retail • Hospitality
- Stadiums • Transportation • Theme parks • Military



**EN 54 24**

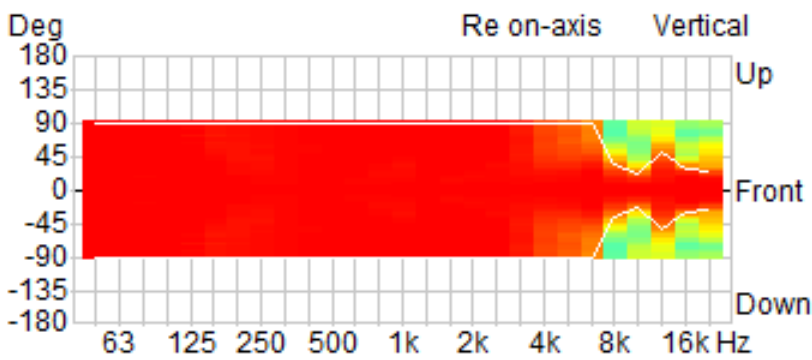
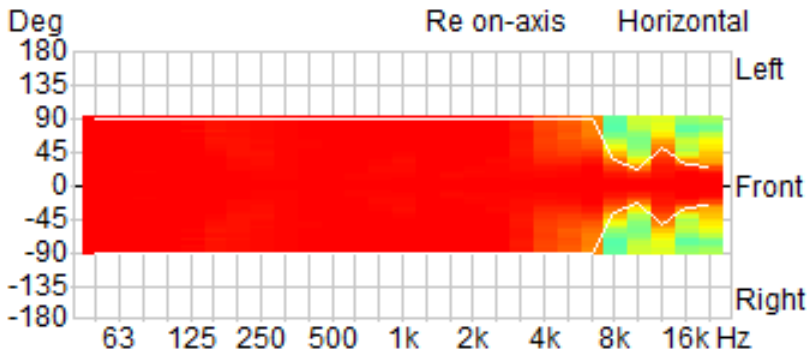
- ABS housing
- Superb sound
- coverage Small Design

**OVERVIEW**

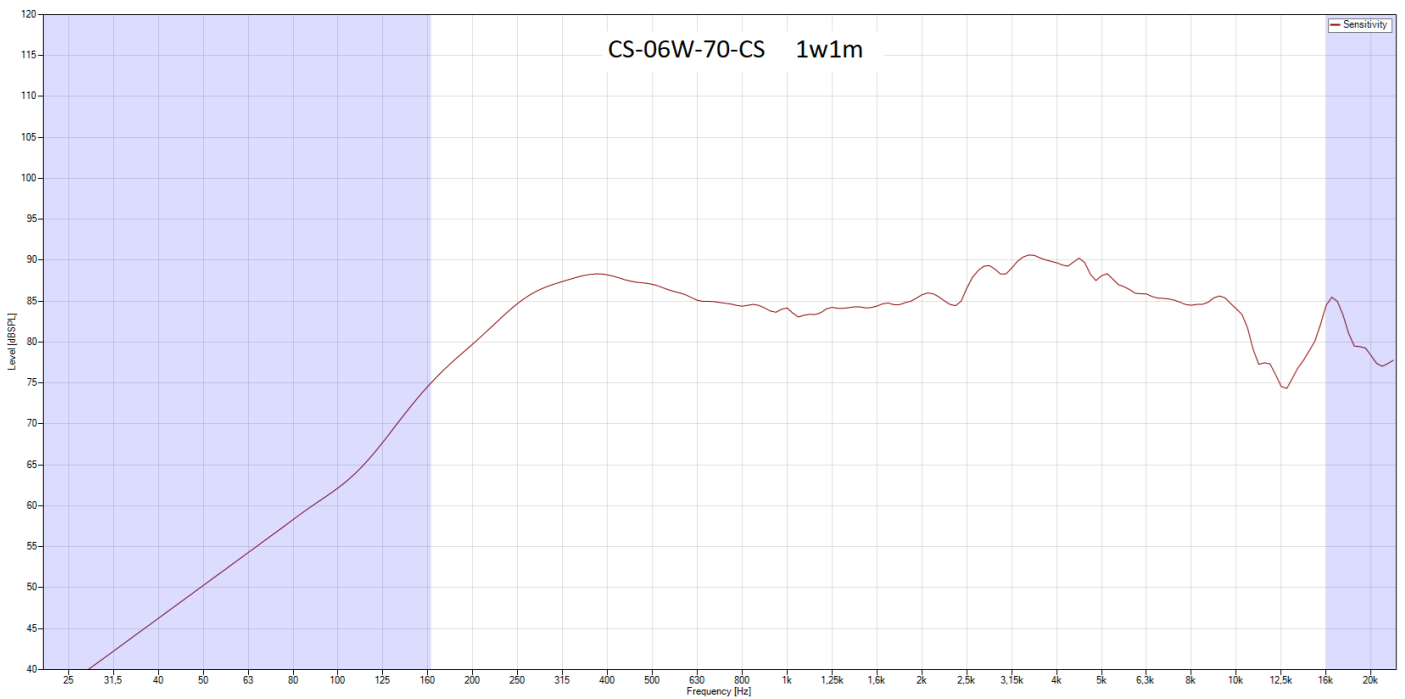
The 6W powered speaker is equipped with a 100V transformer with 3 power adjustments. The speaker is made of a flush-mounted ABS housing and features mounting through a ball stud for angle joints. Connection via 5,5 m cable with junction box.

The speaker is also secured with the protection class IP 21C against the security risks of environmental influences.

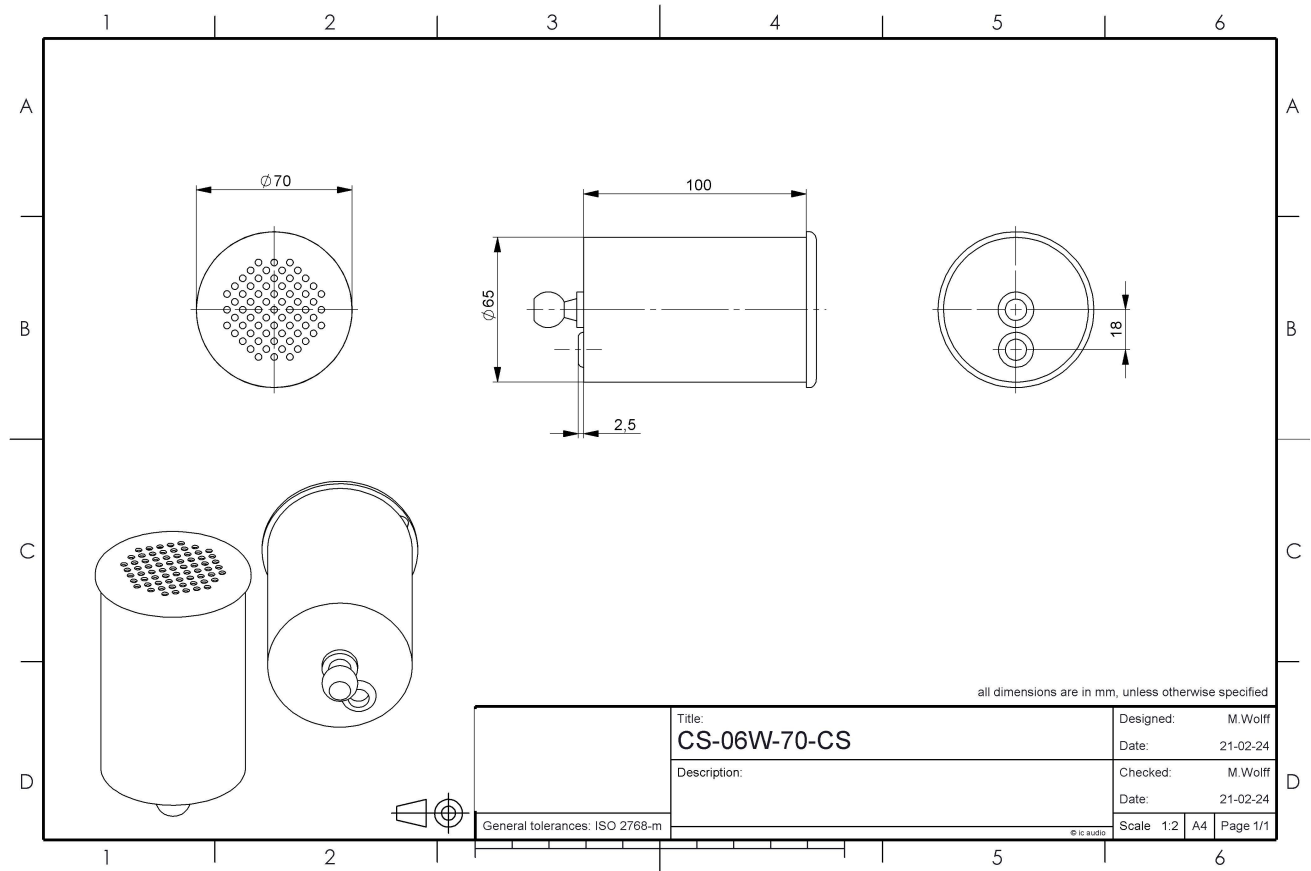
**POLAR DIAGRAMS**



**FREQUENCY RESPONSE DIAGRAMS**



**TECHNICAL DIAGRAMS**



## TECHNICAL DATA (ELECTRICAL)

Description	CS-06W-70-CS
Power	6/3/1,5 W
Impedance (100V)	1667 / 3333 / 6667 ohm
Frequency Range	200 ~ 20.500 Hz
Frequency Response	160 ~ 24.000 Hz
Sensitivity, IEC268-5, 1W/1m	85.6 dB
Sensitivity EN54-24, Pmax/4m	77.5 dB
Sensitivity EN54-24, 1W/4m	70 dB
Dispersion -6dB, 500Hz	h=180° v=180°
Dispersion -6dB, 1KHz	h=180° v=180°
Dispersion -6dB, 2KHz	h=180° v=180°
Dispersion -6dB, 4KHz	h=180° v=180°

## TECHNICAL DATA (MECHANICAL)

Dimensions	104x70 mm
IP Rating	IP21
Weight (net)	0,8kg
Temperature range	-10 / +55 C°
Connector	4-pin ceramic screw terminal
Mounting	Ball stud for angle joints
Connector	2-pin ceramic block
Type	A
Colour	white

### All rights reserved.

The information contained in this document is believed to be accurate; however, no representation or warranty is given, and pAudio Technologies assumes no liability regarding its accuracy or completeness.