

6 Watts Ceiling Loudspeaker

APPLICATION

- Public Address and Voice Alarm
- Outdoor application
- Background Music

AREA OF USE

- Health • Education • Retail • Hospitality
- Stadiums • Transportation • Theme parks • Military



EN 54 24

- High sound pressure level
- low mounting depth
- antistatic plastic contact protection



OVERVIEW

The 6W powered speaker is equipped with a 130mm full-range loudspeaker and a 100V transformer with 3 power adjustments. The powder-coated metal version in RAL 9016 guarantees lasting stability. Thanks to an innovative airflow system, the CSFD-P-06W-130 provides sound characteristics which are attributed to a conventional bass speaker. An extremely flat construction method allows a low mounting depth of only 70mm, with less than 1 kg product weight. For additional reliability, the speaker is impregnated against wetness.

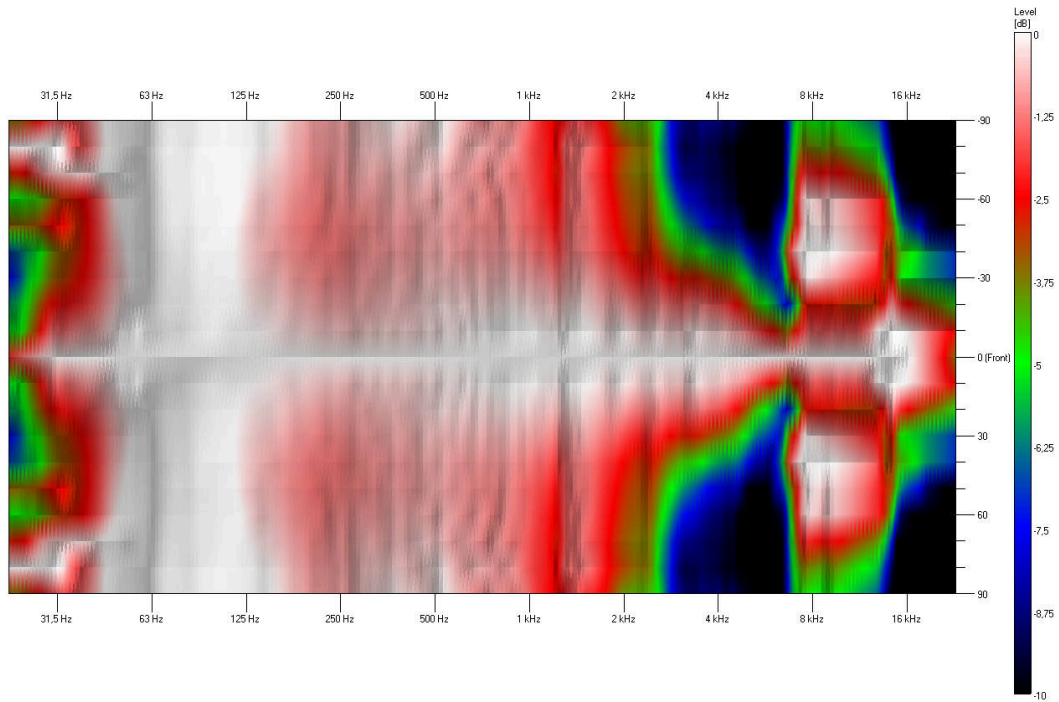
The speaker is also secured with protection class IP 21C against the security risks of environmental influences. Quick and easy mounting with spring clamps and short tension distance. Perfectly suitable for installations where the installation depth is very limited.

Special paint of the speaker in 4-digit RAL- or NCS- colour is available at extra cost.

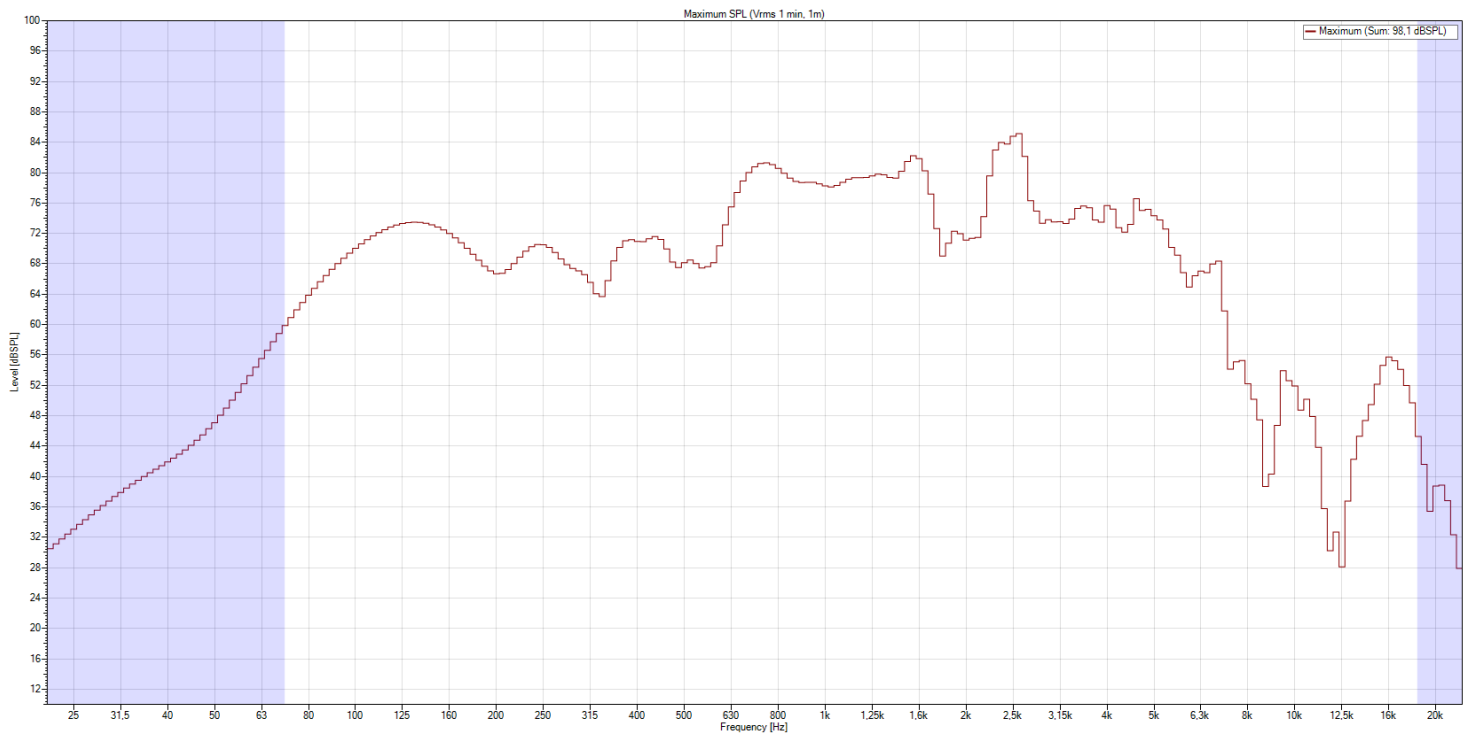
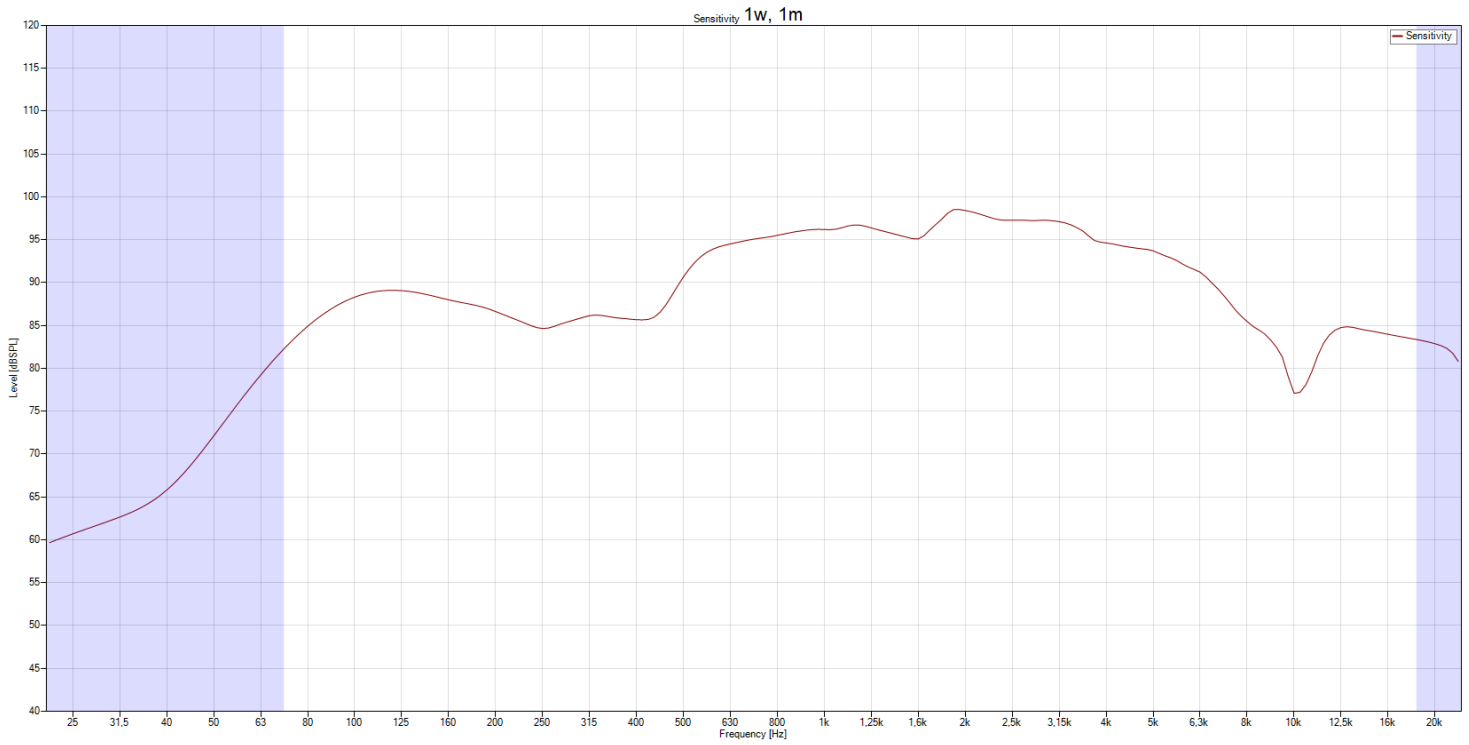
The innovative PET-plastic contact protection is included in the delivery and protected by a European patent (publication no. 2768238).

This speaker is suitable for a ceiling strength of about 3-45 mm. Our specification is primarily related to solid ceilings, for ceilings with soft materials higher ceiling thicknesses could be necessary. In addition, stronger cables and other fittings may also result in changes in the appropriate setup. With regard to the variety of materials and manufacturers, we recommend building a sample of the speaker to match the requirements accurately.

ISOBAR DIAGRAMS

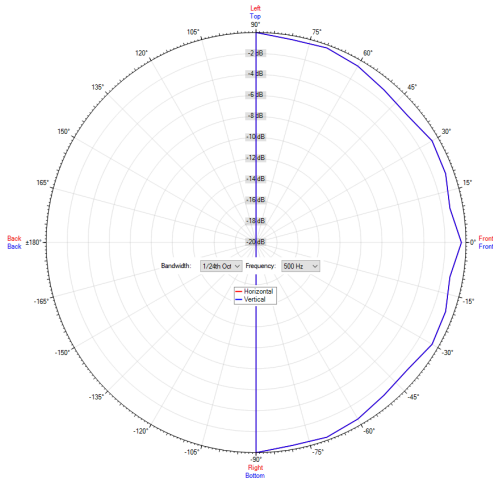


FREQUENCY RESPONSE DIAGRAMS

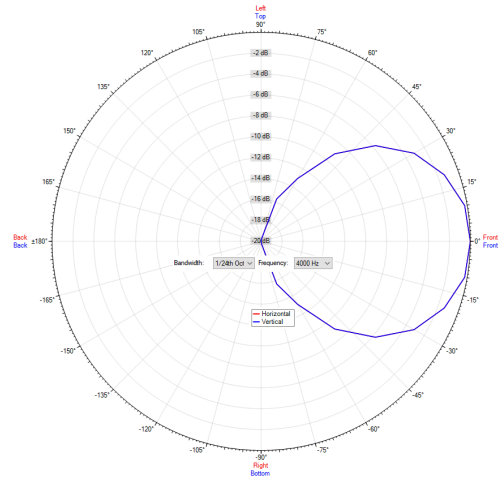


POLAR DIAGRAMS

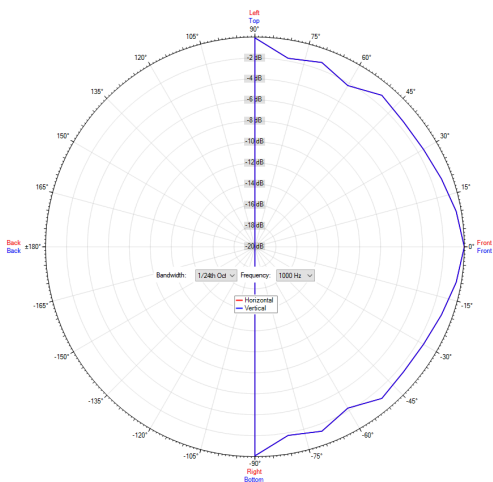
Polar Diagram 500Hz



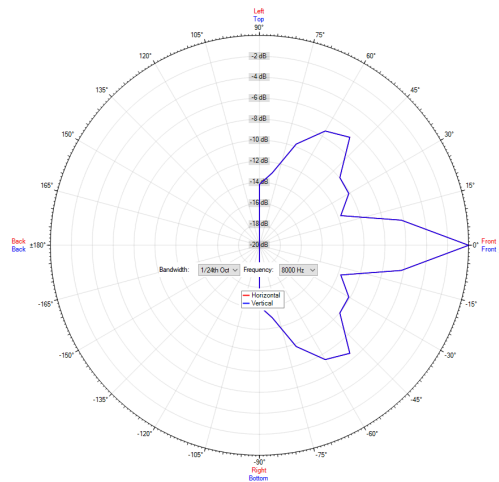
Polar Diagram 4000Hz



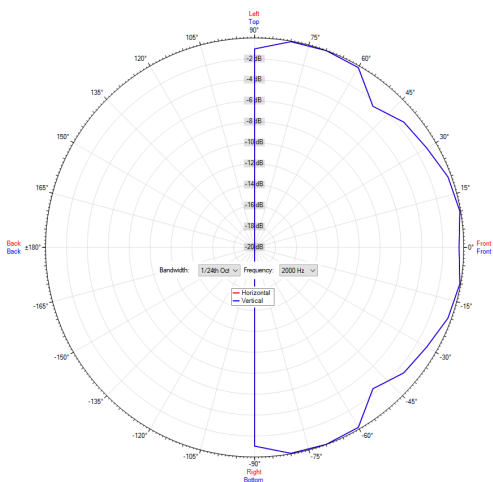
Polar Diagram 1000Hz



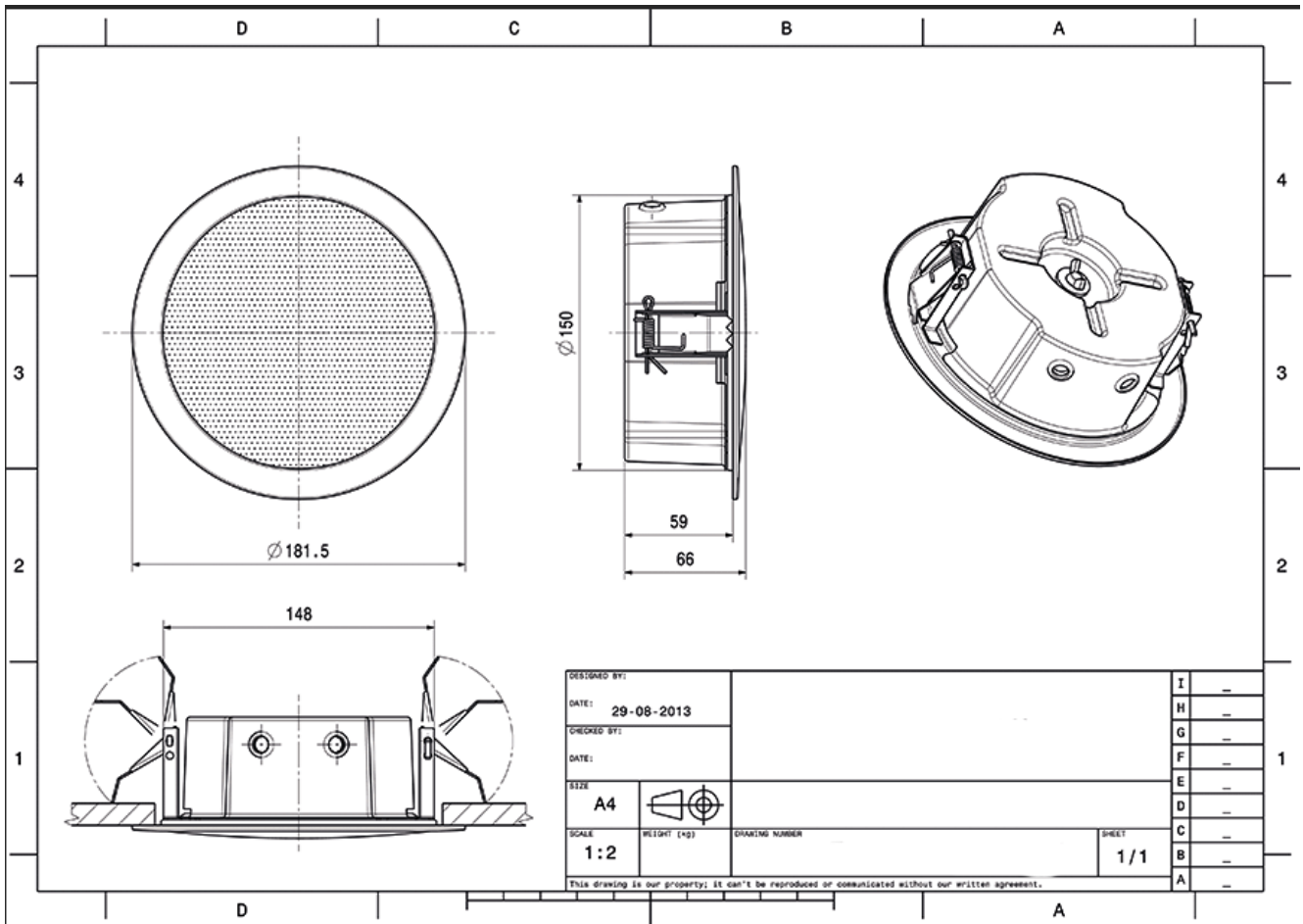
Polar Diagram 8000Hz



Polar Diagram 2000Hz



TECHNICAL DIAGRAMS



TECHNICAL DATA (ELECTRICAL)

| | |
|----------------------------|-----------------------------------|
| Description | CSFD-P-06W-130 |
| Power | 6/3/1,5 W |
| Impedance (100V) | 1667/3333/6667 ohm |
| Frequency Range | 104 - 17.200 Hz |
| Frequency Response | 57 - 24.000 Hz |
| SPL IEC268-5, 1W/1m | 87,0 dB (plastic) 86,0 dB (metal) |
| SPL EN54-24, Pmax/4m | 85,0 dB |
| Sensitivity EN54-24, 1W/4m | 74,8 dB (plastic) 74,2 dB (metal) |
| Sensitivity EN54-24, 1W/1m | 86,8 dB |
| Dispersion -6dB, 500Hz | plastic/metal 180° |
| Dispersion -6dB, 1KHz | plastic/metal 180° |
| Dispersion -6dB, 2KHz | plastic/metal 140° |
| Dispersion -6dB, 4KHz | plastic/metal 85°/84° |

TECHNICAL DATA (MECHANICAL)

| | |
|-------------------|--|
| Dimensions | 186x65 mm (plastic) 181,5x80 mm (metal) |
| IP Rating | IP21 |
| Weight (net) | 0,54 kg (plastic) 0,71 kg (metal) |
| Ceiling Cut-out | 156 mm |
| Temperature Range | -10 / +55 C° |
| Mounting | spring clamp |
| Connector | 4-pin screw terminal |
| Terminal Diameter | 2,5 mm |
| Colour | RAL 9016 |

All rights reserved.

The information contained in this document is believed to be accurate; however, no representation or warranty is given, and pAudio Technologies assumes no liability regarding its accuracy or completeness.