

ETSS-100W-ABS

100W Boundary Horn Speaker

APPLICATION

- Public Address and Voice Alarm
- Outdoor application
- Background Music

AREA OF USE

- Health • Education • Retail • Hospitality
- Stadiums • Transportation • Theme parks • Military



EN 54 24

- high sound pressure level
- weather proof
- stainless steel mounting

OVERVIEW

The boundary horn speaker has been developed for areas with extremely high ambient noise and is suitable for indoor and outdoor applications, such as tunnels. It is built to withstand corrosive atmospheric contaminants, high moisture levels and temperature extremes. The horn provides an enormous sound pressure level, a balanced frequency response, and a very low distortion.

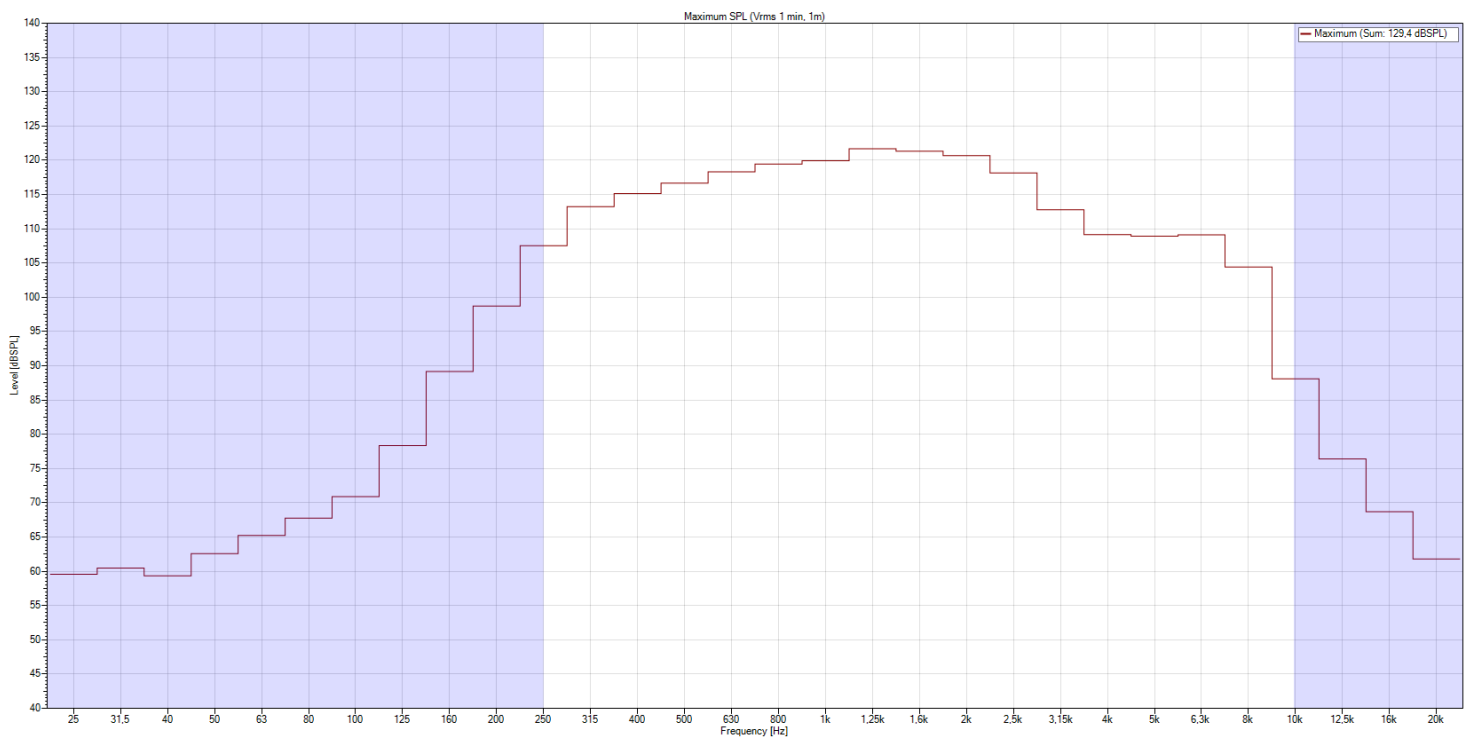
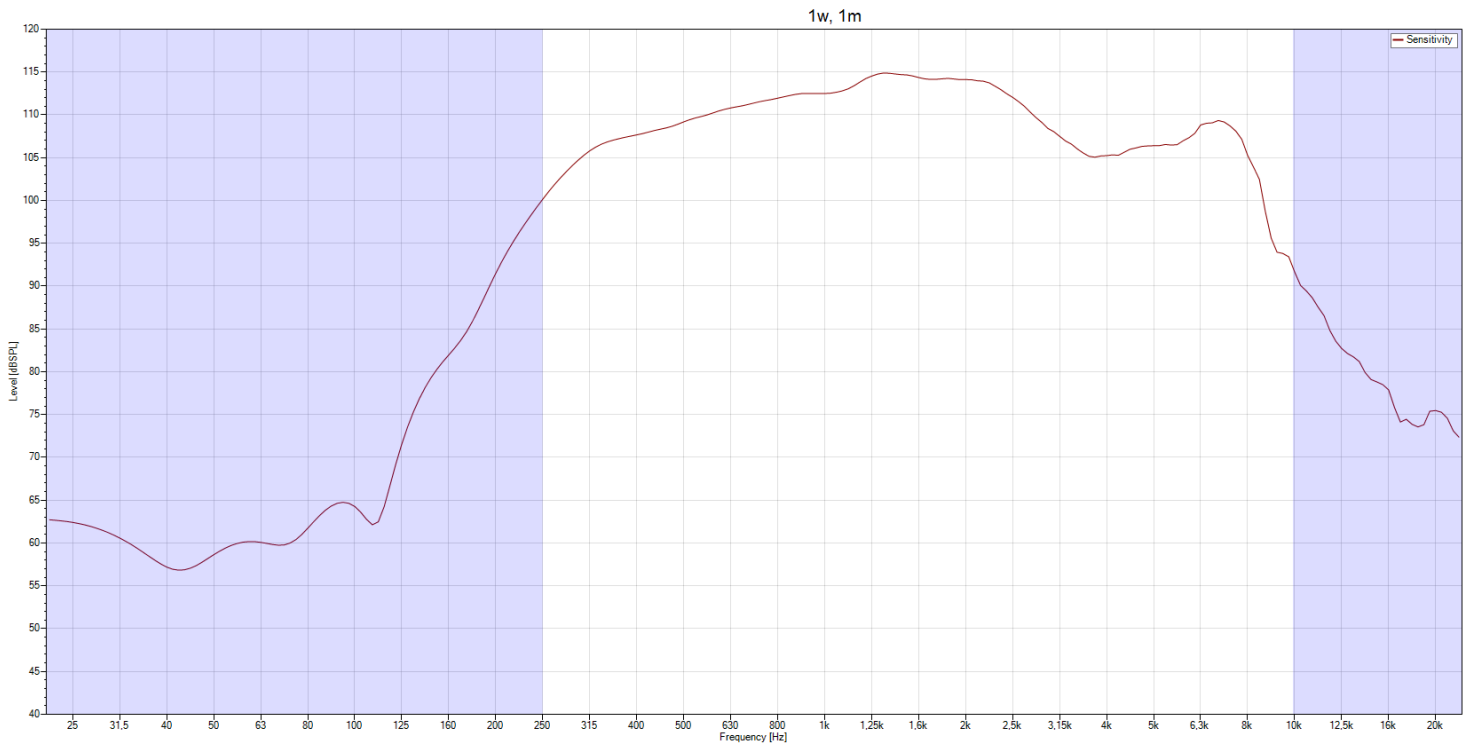
The ETSS-100W-ABS is made with a flame-retardant plastic housing (UL 94 V-0) in black and IP 65 protection is also equipped with a ceramic block and thermal fuse. The high-quality 100W horn driver offers a high-performance CCAR voice coil. A simple and stable cable gland is made possible by 2 x PG13.5..

Sturdy installation by rust-free V5A stainless steel brackets and screws (1.4401 according to ISO 3506 / EN 10088-3; AISI 316).

There are two mounting solutions to choose from: the standard mount with 4 individual mounting brackets and the premium mount, which allows the horn to be mounted by only one person. The brackets are not included in the delivery.

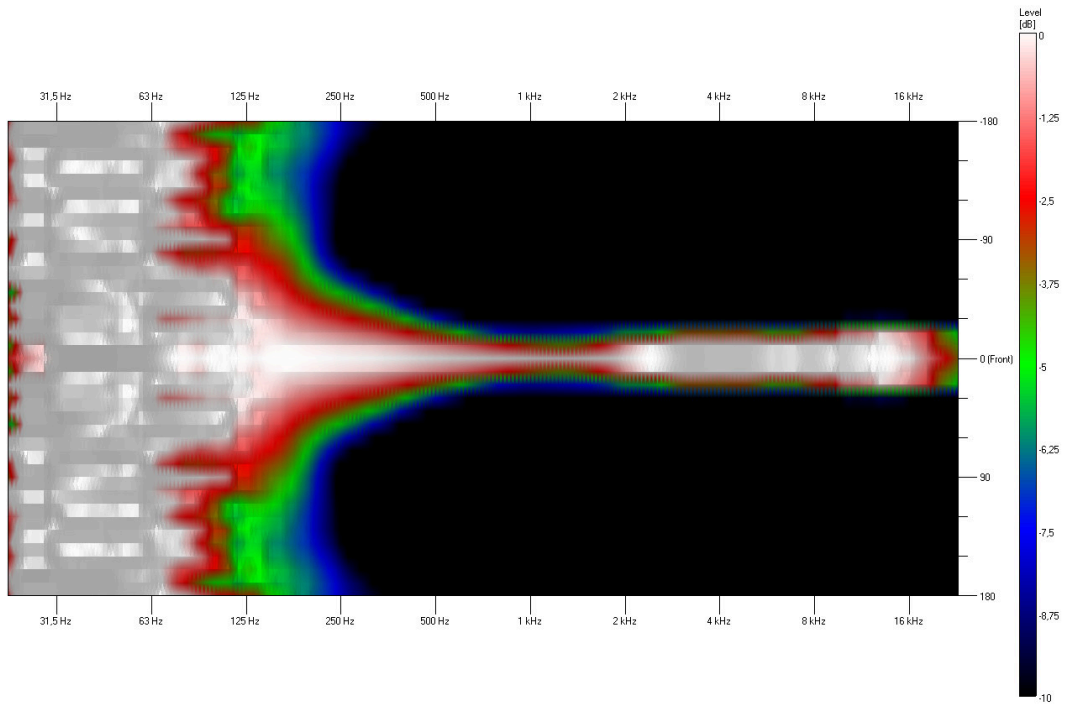
This horn speaker provides intelligible voice notifications over a great distance, resulting in a lower number of required loudspeakers. The product is a certified voice alarm speaker according to EN54-24 and there is no other equalizer needed to meet the frequency response requirements according to EN54-24.

FREQUENCY RESPONSE DIAGRAMS

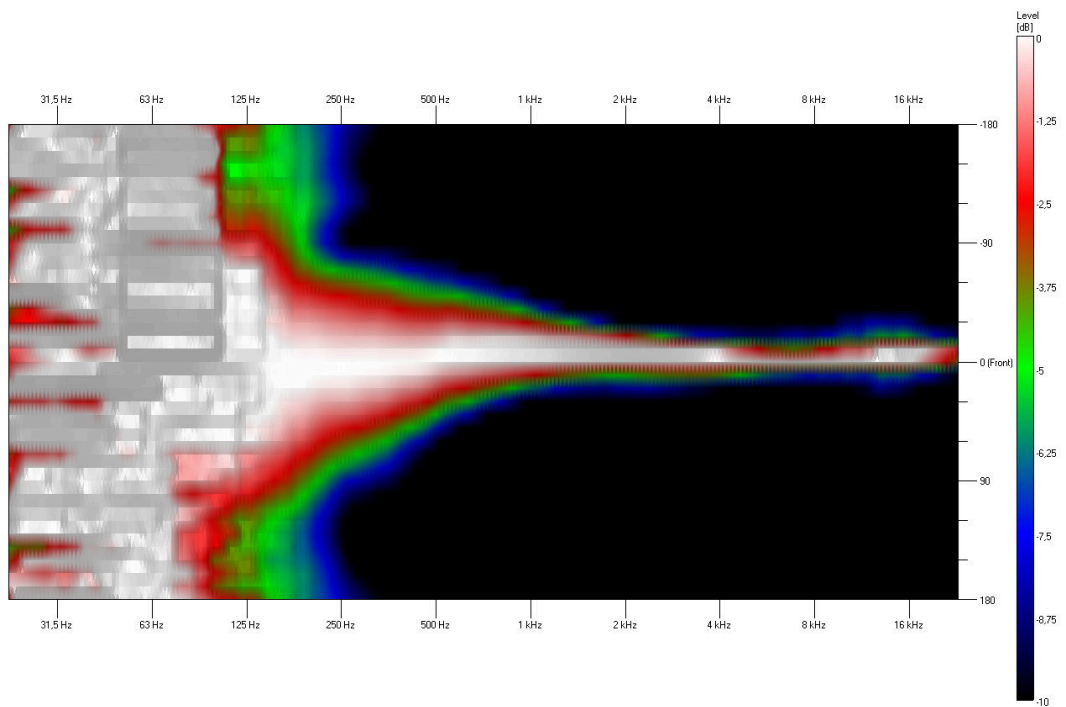


ISOBAR

Horizontal

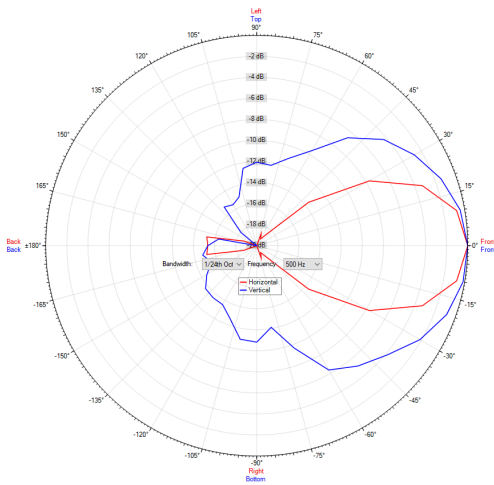


Vertical

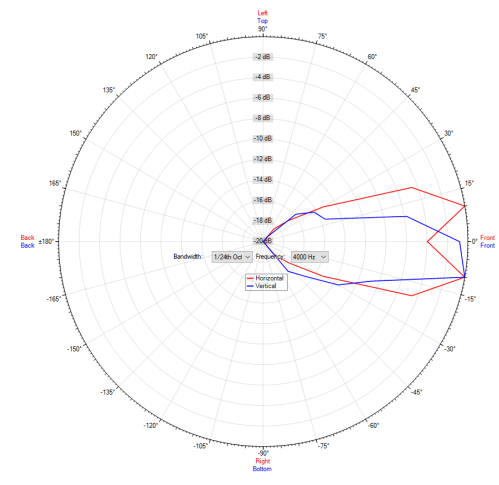


POLAR DIAGRAM

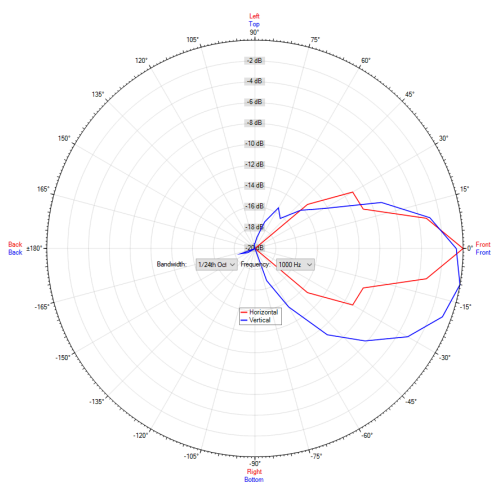
Polar Diagram 500Hz



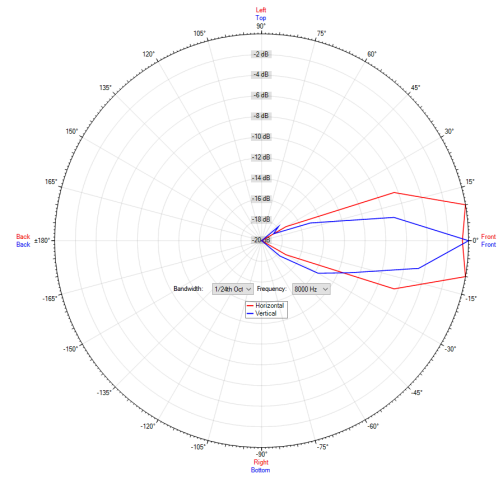
Polar Diagram 4000Hz



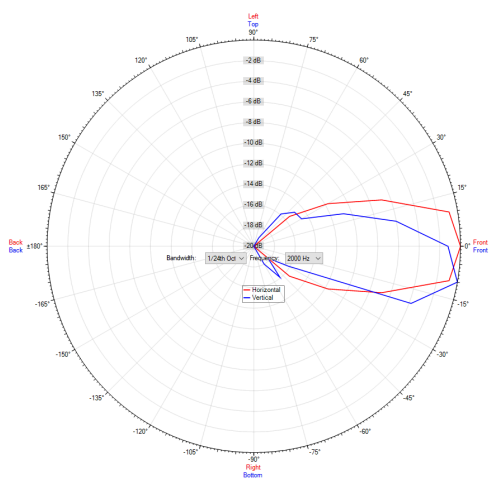
Polar Diagram 1000Hz



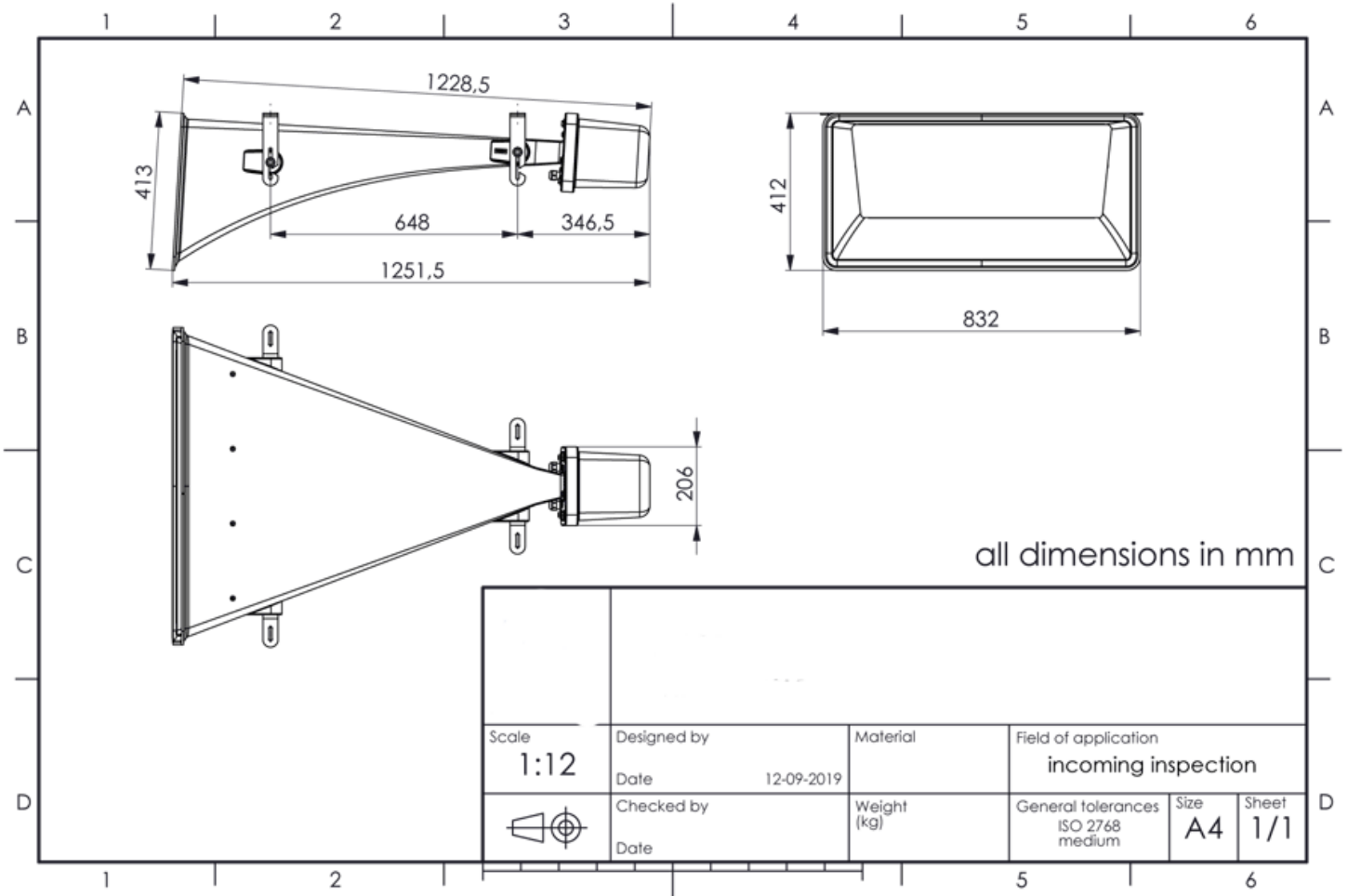
Polar Diagram 8000Hz



Polar Diagram 2000Hz



TECHNICAL DIAGRAMS



TECHNICAL DATA (ELECTRICAL)

Description	ETSS-100W-ABS
Power	100/50/25W
Impedance (100V)	100/200/400 ohm
Frequency Range	280 - 9.000 Hz
Frequency Response	250 - 10.000 Hz
SPL IEC268-5, 1W/1m	113 dB
SPL EN54-24, Pmax/4m	119 dB
Sensitivity EN54-24, 1W/4m	101 dB
Sensitivity EN54-24, 1W/1m	113.9 dB
Dispersion -6dB, 500Hz	h 58° / v 35°
Dispersion -6dB, 1KHz	h 35° / v 25°
Dispersion -6dB, 2KHz	h 40° / v 20°
Dispersion -6dB, 4KHz	h 54° / v 15°

TECHNICAL DATA (MECHANICAL)

Dimensions	1228 x 832 x 413 mm
IP Rating	IP65
Weight (net)	16,0 kg
Temperature range	-25 / +70 °C
Mounting	V5A mounting brackets
Connector	4-pin screw terminal
Terminal Diameter	3,2 mm ²
Maximum Cable Passage	8 mm ²
Colour	black

All rights reserved.

The information contained in this document is believed to be accurate; however, no representation or warranty is given, and pAudio Technologies assumes no liability regarding its accuracy or completeness.