

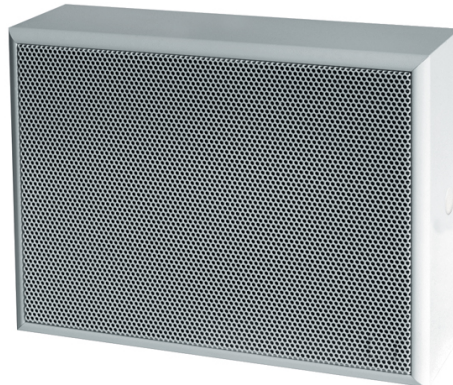
6 Watts Cabinet / Wall Mount Loudspeaker

APPLICATION

- Public Address and Voice Alarm
- Outdoor application
- Background Music

AREA OF USE

- Health • Education • Retail • Hospitality
- Stadiums • Transportation • Theme parks • Military



EN 54 24

- Quick mounting
- Highest reliability
- BS 5839

OVERVIEW

The FMS-AB-06W-100 is designed with two independent speakers and 100V transformers to enable an economic operation of two separated speaker lines (A/B-lines) for highest security demands. In case of a failure of one speaker line the redundancy of the chassis and the transformers will guarantee unimpaired function. The speaker is also compliant with the British Standard BS 5839, Part 8. The 2x6W powered speaker is equipped with two full-range loudspeakers and two 100V transformer with 3 power adjustments, each. The high-density, shock-resistant MDF wood housing in white provides a low resonance sound. A sturdy front grille made of steel guarantees enduring stability.

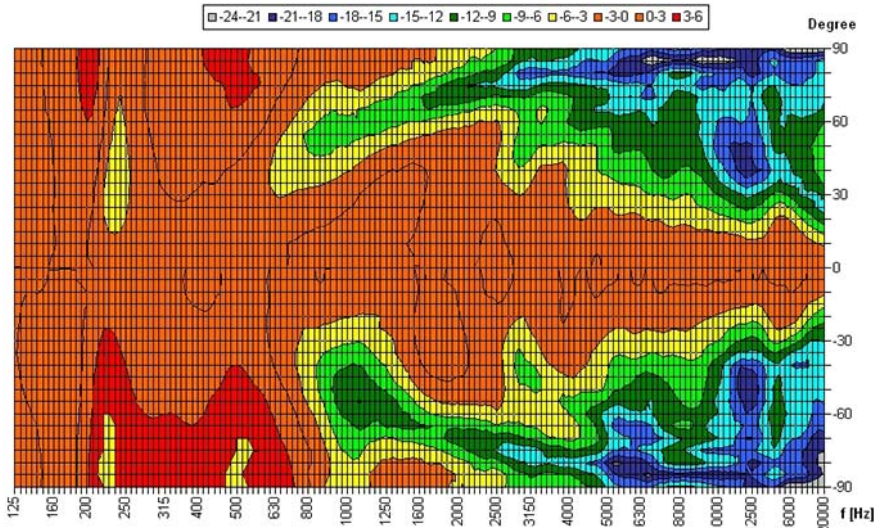
For additional reliability, a 2-pin-ceramic block, thermal fuses are provided and the speaker chassis are impregnated against wetness.

The speaker is also secured with the high protection class IP 54 against the security risks of environmental influences. The reliable spring clamp on the rear plate ensures a quick mounting on walls.

POLAR DIAGRAMS

Copyright by Four-Audio GmbH & Co KG Licensed

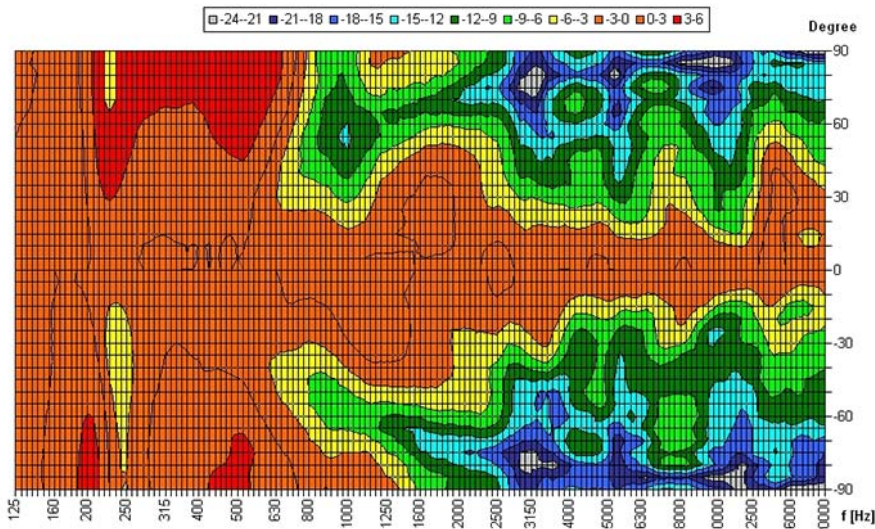
Horizontal Isobars single



Parameters: Cyclic Move: 0° ; Symmetry: no symmetry ; Freq.Smooth: 1/3 Oct ; Ang.Resol.: 5° ; Rel. to: 0° Axis 0°

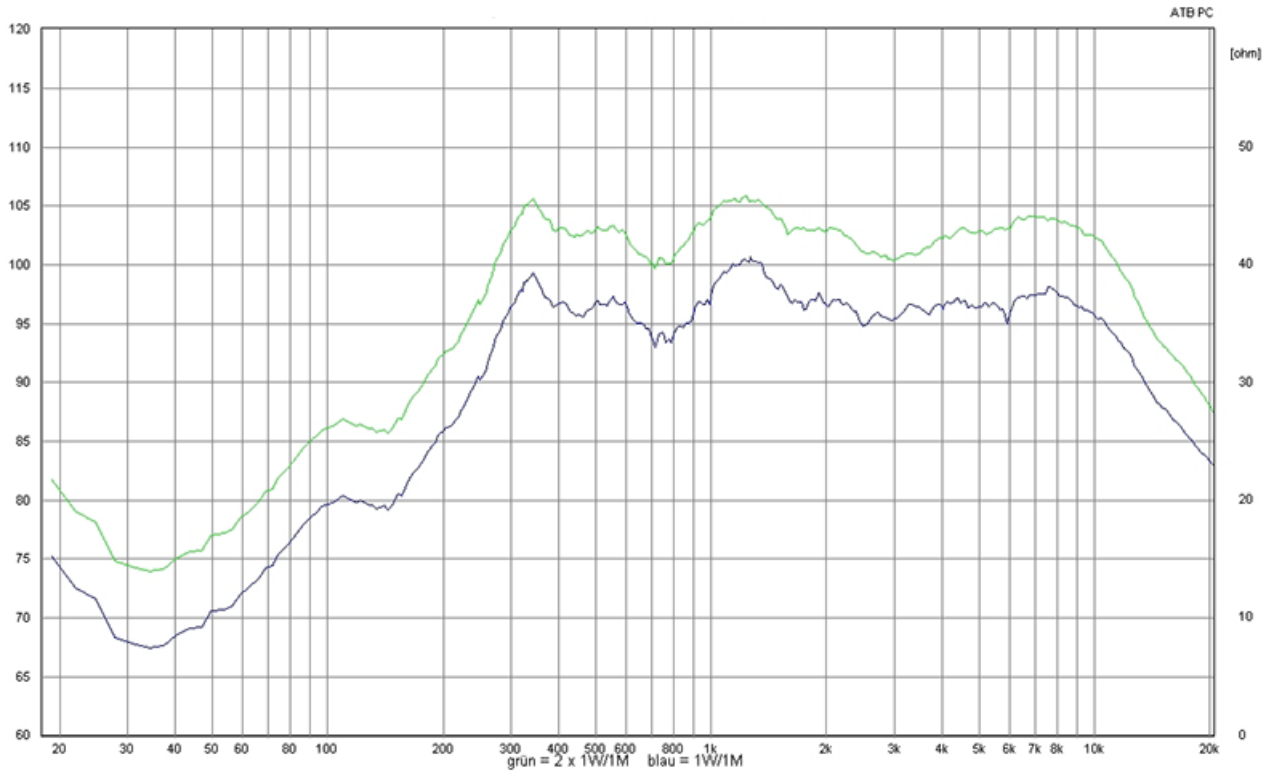
Copyright by Four-Audio GmbH & Co KG Licensed

Vertical Isobars single

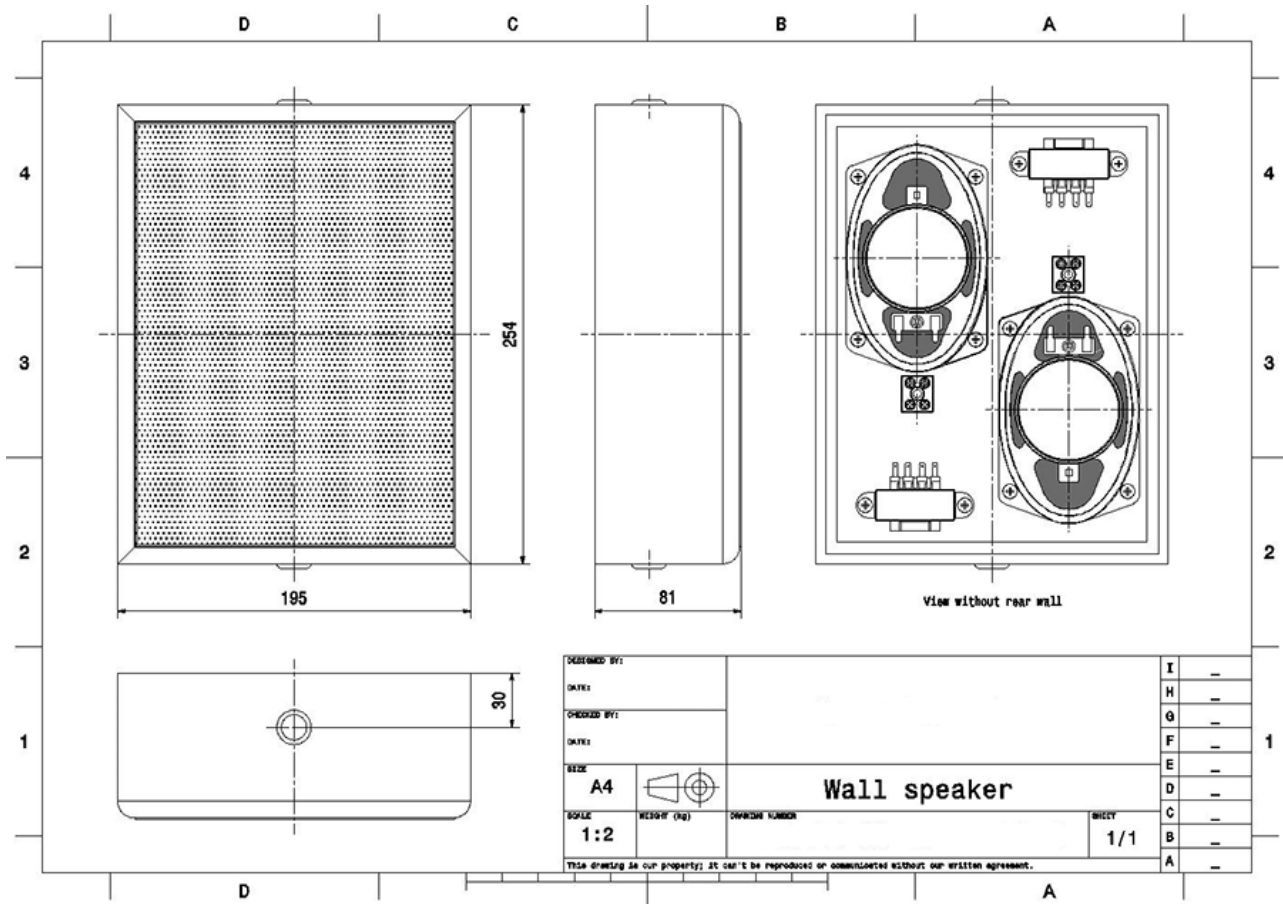


Parameters: Cyclic Move: 0° ; Symmetry: no symmetry ; Freq.Smooth: 1/3 Oct ; Ang.Resol.: 5° ; Rel. to: 0° Axis 0°

FREQUENCY RESPONSE DIAGRAMS



TECHNICAL DIAGRAMS



TECHNICAL DATA (ELECTRICAL)

Description	FMS-AB-06W-100
Power	2x 6/3/1,5 W
Impedance (100V)	1667 / 3333 / 6667 ohm
Frequency Range	227 - 14.600 Hz (single) 224 - 14.300 Hz (double)
Frequency Response	165 - 23.500 Hz (single) 162 - 23.500 Hz (double)
SPL, IEC268-5, 1W/1m	91,0 dB
Sensitivity EN54-24, Pmax/4m	85,0 dB (single) 88,0 dB (double)
Sensitivity EN54-24, 1W/4m	79,6 dB
Sensitivity EN54-24, 1W/1m	91,6 dB
Sensitivity 1W/1m @ 1KHz	98 dB
Dispersion -6dB, 500Hz	single h/v 175° double h/v 180°
Dispersion -6dB, 1KHz	single h/v 180°/160° double h/v 145°/130°
Dispersion -6dB, 2KHz	single h/v 150°/135° double h/v 90°/80°
Dispersion -6dB, 4KHz	single h/v 105°/90° double h/v 50°/40°

TECHNICAL DATA (MECHANICAL)

Dimensions	252x194x82 mm
IP Rating	IP54
Weight (net)	2,24 kg
Temperature range	-10 / +55 C°
Connector	2-pin ceramic block
Mounting	spring clamp
Connector	2-pin ceramic block
Terminal diameter	3,2 mm
Maximum cable cross section	8mm ²
Colour	white

All rights reserved.

The information contained in this document is believed to be accurate; however, no representation or warranty is given, and pAudio Technologies assumes no liability regarding its accuracy or completeness.