

2-Way Coaxial Horn Loudspeaker

APPLICATION

- Public Address and Voice Alarm
- Outdoor application
- Background Music

AREA OF USE

- Health ● Education ● Retail ● Hospitality
- Stadiums ● Transportation ● Theme parks ● Military



EN 54 | 24

- Outdoor application
- Strong beam type sound
- IP 66

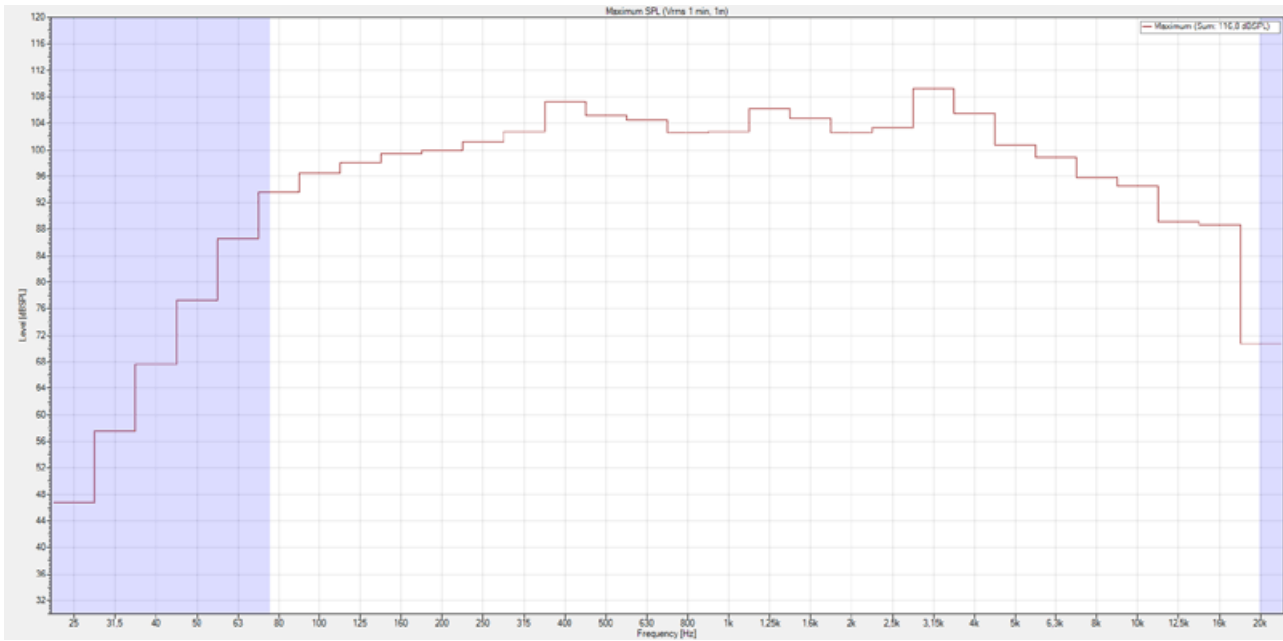
OVERVIEW

The 2-way coaxial horn speaker is engineered for outdoor applications with superb foreground sound and EN54 certification. The PB-3150WA delivers a smooth and powerful beam-type sound for a large range of venues, such as airports, mega-stores, stadiums and many more. The 150W powered professional speaker is equipped with an impressive 2-way bass-reflex system, consisting of an 8" woofer and a high-performance HF-driver with crossover at 2.5kHz.

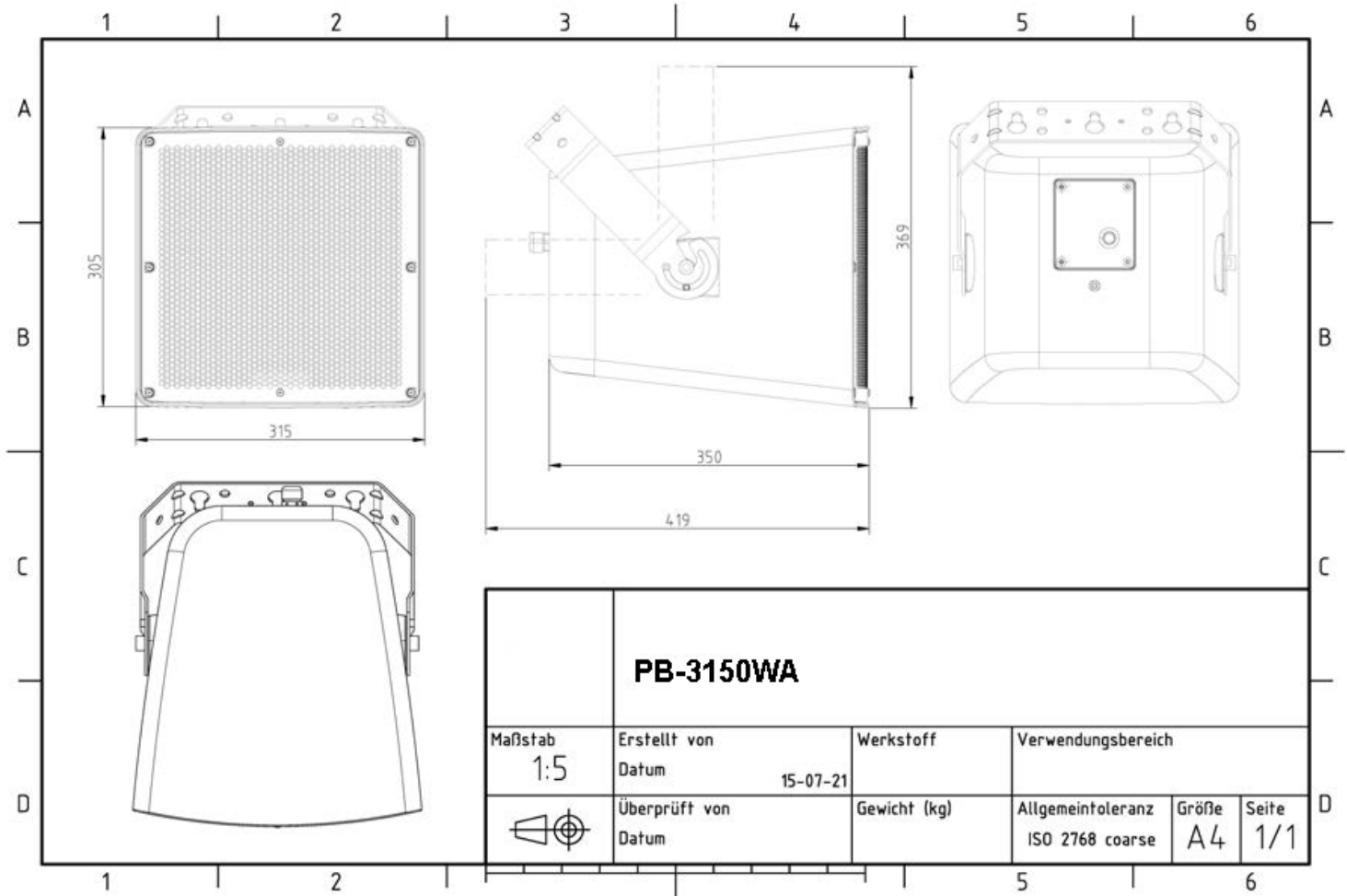
The speaker offers 3 different 100V power tapings, low impedance operation is also possible.

The sturdy high-impact ABS housing in white with a metal hexagon-shaped aluminium grille offers IP66 enclosure protection. Connection is easily done by a screw-terminal at the rear of the speaker, protected by a cover plate with 2 x PG11 cable glands. The metal mounting bracket with adjustable inclination enables simple and safe installation. A safety rope is included in the delivery.

FREQUENCY RESPONSE DIAGRAMS



TECHNICAL DIAGRAMS



TECHNICAL DATA (ELECTRICAL)

Description	PB-3150WA
Power	150/75/38W (8ohm)
Impedance (100V)	67/133/263ohm
Frequency Range	90 - 19.000 Hz
Frequency Response	75 - 20.000 Hz
Sensitivity 1W/1m, peak	104 dB
Sensitivity , 1W/4m, peak	92,0 dB
Sensitivity Pmax/4m, peak	113 dB
Sensitivity , rated noise power / 4m	104,8 dB
Sensitivity EN54-24, 1W/4m	84,7 dB
Sensitivity 1W/1m @ 1KHz	94 dB
Dispersion -6dB, 500Hz	h 170° / v 180°
Dispersion -6dB, 1KHz	h 79° / v 80°
Dispersion -6dB, 2KHz	h 50° / v 62°
Dispersion -6dB, 4KHz	h 85° / v 70°

TECHNICAL DATA (MECHANICAL)

Dimensions	315x305x350 mm
IP Rating	IP66
Weight (net)	11,85 kg
Temperature range	-25 / +70 °C
Mounting	Mounting bracket
Connector	4-pin screw terminal
Maximum cable cross section	4,9 mm ²
Max. cable cross section loop	4,9 mm ²
Colour	white

All rights reserved.

The information contained in this document is believed to be accurate; however, no representation or warranty is given, and pAudio Technologies assumes no liability regarding its accuracy or completeness.