

# PB-3250BA

## 2-Way Coaxial Horn Loudspeaker

### APPLICATION

- Public Address and Voice Alarm
- Outdoor application
- Background Music

### AREA OF USE

- Health • Education • Retail • Hospitality
- Stadiums • Transportation • Theme parks • Military



**EN 54 | 24**

- Outdoor application
- Strong beam type sound
- IP 66

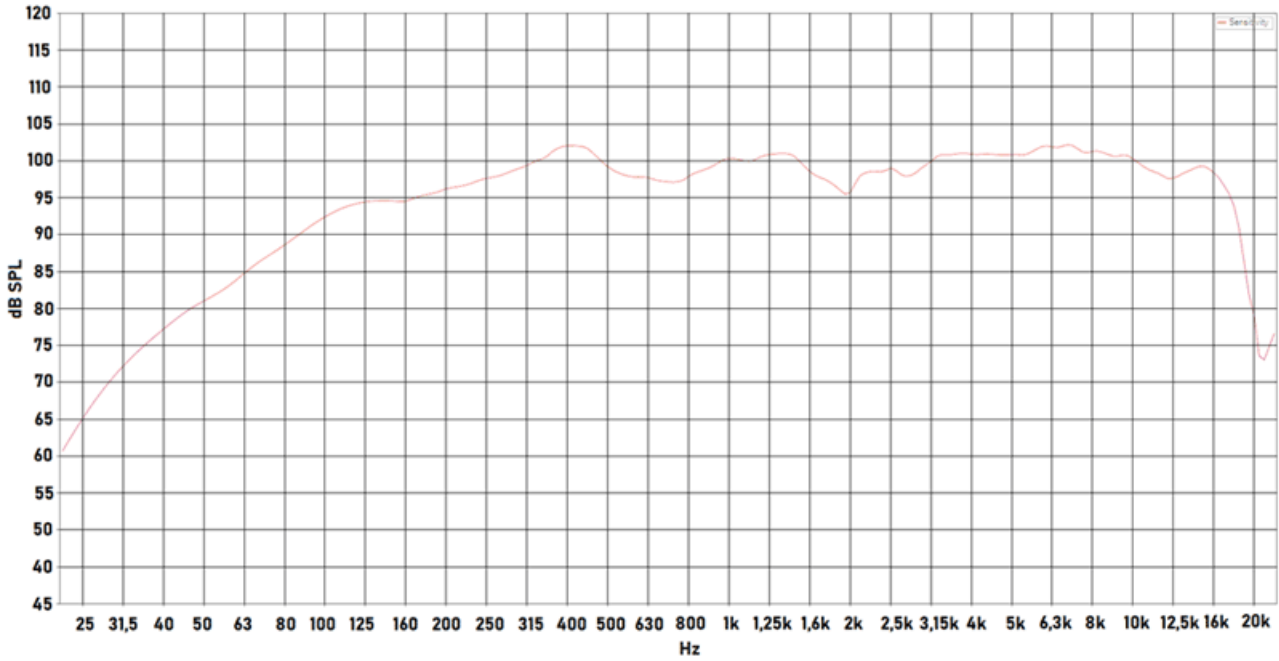
## OVERVIEW

The 2-way coaxial horn speaker is engineered for out-door applications with superb foreground sound and EN54 certification. The PB-3250BA delivers a smooth and powerful beam-type sound for a large range of venues, such as airports, mega-stores, stadiums and many more. The 250W powered professional speaker is equipped with an impressive 2-way bass-reflex system, consisting of an 8" woofer and a high-performance HF-driver with crossover at 2.5kHz.

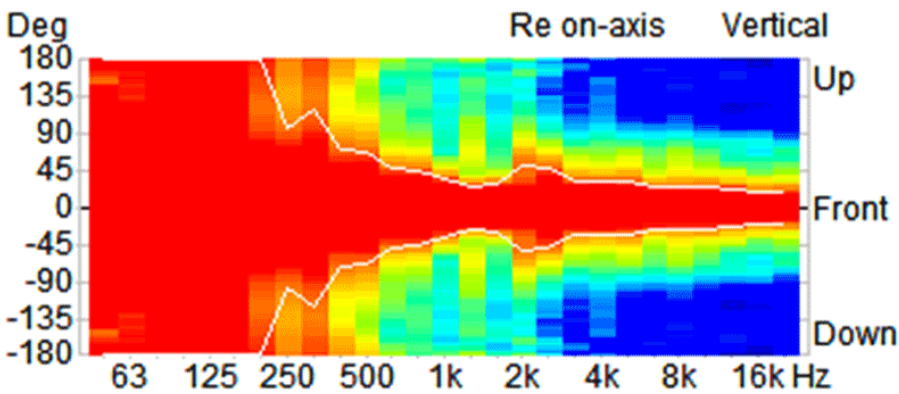
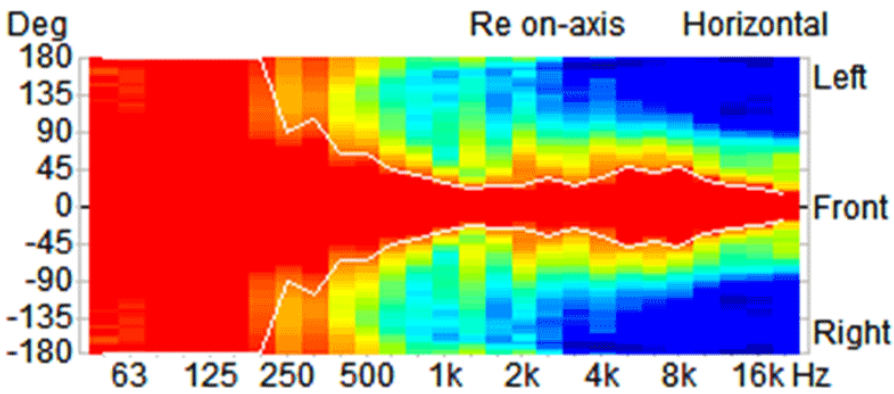
The speaker offers 3 different 100V power tapings, low impedance operation is also possible.

The sturdy high-impact ABS housing in black with a metal hexagon-shaped aluminium grille offers IP66 enclosure protection. Connection is easily done by a screw-terminal at the rear of the speaker, protected by a cover plate with 2 x PG11 cable glands. The metal mounting bracket with adjustable inclination enables simple and safe installation. A safety rope is included in the delivery.

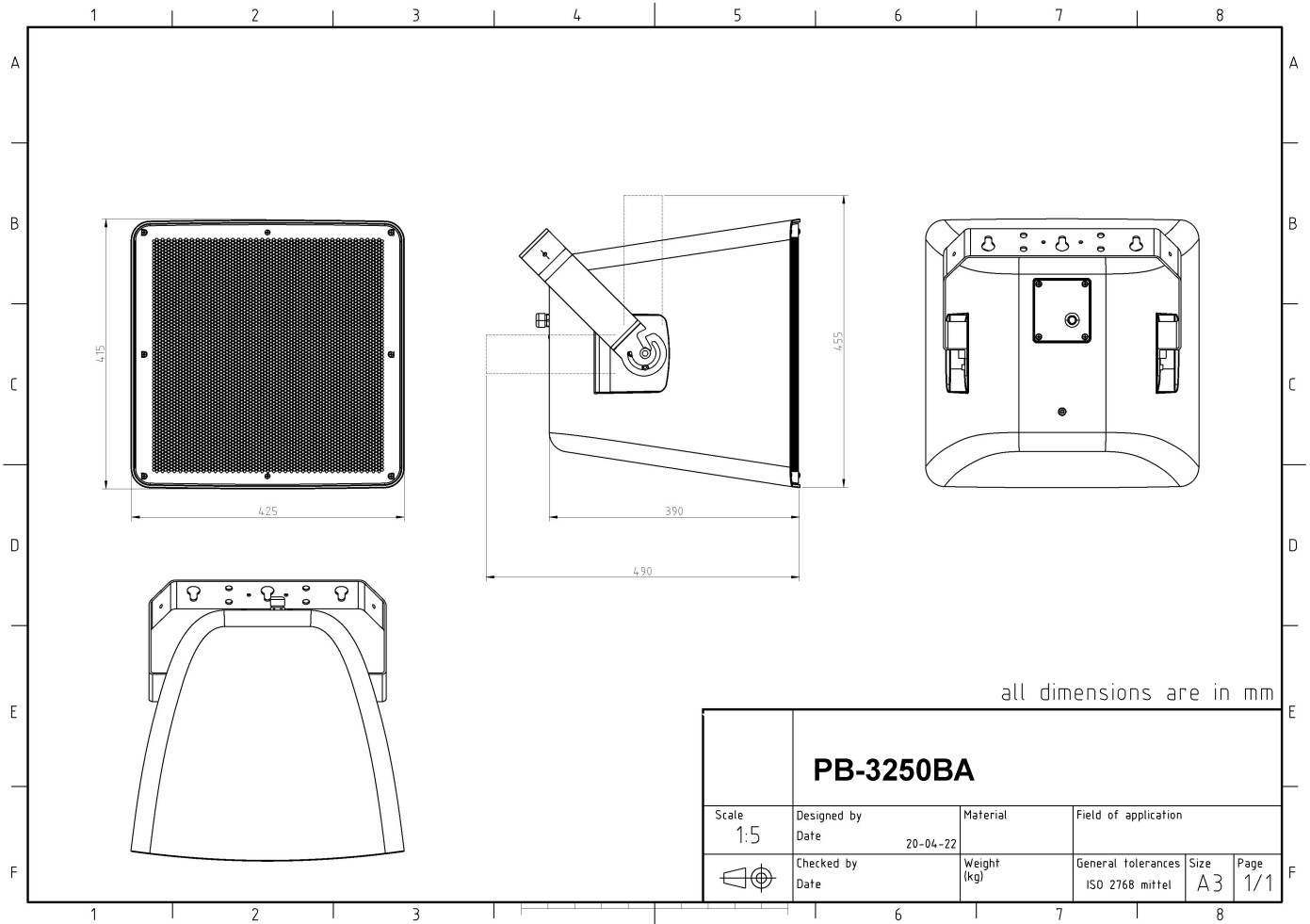
**FREQUENCY RESPONSE DIAGRAMS**



**POLAR DIAGRAMS**



**TECHNICAL DIAGRAMS**



## TECHNICAL DATA (ELECTRICAL)

Description	PB-3250BA
Power	250/125/63W (8ohm)
Impedance (100V)	40/80/158 ohm
Frequency Range	85 - 19.000 Hz
Frequency Response	75 - 20.000 Hz
Sensitivity 1W/1m, peak	103 dB
Sensitivity , 1W/4m, peak	91,0 dB
Sensitivity Pmax/4m, peak	115 dB
Sensitivity , rated noise power / 4m	108 dB
Sensitivity EN54-24, 1W/4m	86,0 dB
Sensitivity 1W/1m @ 1KHz	100 dB
Dispersion -6dB, 500Hz	h 130° / v 135°
Dispersion -6dB, 1KHz	h 60° / v 60°
Dispersion -6dB, 2KHz	h 55° / v 55°
Dispersion -6dB, 4KHz	h 85° / v 60°

## TECHNICAL DATA (MECHANICAL)

Dimensions	390x425x418mm
IP Rating	IP66
Weight (net)	20,85 kg
Temperature range	-25 / +70 °C
Mounting	Mounting bracket
Connector	4-pin screw terminal
Maximum cable cross section	4,9 mm <sup>2</sup>
Max. cable cross section loop	4,9 mm <sup>2</sup>
Colour	black

### All rights reserved.

The information contained in this document is believed to be accurate; however, no representation or warranty is given, and pAudio Technologies assumes no liability regarding its accuracy or completeness.