

20 Watts Projector Loudspeaker

**APPLICATION**

- Public Address and Voice Alarm
- Outdoor application
- Background Music

**AREA OF USE**

- Health • Education • Retail • Hospitality
- Stadiums • Transportation • Theme parks • Military



**EN 54 24**

- superb sound
- high-impact
- ABS plastic BS 5839

**OVERVIEW**

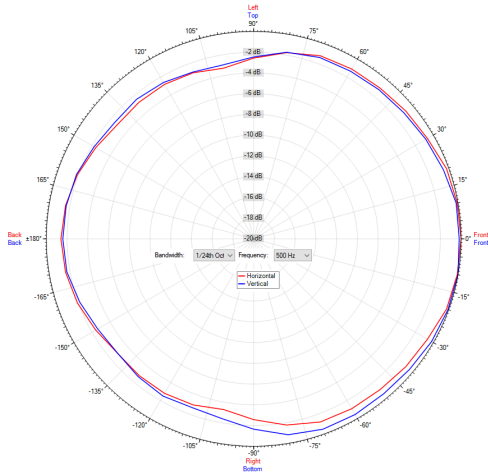
The 20W design speaker with an amazing concave shape is equipped with a 130mm full-range speaker and a 100V transformer with 3 power adjustments. Acoustically the design loudspeaker convinces at all levels. Thanks to a smart phase-shifting and a high-quality mid range resonator, the speaker offers a sound characteristic that is matching a 2-way system. In addition, the very wide dispersion ensures a comprehensive sound.

A robust, ABS plastic housing in RAL9016 and a stable aluminium mounting bracket guarantee a durable installation. The cable is fed via a cable gland (M12), for larger cable sizes the rear cable opening can be used. The integrated 2-pole ceramic block and thermal fuse as well as the moisture impregnation of the loudspeaker ensure additional safety.

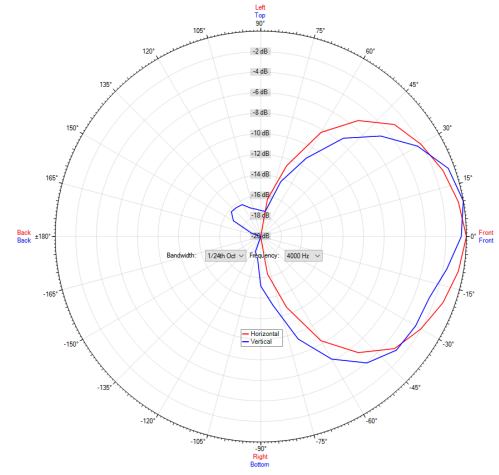
The speaker is compliant with the British Standard BS 5839, Part 8.

## POLAR DIAGRAMS

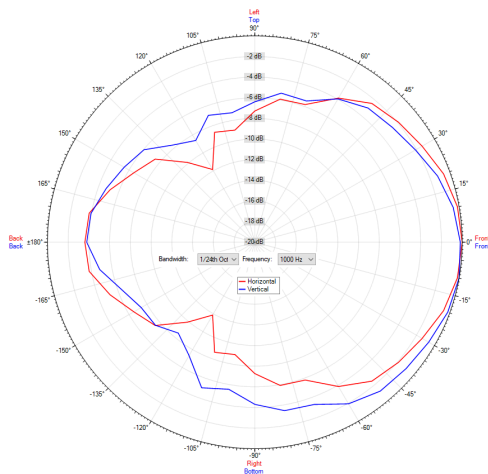
### Polar Diagram 500Hz



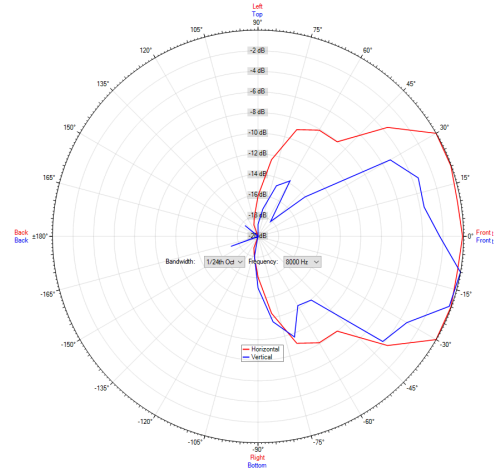
### Polar Diagram 4000Hz



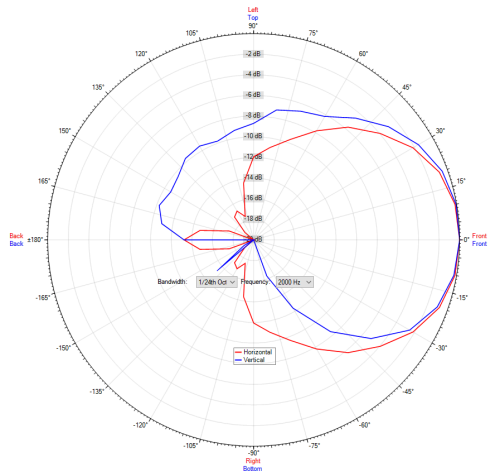
### Polar Diagram 1000Hz



### Polar Diagram 8000Hz

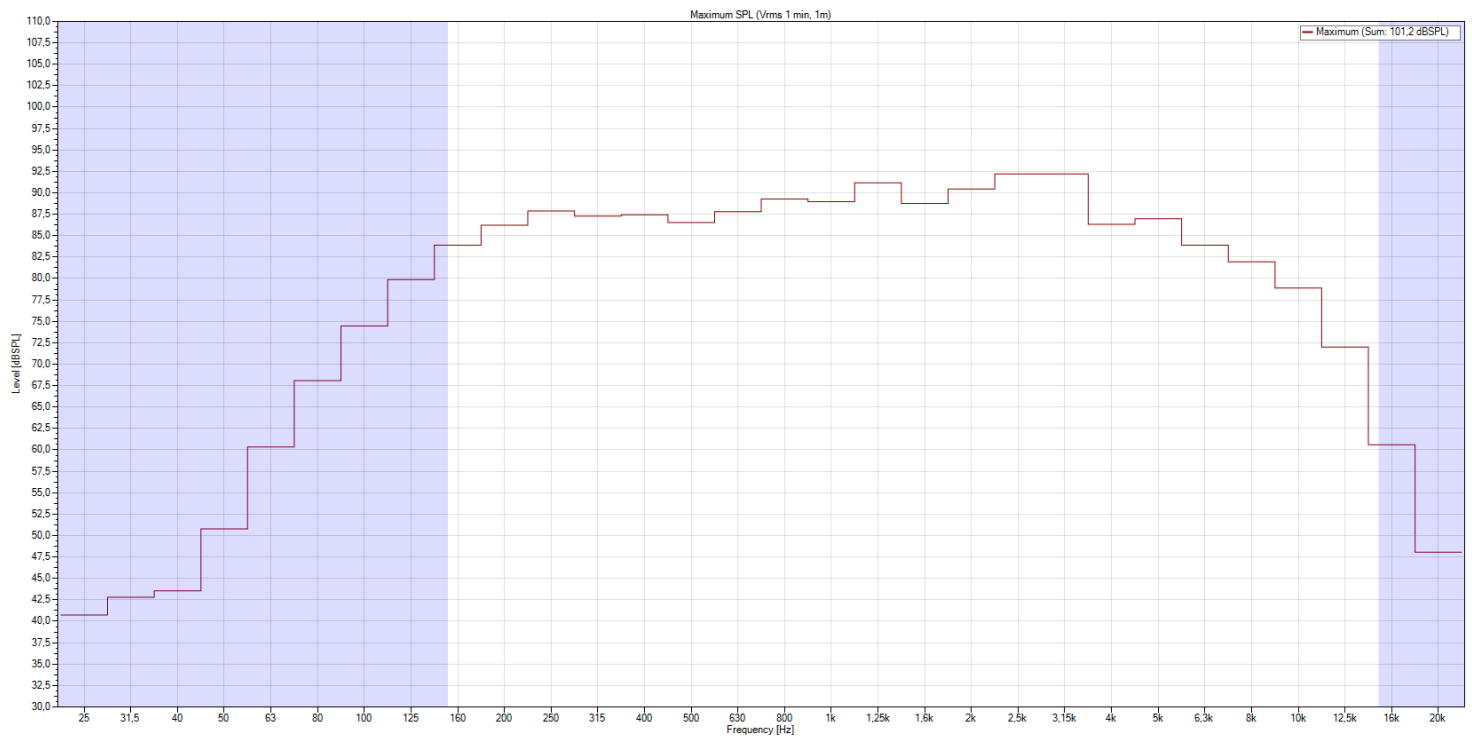
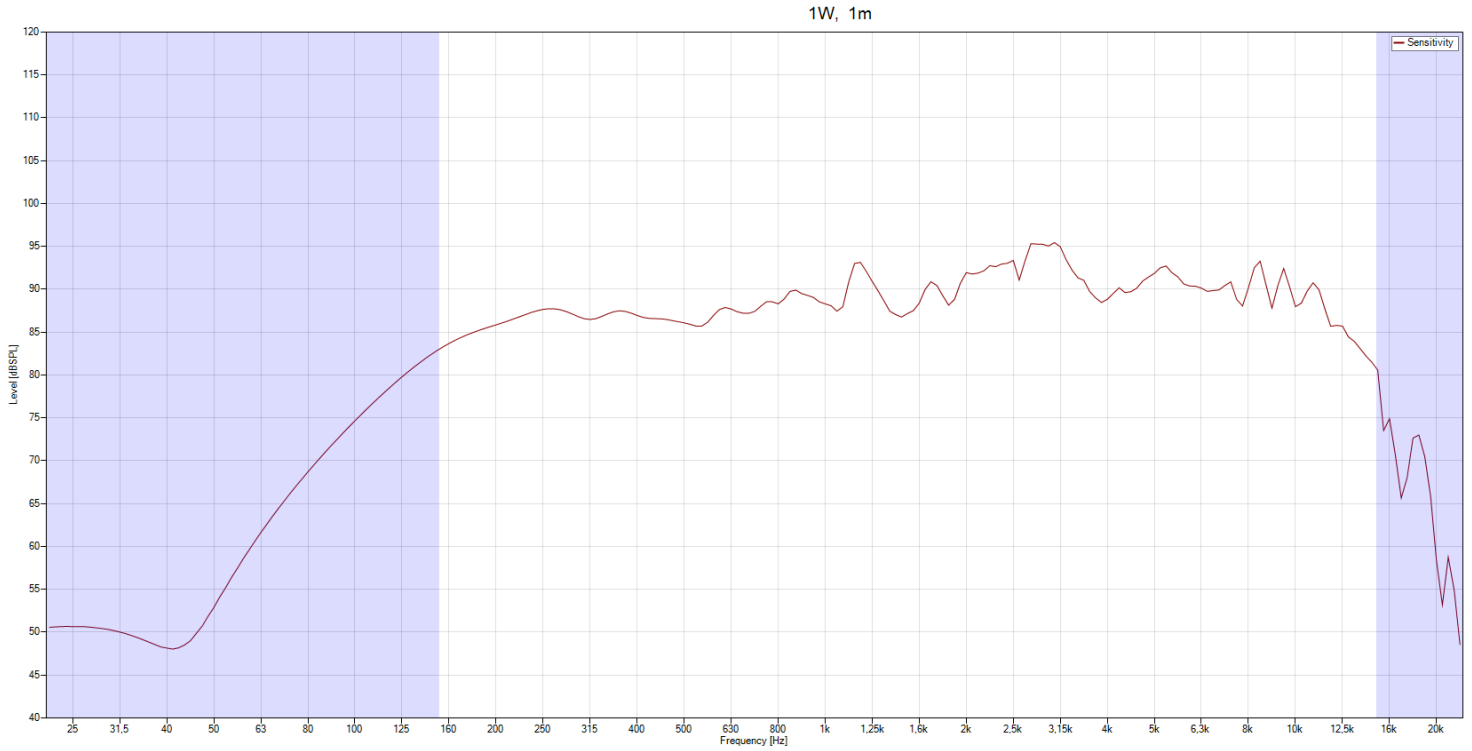


### Polar Diagram 2000Hz



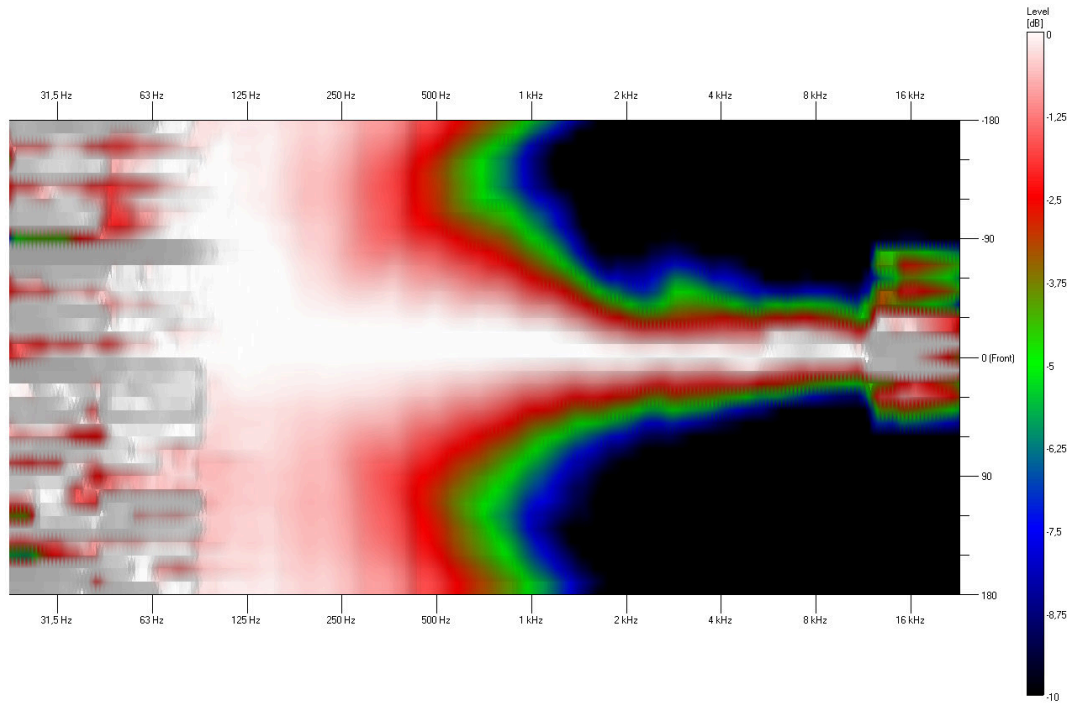
## FREQUENCY RESPONSE DIAGRAMS

### Sensitivity

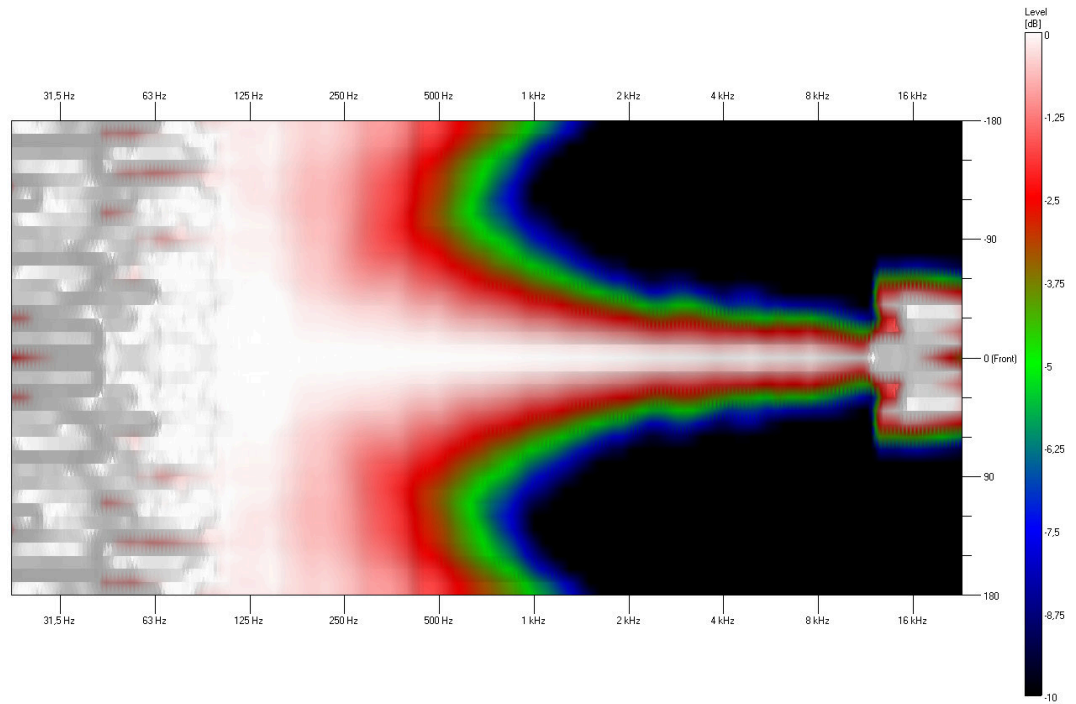


ISOBAR

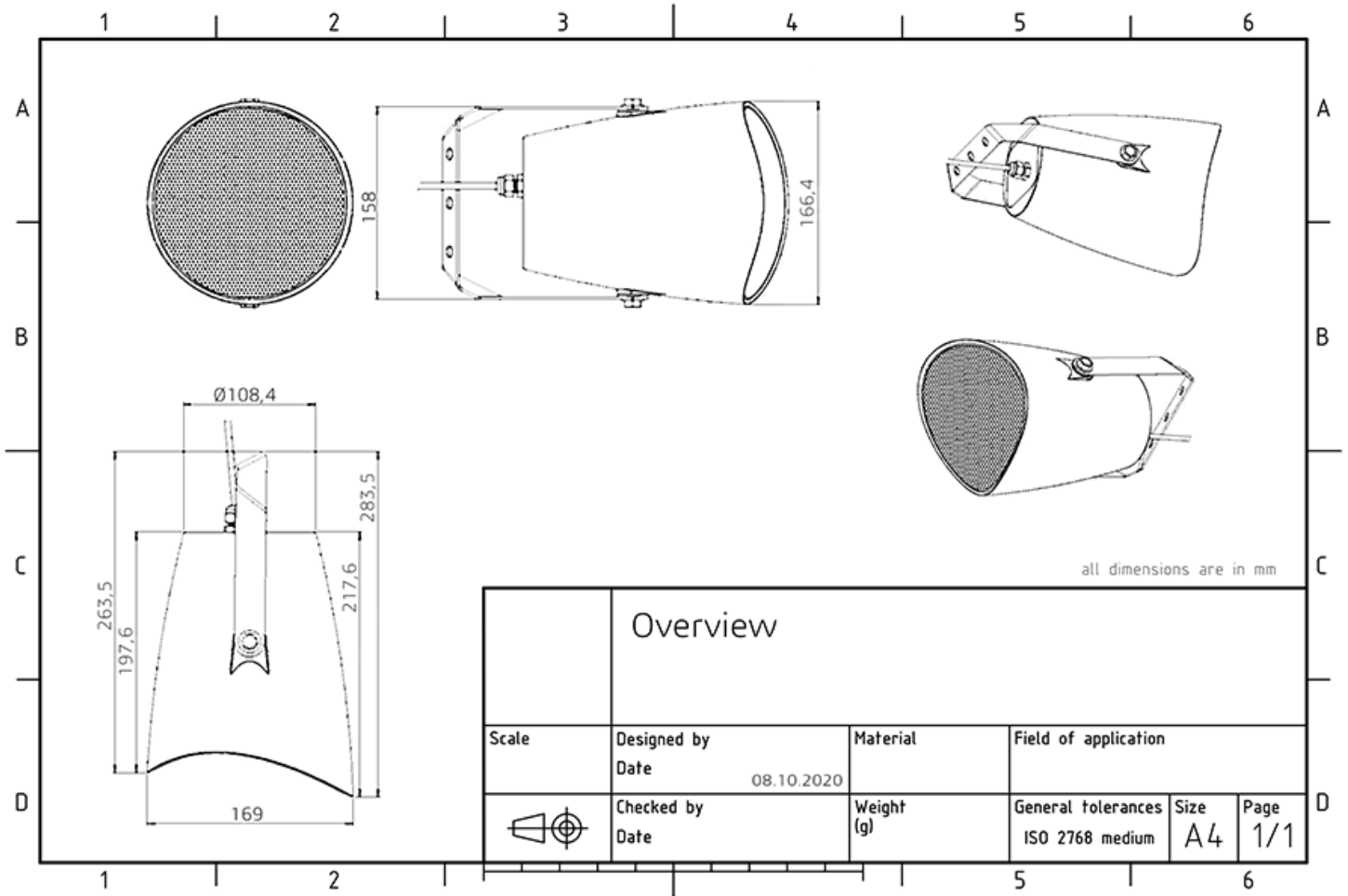
Vertical



Horizontal



**TECHNICAL DIAGRAMS**



## TECHNICAL DATA (ELECTRICAL)

Description	PS-20W-N-PL
Power	20/10/5 W
Impedance (100V)	500/1000/2000 ohm
Frequency Range	142 - 14.300 Hz
Frequency Response	112 - 15.800 Hz
Sensitivity, IEC268-5, 1W/1m	92,0 dB
Sensitivity EN54-24, Pmax/4m	88,0 dB
Sensitivity EN54-24, 1W/4m	76,4 dB
Sensitivity 1W/1m @ 1KHz	89 dB
Dispersion -6dB, 500Hz	h/v 360° / 360°
Dispersion -6dB, 1KHz	h/v 155° / 220°
Dispersion -6dB, 2KHz	h/v 95° / 85°
Dispersion -6dB, 4KHz	h/v 80° / 85°

## TECHNICAL DATA (MECHANICAL)

Dimensions	169x 283,5mm
IP Rating	IP65
Weight (net)	1,76kg
Temperature range	-25 / +70 C°
Mounting	Mounting bracket
Connector	2-pin ceramic block
Maximum cable cross section	3,2 mm
Max. cable cross section loop	8mm <sup>2</sup>
Colour	RAL 9016

### All rights reserved.

The information contained in this document is believed to be accurate; however, no representation or warranty is given, and pAudio Technologies assumes no liability regarding its accuracy or completeness.