

SS-20W-ABS-W

20 Watts Pendent (Spherical) Loudspeaker

APPLICATION

- Public Address and Voice Alarm
- Outdoor application
- Background Music

AREA OF USE

- Health • Education • Retail • Hospitality
- Stadiums • Transportation • Theme parks • Military



EN 54 24

- UV-resistant
- easy power adjustment
- 2-Way system

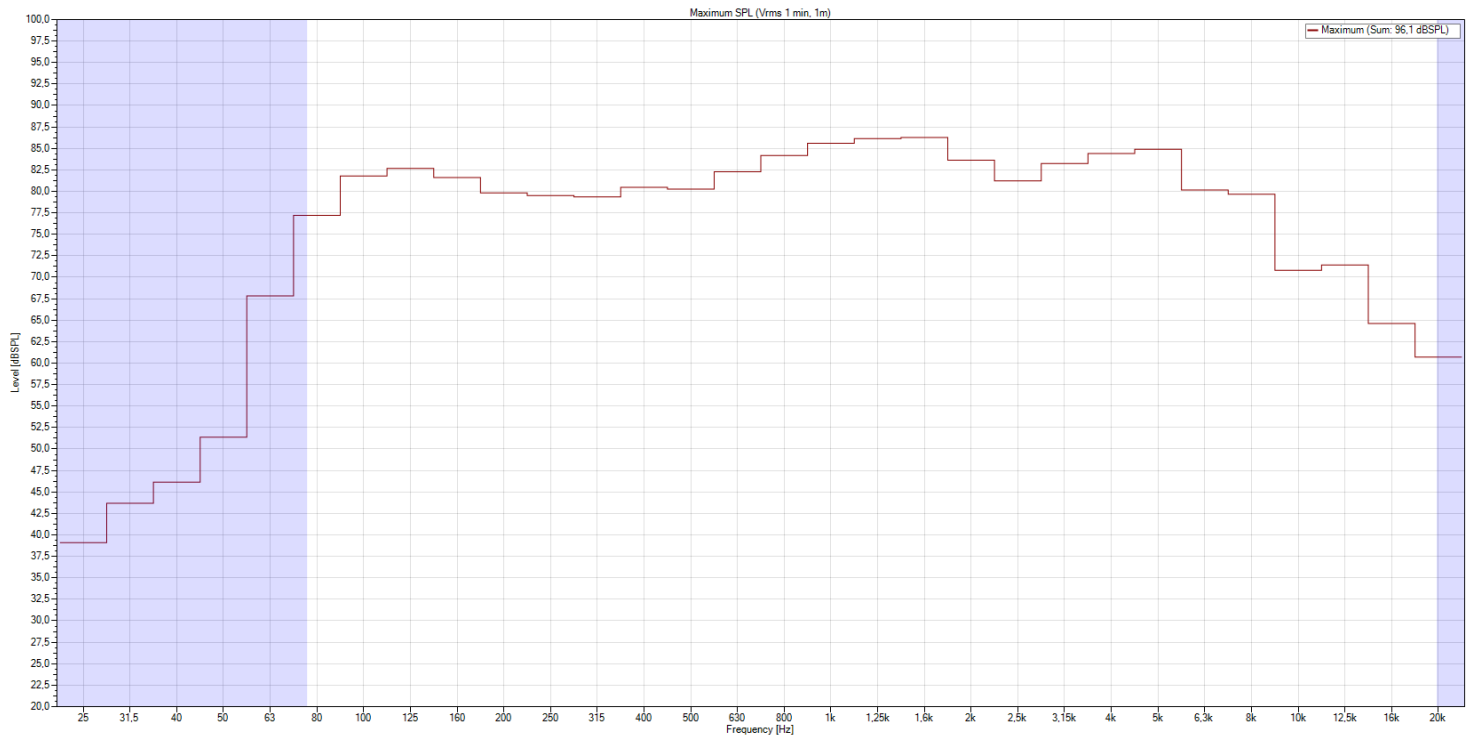
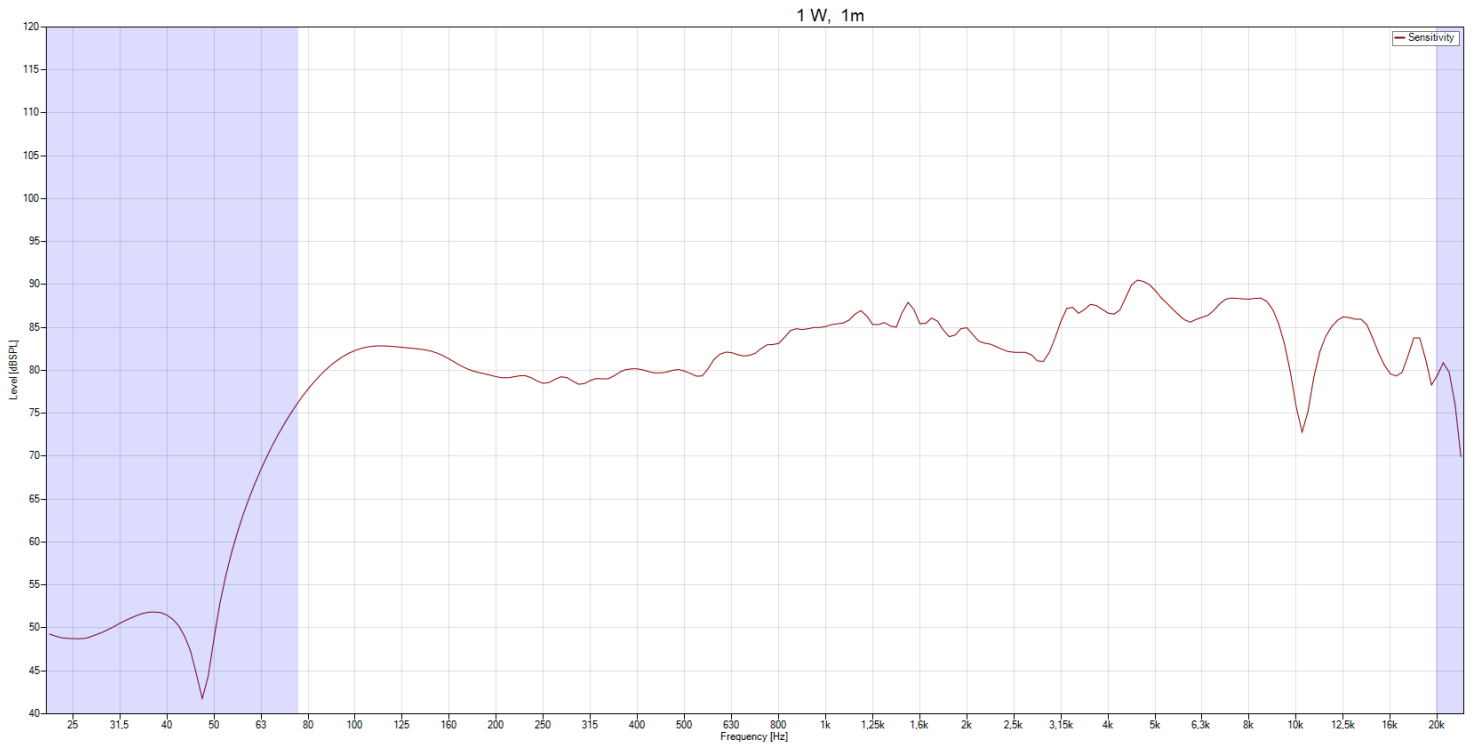
OVERVIEW

The 20W speaker is equipped with a 100mm 2-way bass reflex system and offers powerful sound with a wide and homogeneous dispersion. The SS-20W-ABS has a 100V transformer with 4 power adjustments, these can be easily adjusted by a rotary switch on the top of the sphere. Low impedance operation is also possible. The impact-resistant, UV-resistant ABS plastic housing in RAL 9016 guarantees lasting stability. Additional operational safety is provided by the 2-pole ceramic terminal block, a thermal fuse, a PG screw connection integrated into the canopy and the moisture impregnation of the loudspeaker. The loudspeaker is protected against the risks of environmental influences with protection class IP65.

The connection is made via a 2-core, 4.5m long cable. Quick and uncomplicated installation using mounting hooks and canopy.

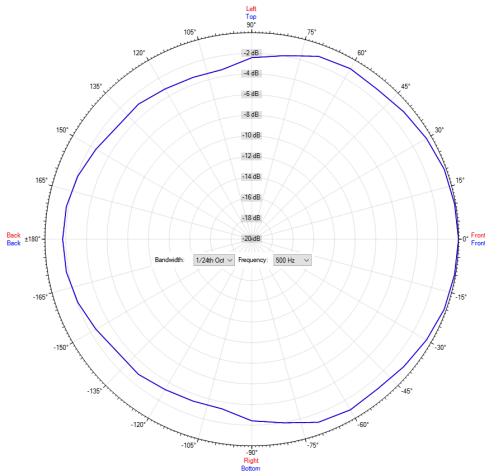
The speaker is compliant with the British Standard BS 5839, Part 8.

SENSITIVITY DIAGRAM

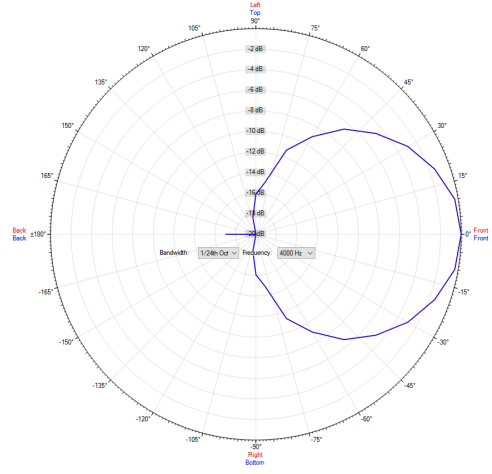


POLAR DIAGRAMS

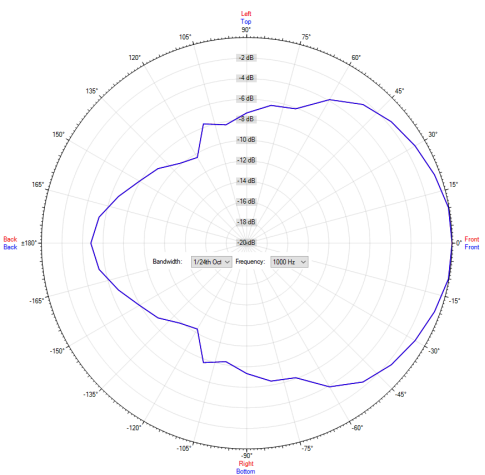
Polar Diagram 500Hz



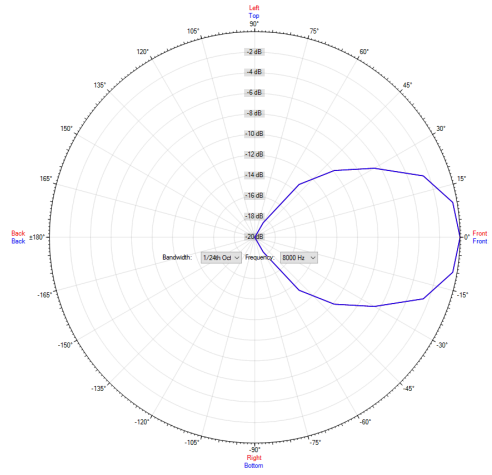
Polar Diagram 4000Hz



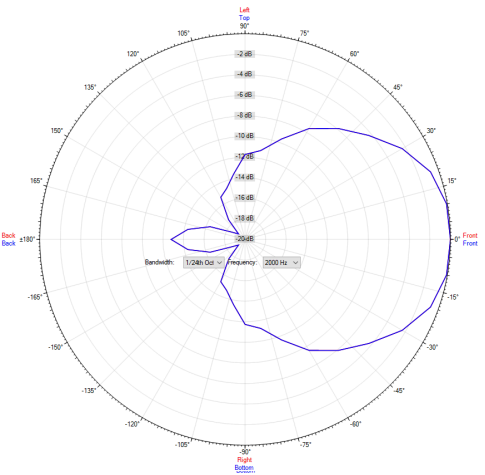
Polar Diagram 1000Hz



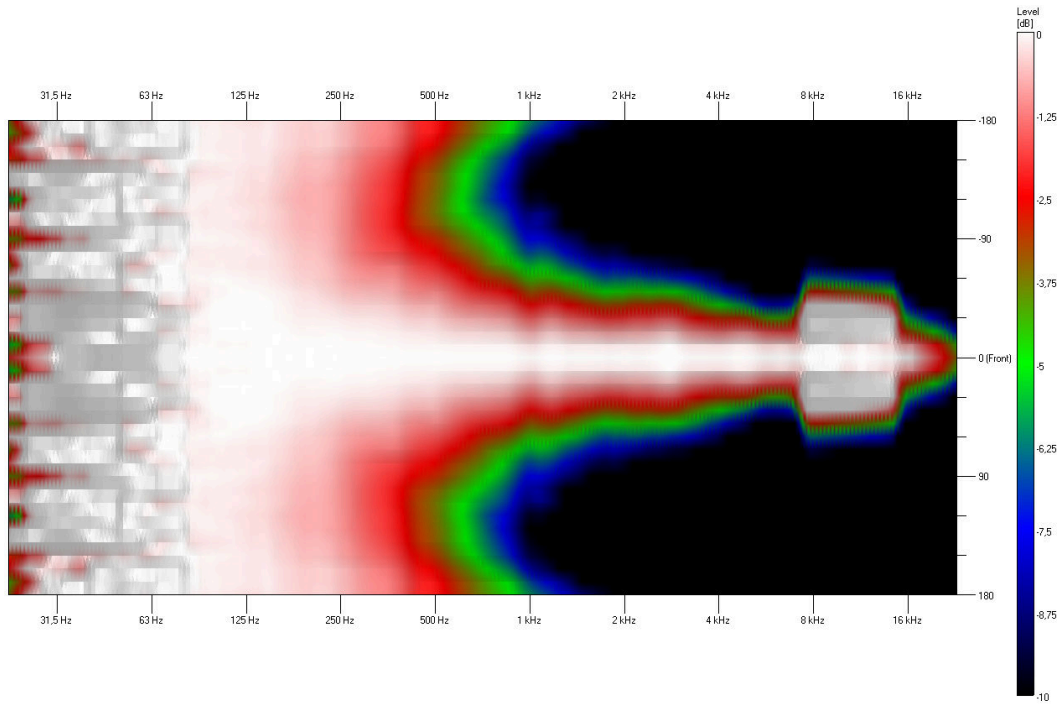
Polar Diagram 8000Hz



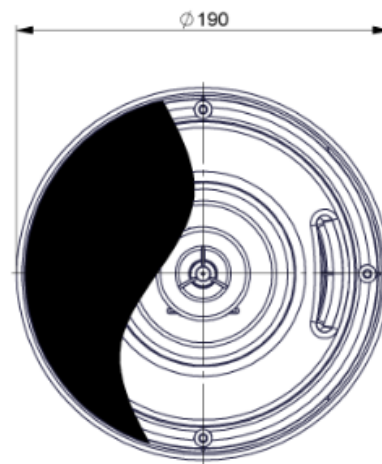
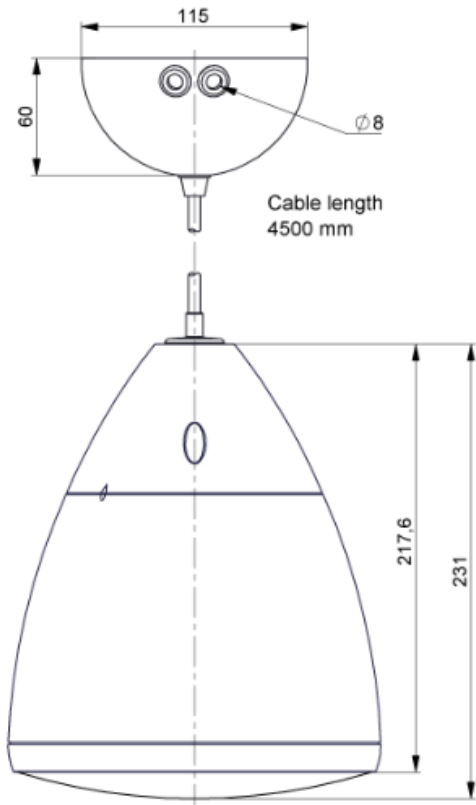
Polar Diagram 2000Hz



ISOBAR DIGRAM



TECHNICAL DIAGRAMS



all dimensions are in mm

TECHNICAL DATA (ELECTRICAL)

Description	SS-20W-ABS-W
Power	20 / 10 / 5 / 2.5 (8)W
Impedance (100V)	500 / 1000 / 2000 / 4000 / 8 ohm
Frequency Range	80 -20.000 Hz
Frequency Response	70 - 22.000 Hz
Sensitivity, IEC268-5, 1W/1m	87 dB
Sensitivity, rated noise power / 4m	84,1 dB
Sensitivity, EN54-24, Pmax./4m	84,1 dB
Sensitivity EN54-24, 1W/4m	71,9 dB
Sensitivity 1W/1m @ 1KHz	85 dB
Dispersion -6dB, 500Hz	h/v 360° / 360°
Dispersion -6dB, 1KHz	h/v 160° / 160°
Dispersion -6dB, 2KHz	h/v 102° / 102°
Dispersion -6dB, 4KHz	h/v 86° / 86°

TECHNICAL DATA (MECHANICAL)

Dimensions	189,4x231 mm
IP Rating	IP65
Weight (net)	2,02 kg
Temperature range	-10 / +55 °C
Mounting	Mounting hook
Connector	2-pin screw terminal
Maximum cable cross section	8mm ²
Max. cable cross section loop	2x2mm ²
Colour	RAL 9016

All rights reserved.

The information contained in this document is believed to be accurate; however, no representation or warranty is given, and pAudio Technologies assumes no liability regarding its accuracy or completeness.