

# WMS-F-06W-165

## 6 Watts Strobe Loudspeaker

### APPLICATION

- Public Address and Voice Alarm
- Outdoor application
- Background Music

### AREA OF USE

- Health • Education • Retail • Hospitality
- Stadiums • Transportation • Theme parks • Military



**EN 54 24**

- All-metal construction
- Vandal-proof
- LED strobe flashlight

### OVERVIEW

This speaker is the best choice for sensitive installations like prisons or industrial areas where plastic and wooden materials are not an option.

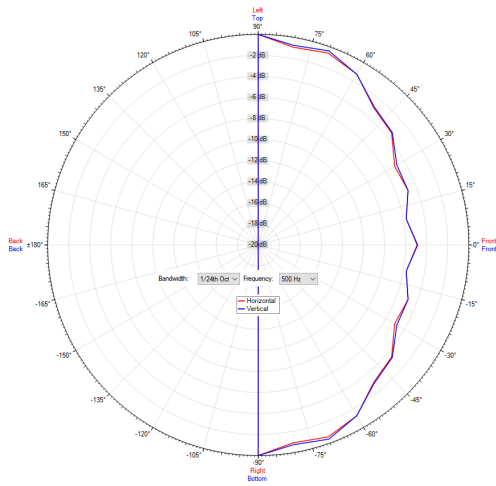
The 6W powered speaker is equipped with a 165mm full-range loudspeaker chassis and a 100V transformer with 3 power adjustments. In addition, the loudspeaker has a LED strobe flashlight that, in a new version with 14 candela, delivers almost 3 times brightness. This very high-performance white LED provides 1.400 lux at a distance of 100mm and a flashing frequency of 75 flashes per minute. With 18 lumens of light and a wide beam angle (75°), the strobe flashlight provides bright and uniform area illumination. Operating voltage of the flashing light 24 VDC, current consumption max.: 9 mA.

The extremely stable metal housing in RAL 9010 with corrosion-resistant powder coating, offers tremendous resilience paired with an unobtrusive design. A 2-pin ceramic block and a thermal fuse provide additional reliability. The speaker chassis is impregnated against wetness.

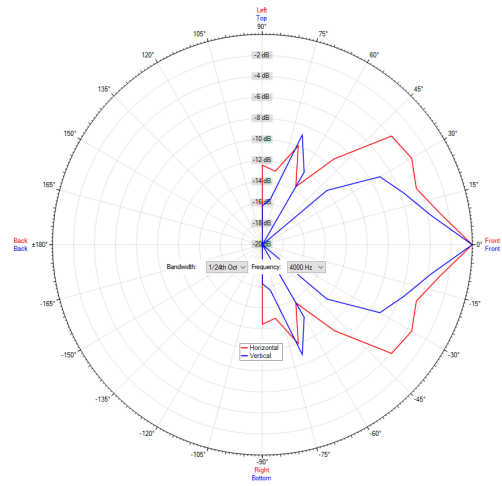
The speaker is secured with protection class IP 21C against the risks of environmental influences. It is also compliant with the British Standard BS 5839, Part 8. Quick and easy screw mounting.

## POLAR DIAGRAMS

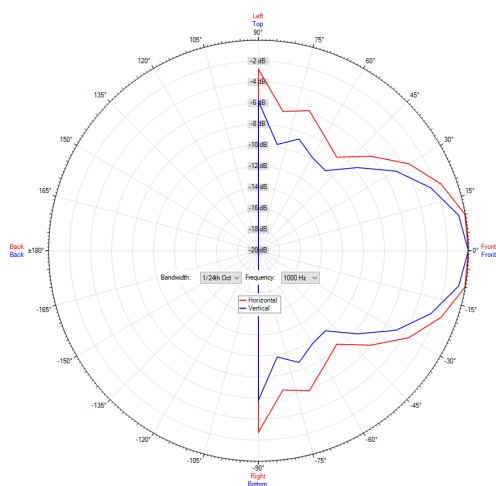
Polar Diagram 500Hz



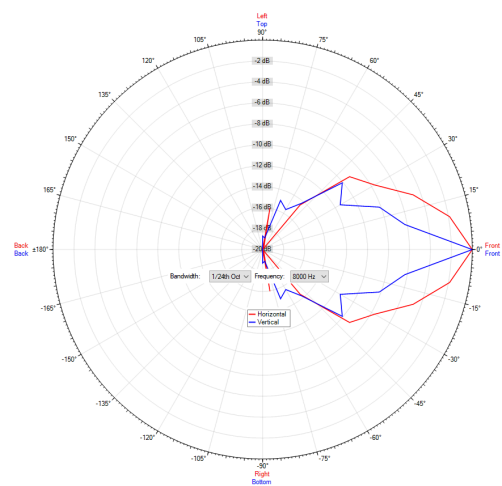
Polar Diagram 4000Hz



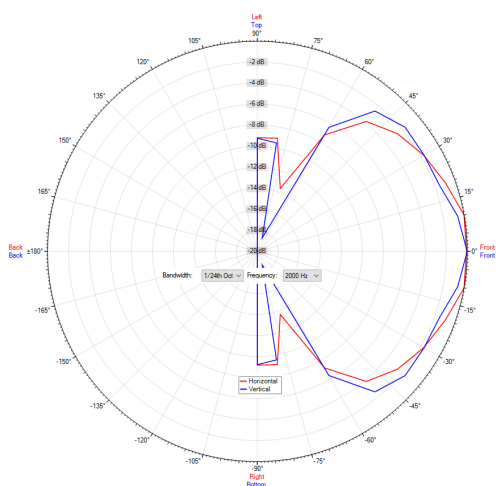
Polar Diagram 1000Hz



Polar Diagram 8000Hz

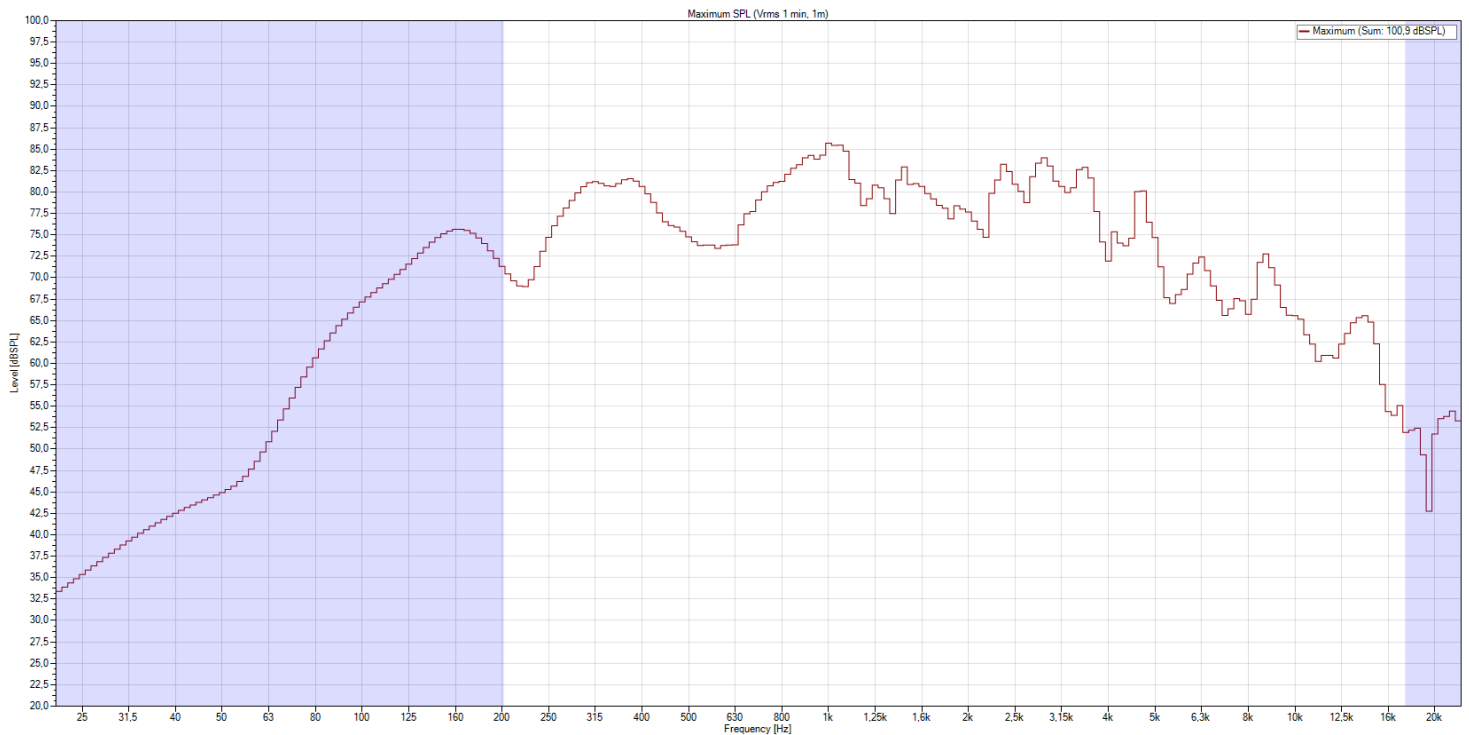
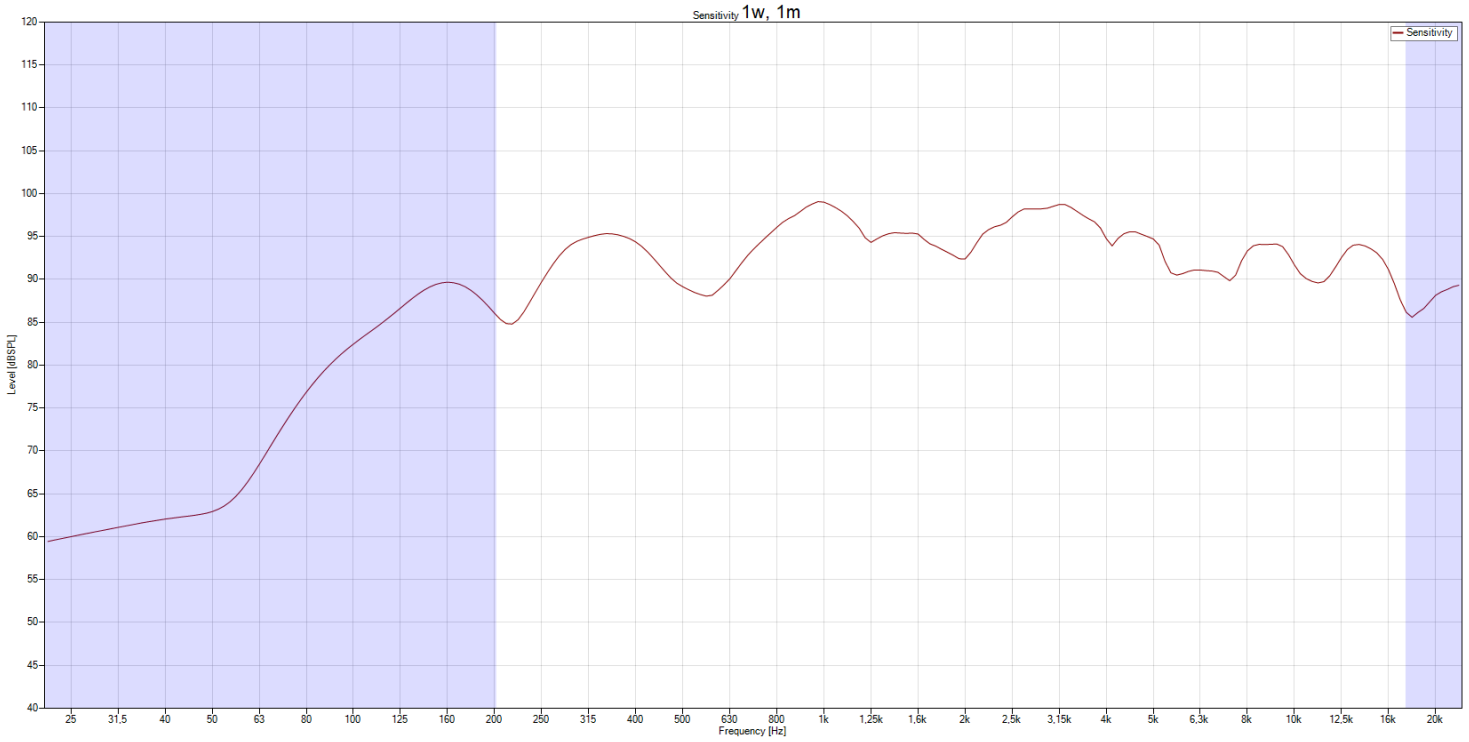


Polar Diagram 2000Hz



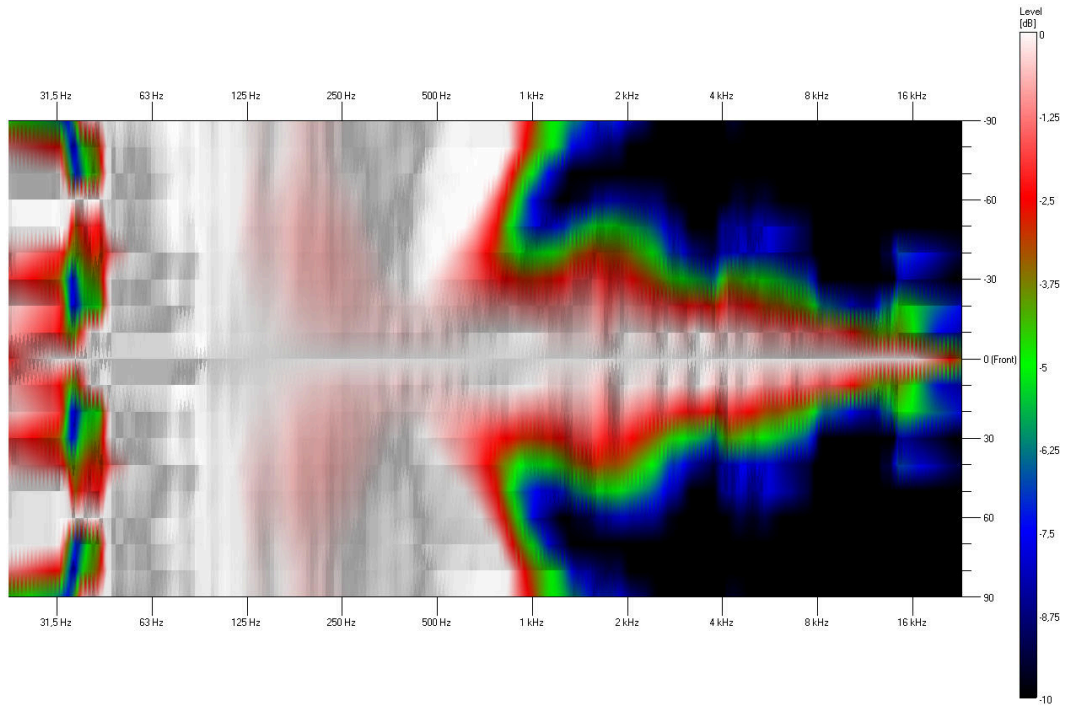
## FREQUENCY RESPONSE DIAGRAMS

### Sensitivity

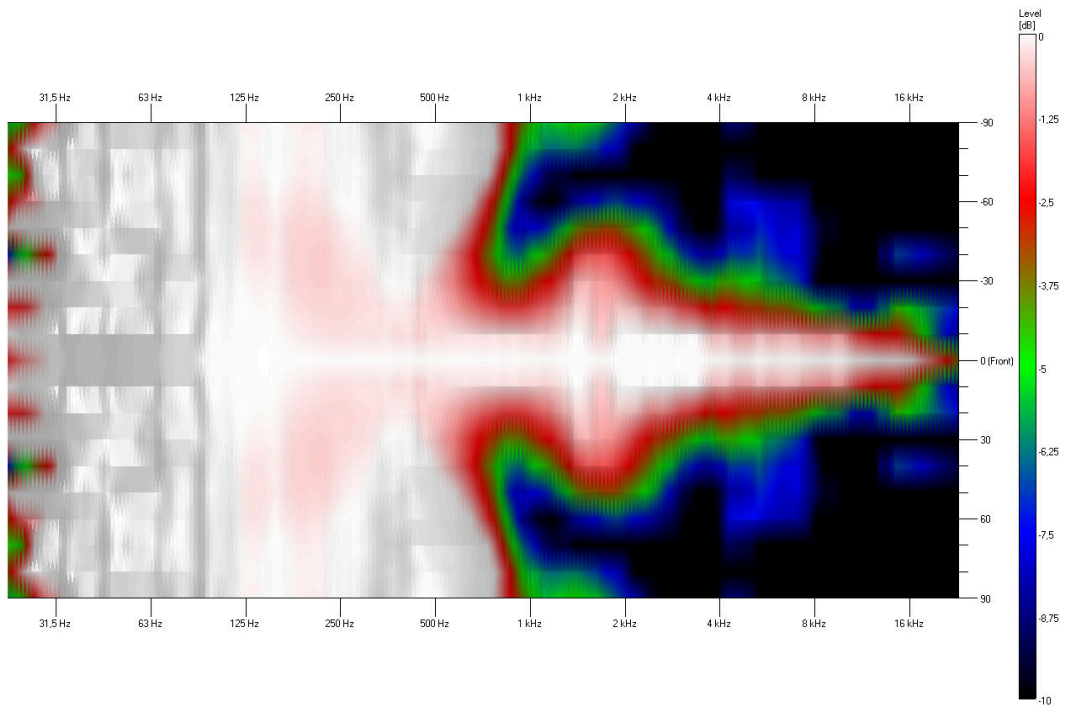


ISOBAR

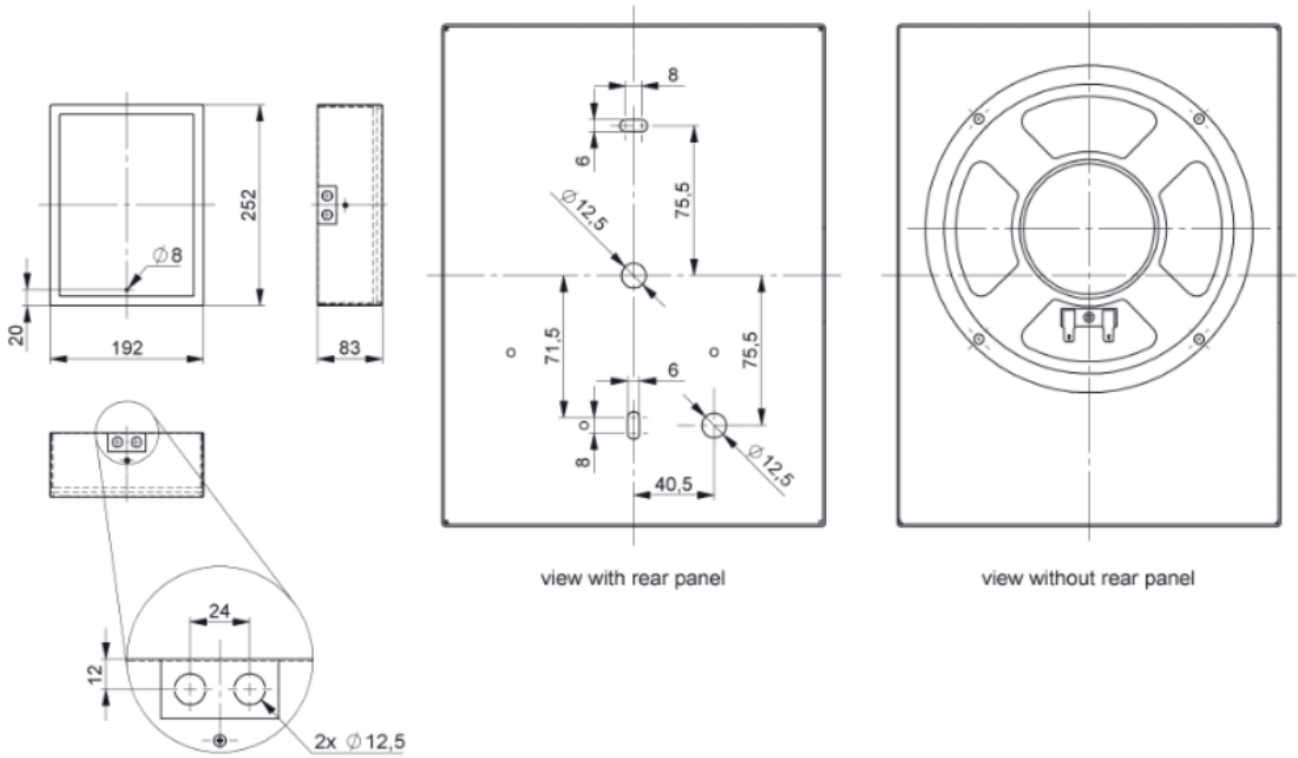
Horizontal



Vertical



**TECHNICAL DIAGRAMS**



view with rear panel

view without rear panel

all dimensions are in mm

## TECHNICAL DATA (ELECTRICAL)

Description	WMS-F-06W-165
Power	6/3/1,5 W
Impedance (100V)	1667/ 3333/6667 ohm
Frequency Range	170 - 18.500 Hz
Frequency Response	70 - 23.500 Hz
Sensitivity, IEC268-5, 1W/1m	94,0 dB
Sensitivity EN54-24, Pmax/4m	90,0 dB
Sensitivity EN54-24, 1W/4m	82,0 dB
Light intensity	14 cd
Dispersion -6dB, 500Hz	h=180° v=180°
Dispersion -6dB, 1KHz	h=160° v=160°
Dispersion -6dB, 2KHz	h=120° v=120°
Dispersion -6dB, 4KHz	h=76° v=76°

## TECHNICAL DATA (MECHANICAL)

Dimensions	252x192x82 mm
IP Rating	IP21
Weight (net)	1,95 kg
Temperature range	-10 / +55 C°
Mounting	Screws
Connector	2-pin ceramic block
Maximum cable cross section	3,2 mm
Maximum Cable Passage	8mm <sup>2</sup>
Colour	RAL 9010

### All rights reserved.

The information contained in this document is believed to be accurate; however, no representation or warranty is given, and pAudio Technologies assumes no liability regarding its accuracy or completeness.