

10 Watts Column Loudspeaker

APPLICATION

- Public Address and Voice Alarm
- Outdoor application
- Background Music

AREA OF USE

- Health • Education • Retail • Hospitality
- Stadiums • Transportation • Theme parks • Military



EN 54 24

- Aluminium housing
- Weather-proof
- BS 5839

OVERVIEW

The 10W powered speaker is equipped with four 77mm full-range loudspeaker chassis and a 100V transformer with 4 power adjustments. The powder coated and shock-resistant aluminium housing in RAL 9006 guarantees long-term stability. For additional reliability, a 2 pin-ceramic block, a thermal fuse is provided and the speaker chassis is impregnated against wetness. Furthermore sturdy cable glands 2 x PG9 are also provided.

The speaker is also secured with the high protection class IP 66 against the security risks of environmental influences.

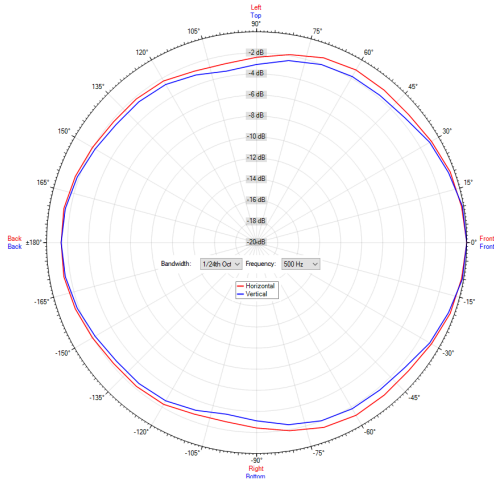
The speaker is compliant with the British Standard BS 5839, Part 8.

The easy mounting with the included swivel bracket provides much flexibility for the installation. Special paint of the speaker in 4-digit RAL- or NCS- colour available at extra cost.

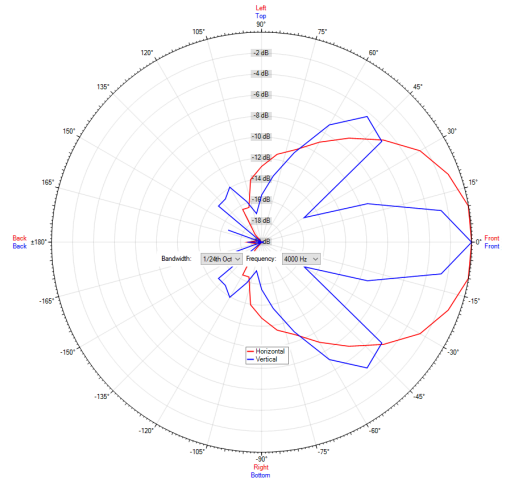
The ball proof compliance of the sound column can only be guaranteed if a wall bracket is used. This can be ordered separately.

POLAR DIAGRAMS

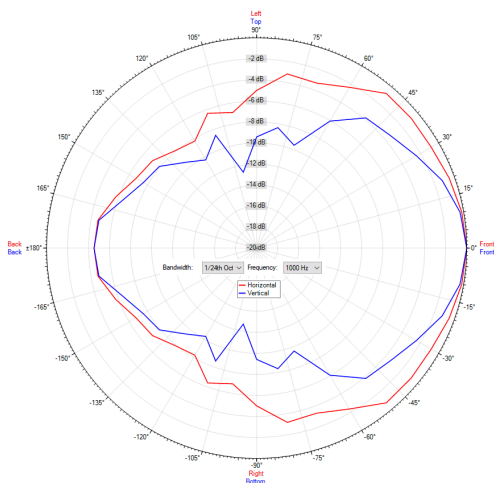
Polar Diagram 500Hz



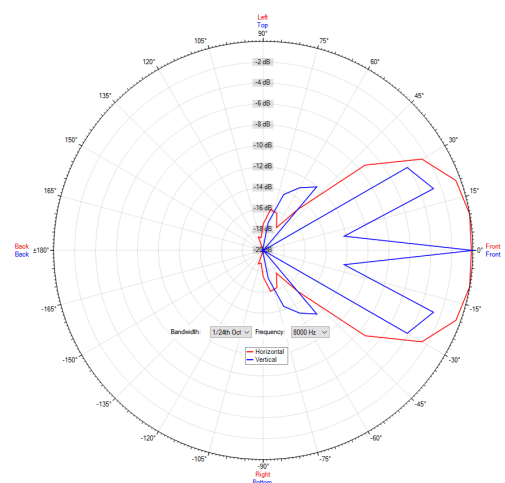
Polar Diagram 4000Hz



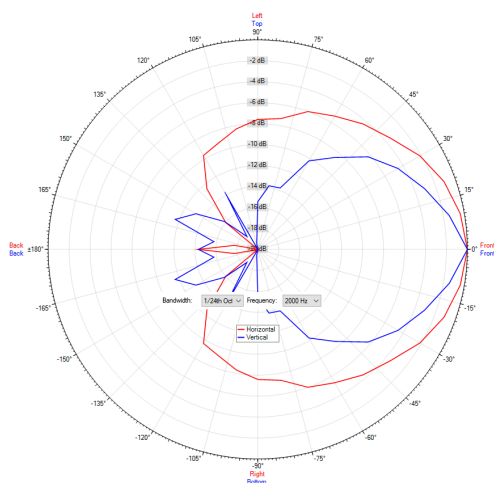
Polar Diagram 1000Hz



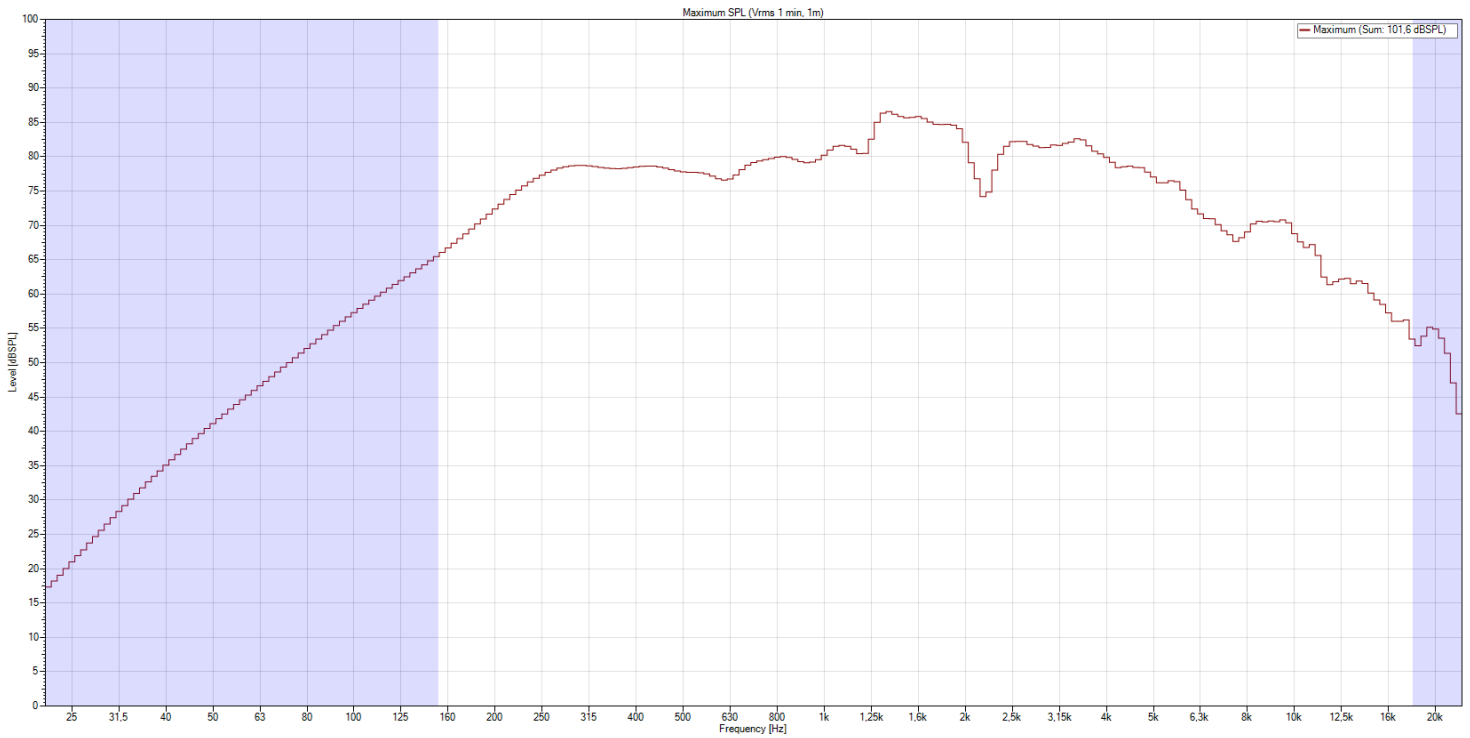
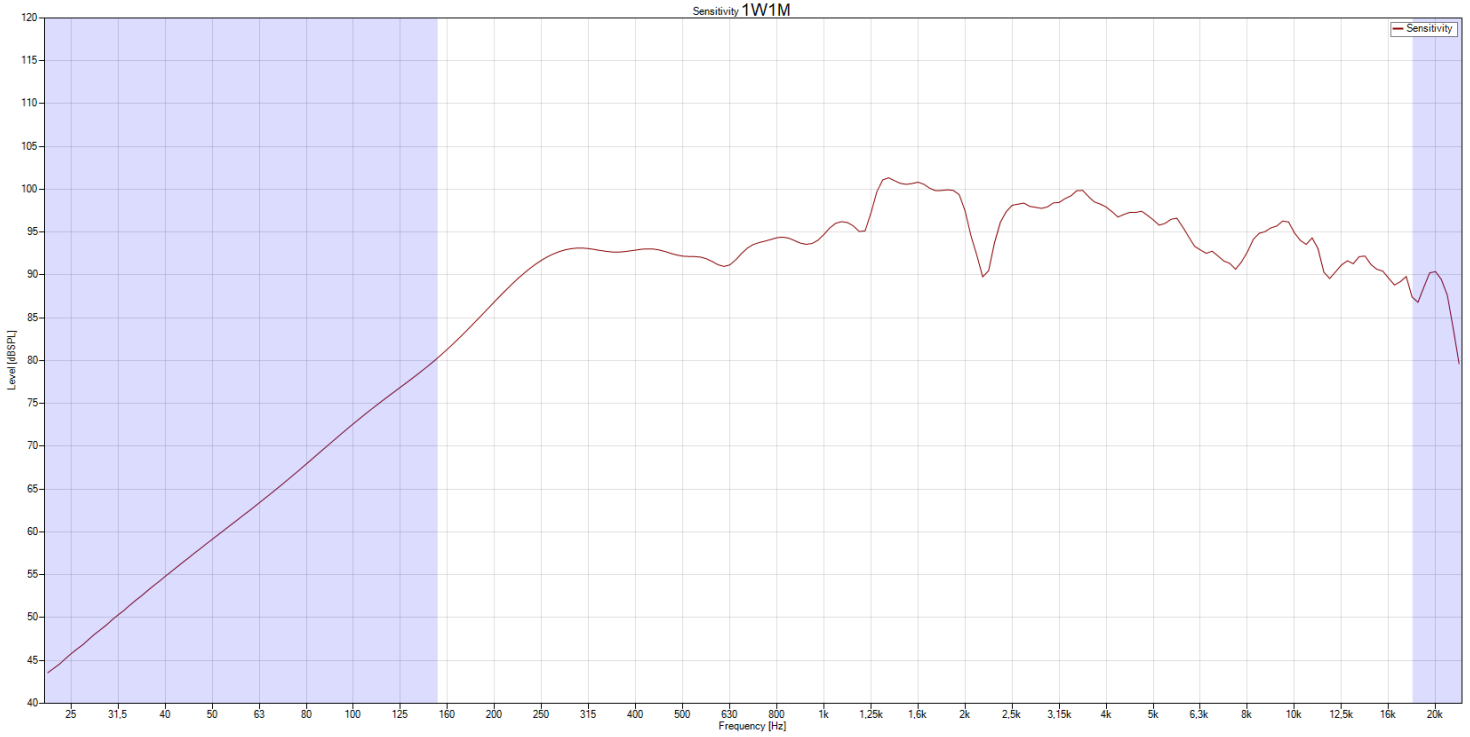
Polar Diagram 8000Hz



Polar Diagram 2000Hz

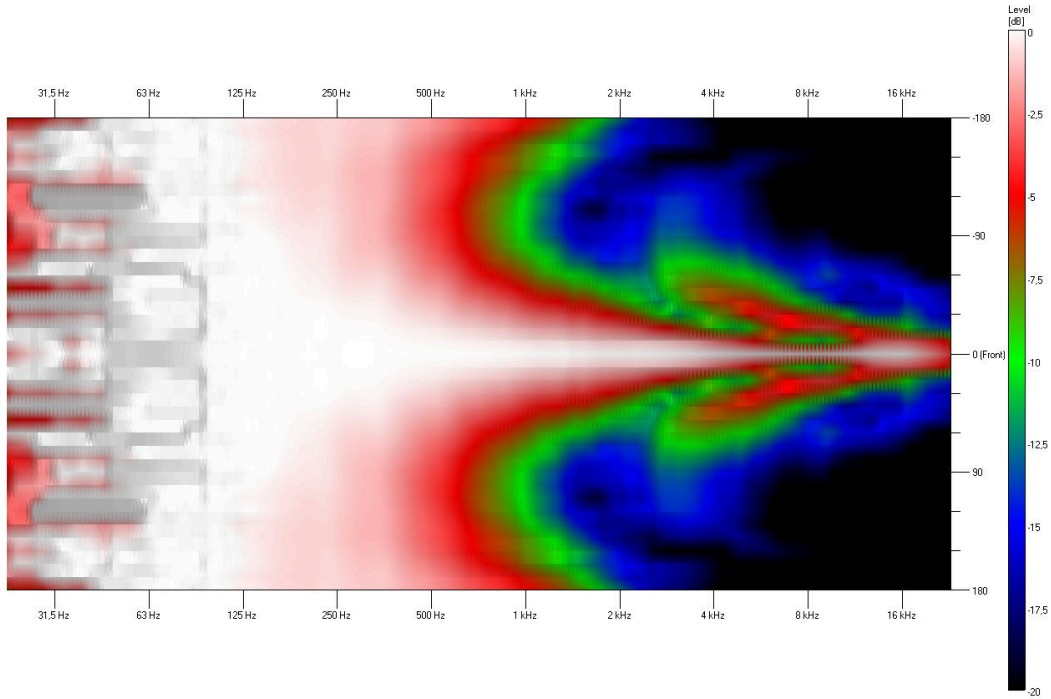


FREQUENCY RESPONSE DIAGRAMS

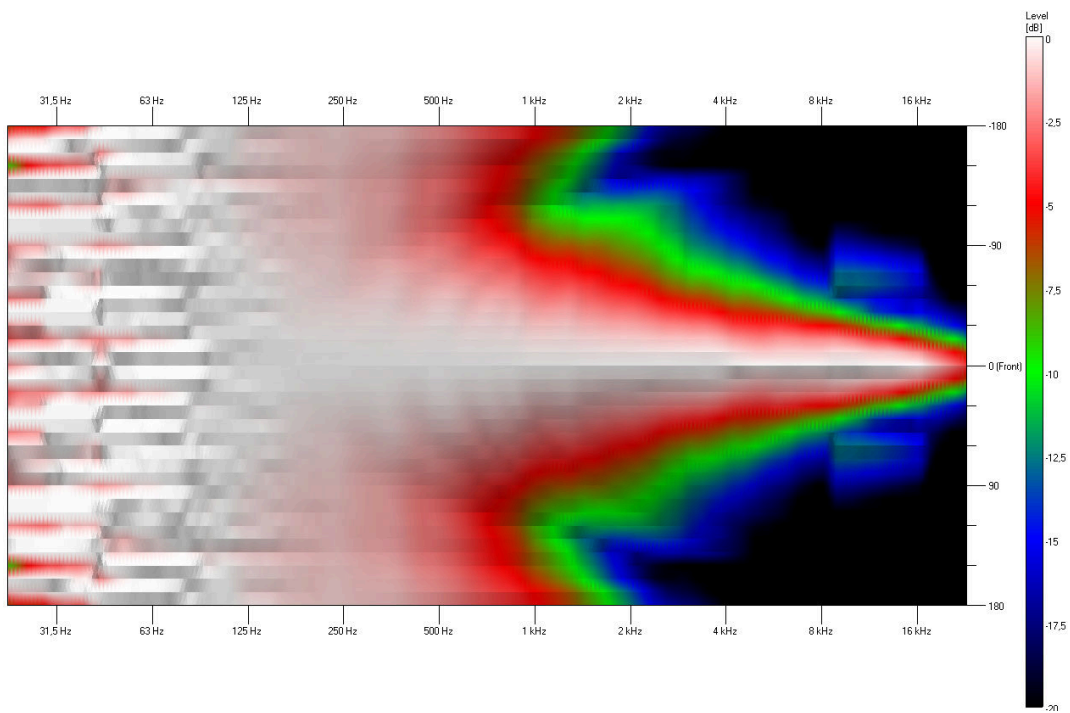


ISOBAR

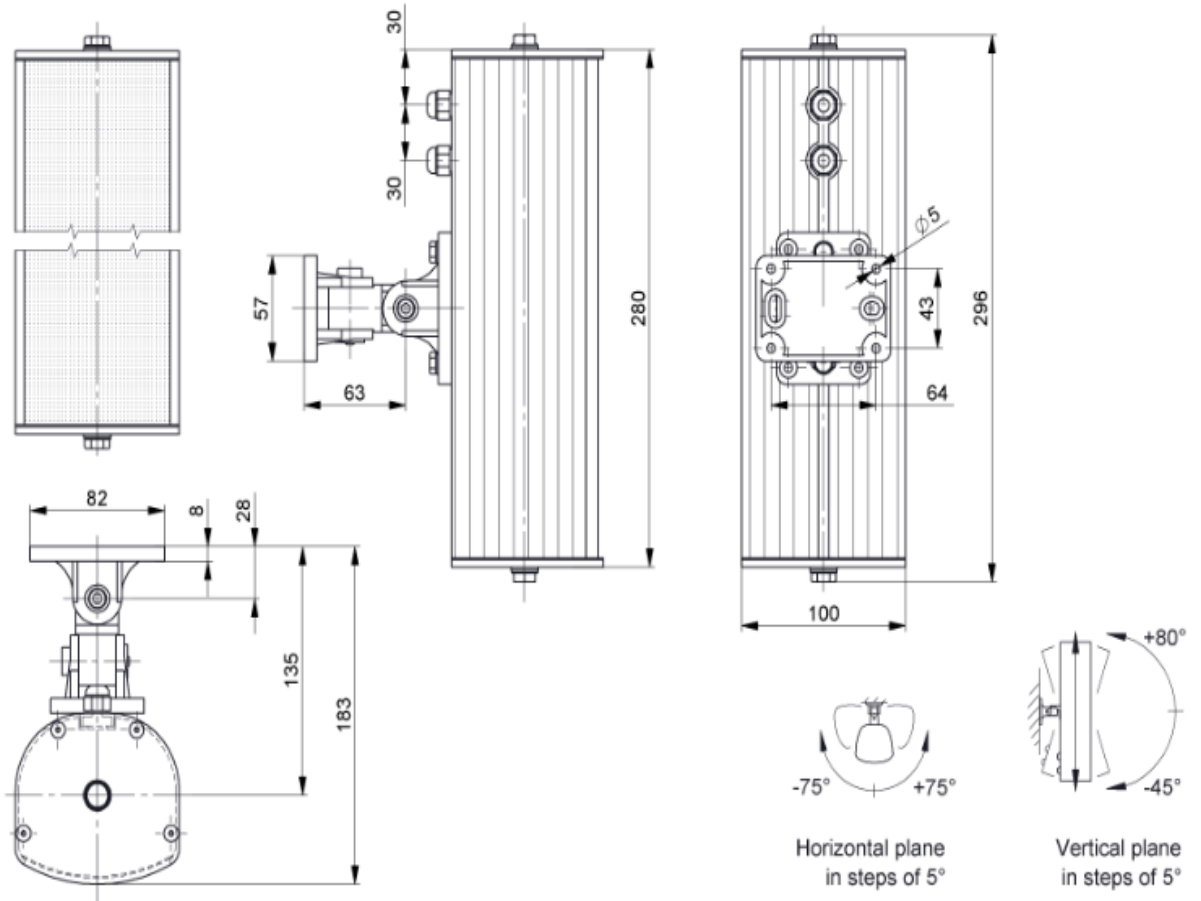
Vertical



Horizontal



TECHNICAL DIAGRAMS



all dimensions are in mm

TECHNICAL DATA (ELECTRICAL)

Description	CLS-20W-AL
Power	10/6/3/1,5 W
Impedance (100V)	1000/1667/3333/6667 ohm
Frequency Range	210 - 17.700 Hz
Frequency Response	140 - 23.500 Hz
Sensitivity , IEC268-5, 1W/1m	89,0 dB
SPL EN54-24, Pmax/4m	88,6 dB
Sensitivity EN54-24, 1W/4m	77,2 dB
Sensitivity EN54-24, 1W/1m	89,2 dB
Dispersion -6dB, 500Hz	h/v = 360°
Dispersion -6dB, 1KHz	h = 187°, v = 108°
Dispersion -6dB, 2KHz	h = 149°, v = 66°
Dispersion -6dB, 4KHz	h = 91°, v = 32°

TECHNICAL DATA (MECHANICAL)

Dimensions	285x100x92 mm
IP Rating	IP66
Weight (net)	1,70 kg
Temperature range	-25 / +70 C°
Mounting	Swivel bracket
Connector	2-pin ceramic block
Terminal Diameter	4mm ²
Maximum Cable Passage	12,5 mm ²
Colour	RAL 9006

All rights reserved.

The information contained in this document is believed to be accurate; however, no representation or warranty is given, and pAudio Technologies assumes no liability regarding its accuracy or completeness.