

60 Watts Ceiling loudspeaker

APPLICATION

- Public Address and Voice Alarm
- Outdoor application
- Background Music

AREA OF USE

- Health • Education • Retail • Hospitality
- Stadiums • Transportation • Theme parks • Military



EN 54 24

- bass-reflex
- shallow installation depth
- magnetic fastening of grille



OVERVIEW

With a low-profile design, the CSFLD voice alarm loudspeaker series, certified EN 54-24, blends seamlessly into any environment.

With a powerful 2-way bass-reflex system and an impressive 60W, the speaker sets new standards for clear and powerful sound. The 140mm woofer of high quality polypropylene and the precise 25mm tweeter guarantee excellent music reproduction.

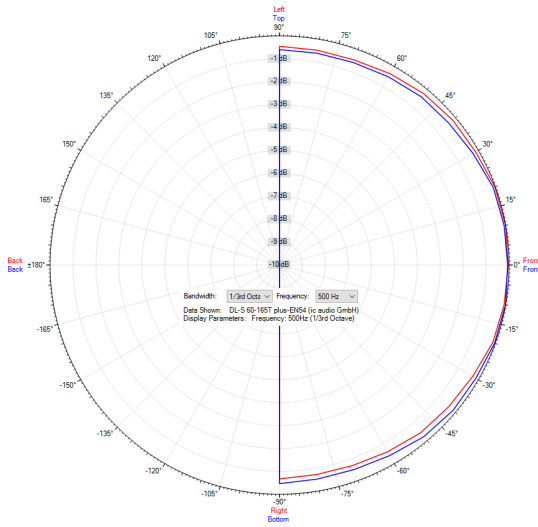
The loudspeaker offers a wide dispersion behaviour, filling the room with exceptional sound. Connection options are convenient via the screw terminal with IN-OUT for loop connections, while power adjustments via a rotary switch enable individual sound customisation.

This speaker offers the flexibility of low-impedance operation, allowing it to be optimised for different requirements. The magnetic grille and screw mounting system simplify installation and ensure an elegant appearance.

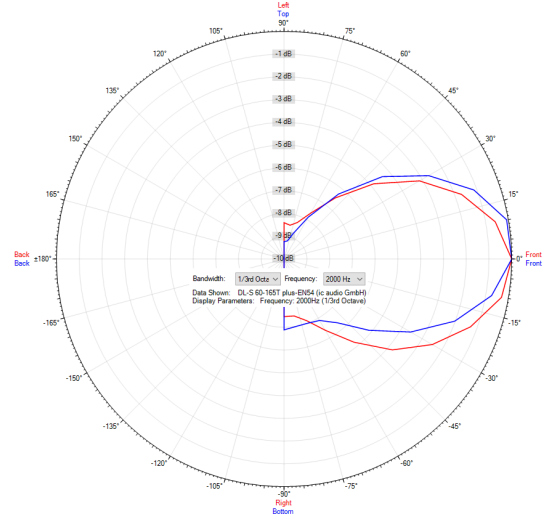
The speaker's housing, made of high-quality ABS plastic, not only promises long-lasting performance but also blends aesthetically into any environment.

POLAR DIAGRAMS

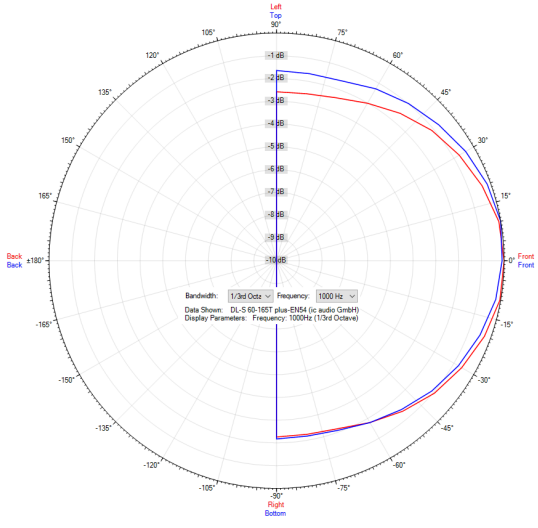
Polar Diagram 500Hz



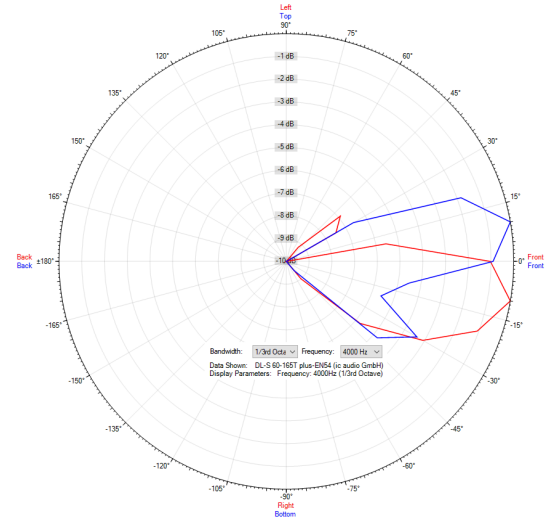
Polar Diagram 2000Hz



Polar Diagram 1000Hz

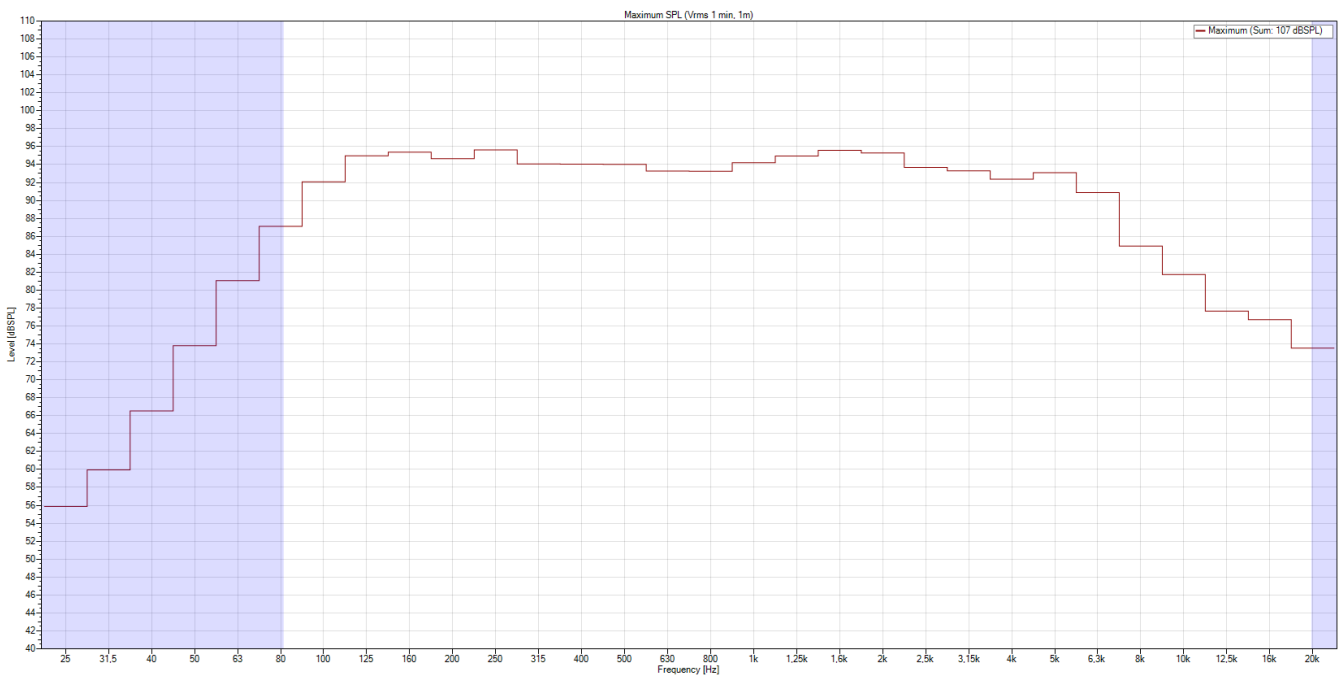
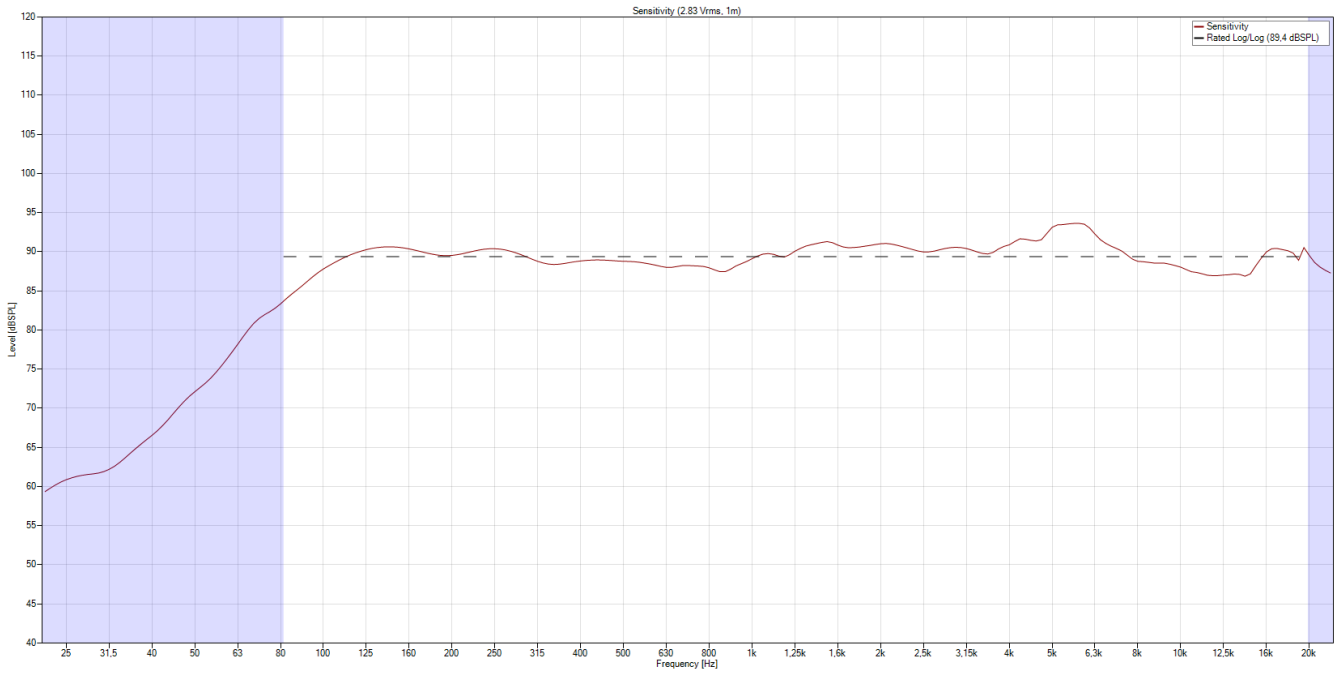


Polar Diagram 4000Hz

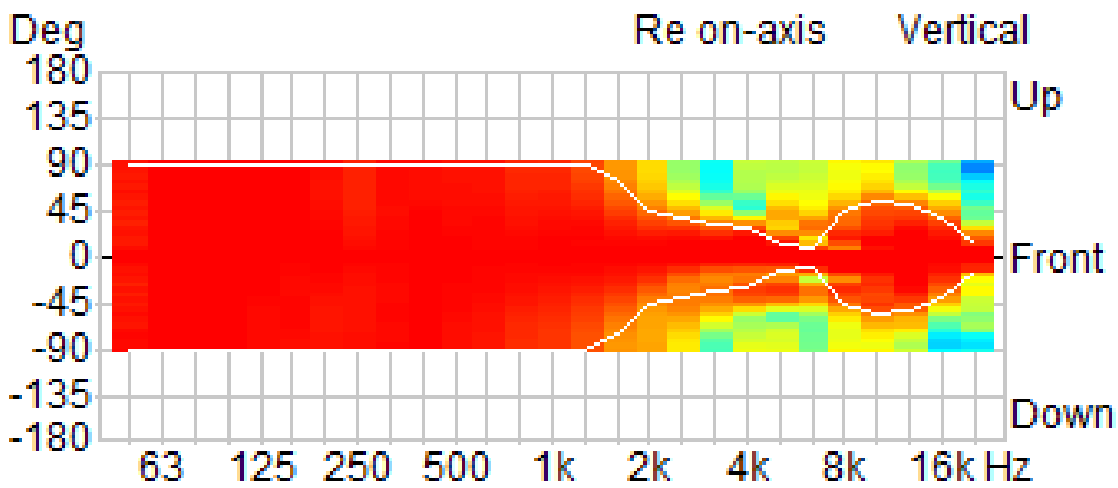
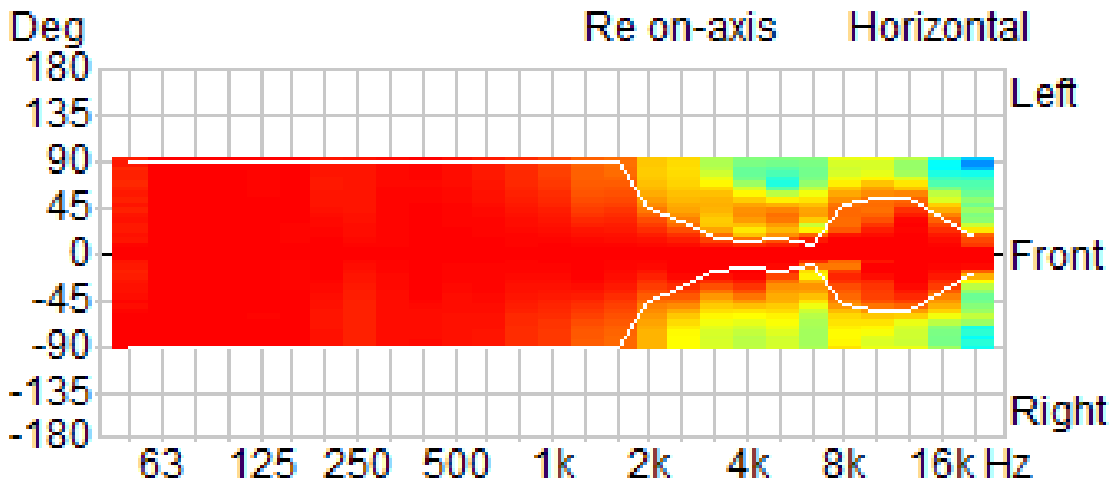


FREQUENCY RESPONSE DIAGRAMS

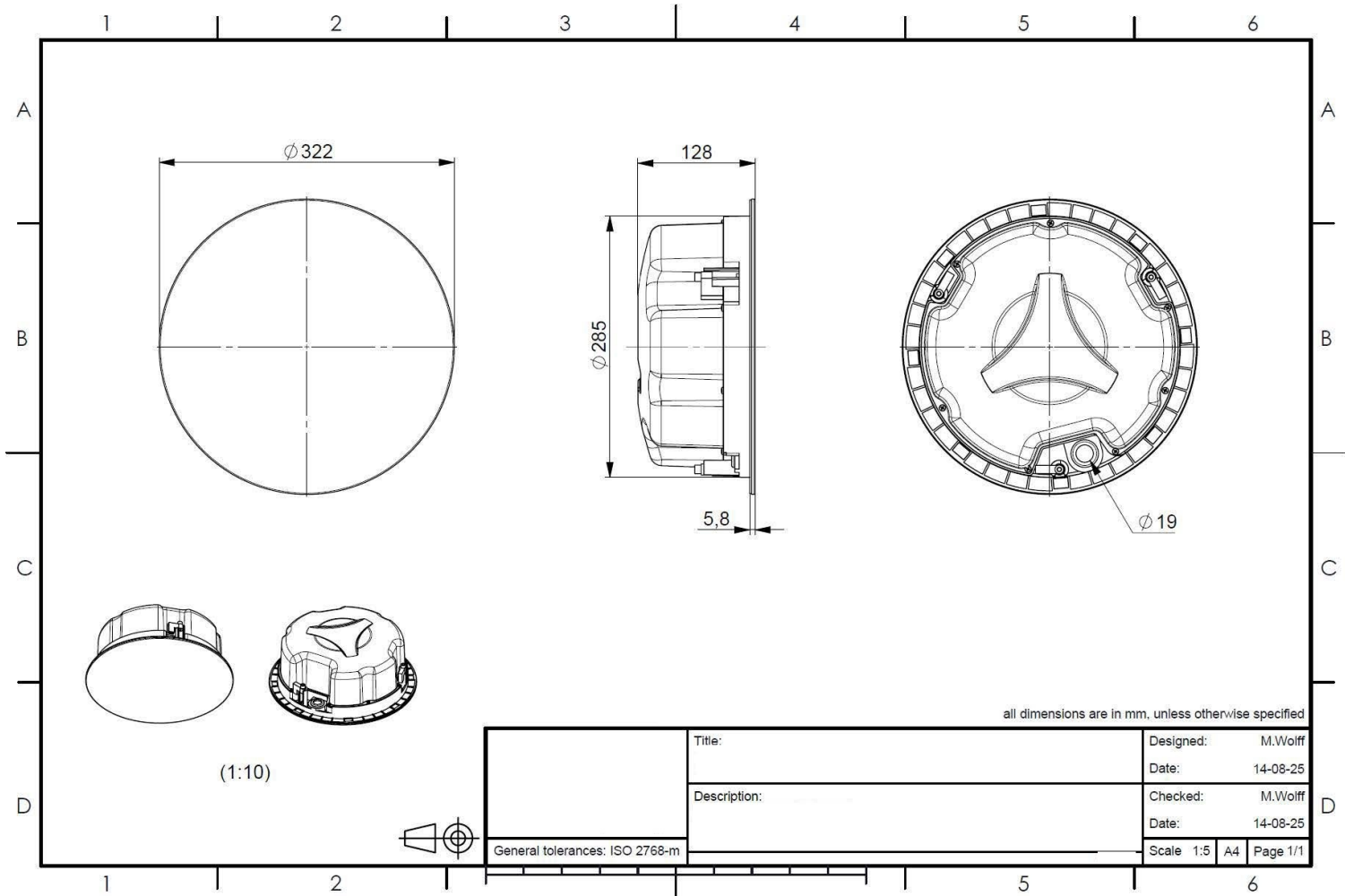
Sensitivity



ISOBAR



TECHNICAL DIAGRAMS



TECHNICAL DATA (ELECTRICAL)

Description	CSFLD-60W-165-BR
Power	60/30/15/7.5(8) W
Impedance (100V)	167/333/667/1333 ohm
Frequency Range	70 - 20.500 Hz
Frequency Response	60 - 21.000 Hz
Sensitivity , IEC268-5, 1W/1m	95 dB
Sensitivity EN54-24, 1W/4m	77,6 dB
Sensitivity EN54-24, 1W/1m	89,3 dB
Dispersion -6dB, 500Hz	h/v 180°/180°
Dispersion -6dB, 1KHz	h/v 180°/180°
Dispersion -6dB, 2KHz	h/v105°/96°
Dispersion -6dB, 4KHz	h/v 57°/75°

TECHNICAL DATA (MECHANICAL)

Dimensions	322x128 mm
IP Rating	IP21
Weight (net)	2,30kg
Temperature range	-10 / +55 °C
Mounting	Screw system
Connector	6-pin screw terminal
Colour	RAL 9016

All rights reserved.

The information contained in this document is believed to be accurate; however, no representation or warranty is given, and pAudio Technologies assumes no liability regarding its accuracy or completeness.