

IVO Compact FIRE

Voice Alarm and Fire Detection System

Datasheet

IVO Compact FIRE is a Voice Alarm and Fire Detection System, dedicated to small and medium facilities, designed for wall mounting.

IVO Compact FIRE allows full phase evacuation with (2 audio streams at the time) and up to 16 loudspeaker lines totaling of up to 1000 W of connected loudspeakers.

IZW short-circuit isolators allows direct connection to loudspeaker loops typical conventional fire detectors and manual call points. The detectors and MCP are addressed through to IZW modules. The fire loudspeakers, detectors and manual call points operate on the same 2-wire cable loop.

The combination of Voice Alarm and Fire Detection based on IVO Compact FIRE technology, significantly affects cost of of the fire protection installation thanks to common wiring and hardware.

The system is fully compatible with the flagship PA/VA IVO rack system, using the same range of console microphones and intercoms, as well can be networked with IVO PA/VA system.

The basic version can be extended by additional extension modules (KKOC, WAAC, KSSC).



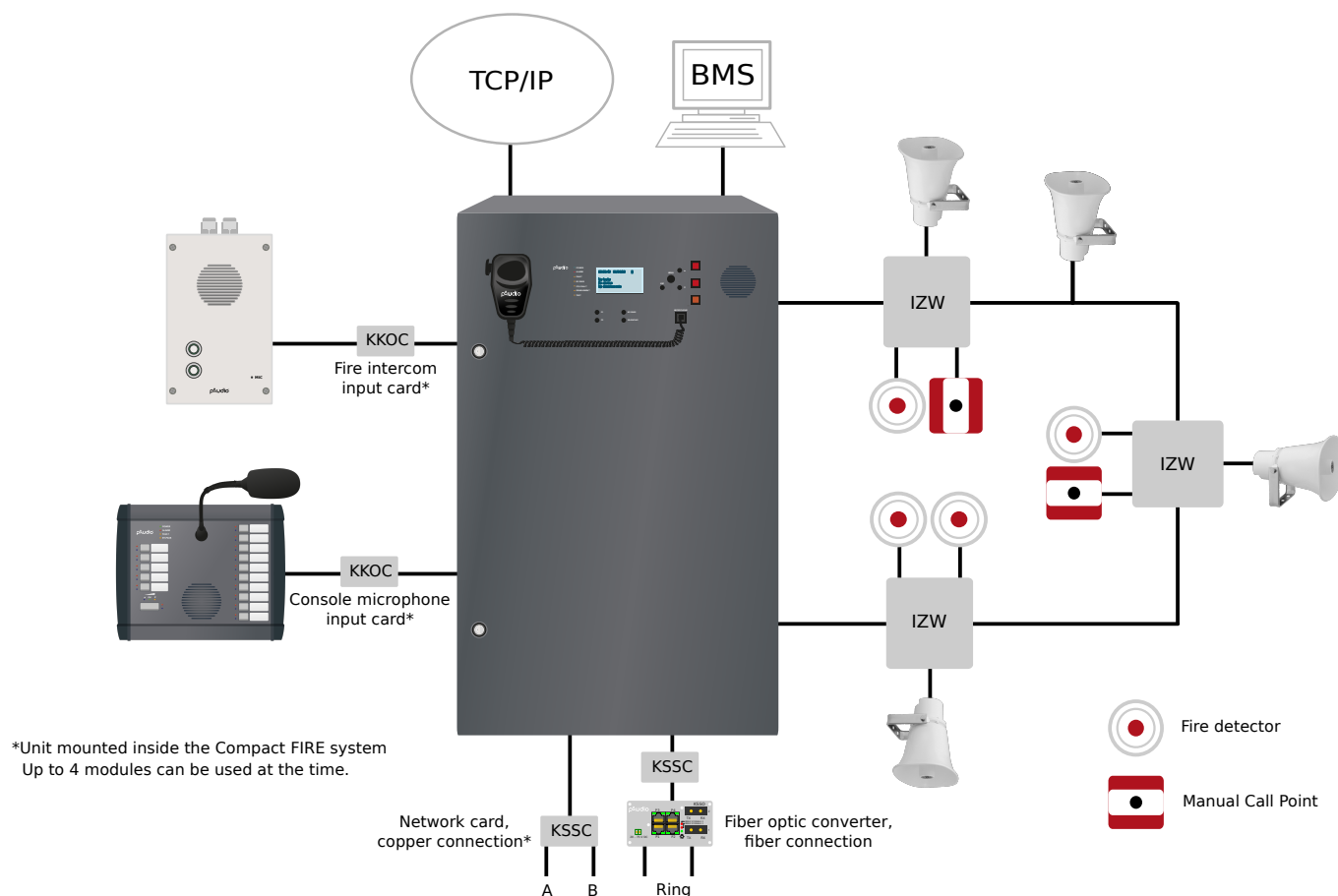
1438-CPR-0996

1438-CPR-1005

Features

- A fully equipped VA and fire detection system
- Certified to EN 54-2, EN 54-16 and EN 54-17
- Up to 128 addressable elements on loop
- Up to 2 loops, 16 single or A/B loudspeaker lines
- Maximum 500 W power load per loop
- Phase evacuation with separate redundant amplifier
- Real-time system monitoring
- 32-bit DSP audio processor
- Up to 32 subsystems in network
- Wide frequency response
- Ultra-low quiescent mode
- Modbus for 3rd party integration
- 12 monitored control inputs
- 3 output relays
- Built-in LCD screen
- Built-in monitoring loudspeaker
- Built-in hand-held alarm microphone
- 4 slots for additional system cards

Example configuration



Technical specification

General

Power supply	230 V AC, -15 % / +10 %
Total efficiency	> 86%
Idle consumption	< 5 W
Standards	EN54, CE
Mechanical	200 x 530 x 930 mm
Battery enclosure	200 x 530 x 200 mm (optional)
Operating temp.	-5 °C...+40 °C
Relative humidity	25%...90%
Indicators	Power, Alarm, Fault, Bypass, CPU fault, Disablement, Test
Connectors	Main supply 230 V AC, 12x control inputs, 3x relay outputs, 1x RS232/485, 1x RS485, 1x Ethernet, 1x USB 1x symmetrical audio input

Audio specification

Frequency response	10 Hz...30 kHz (- 3 dB)
THD+N distortion	< 0,1 % (1 kHz)
Signal / noise ratio	> 86 dB
Digital audio format	PCM 16 Bit/ 48 kHz

Others

3rd party integration	1x RS232/RS485 (Modbus)
Maintenance	1x USB, 1x Ethernet
Log event buffer	2048
Enclosure type	Metal, IP30
Max. battery capacity	Depends on the power supply
Extensions	KKOC microphone input card WAAC audio input card KSSC network card
Color	RAL7015 (Custom RAL available)

Specification per version

Datasheet

1-channel system, 500 W RMS

C-04-500-1	4 lines - (4x500 W)*, handheld microphone, redundant/monitoring amplifier (IVO C0, UIC, MR, 4SGC, 2x WB501, power supply + battery charger, wall-mount housing)
C-08-500-1	8 lines - (8x125 W)*, handheld microphone, redundant/monitoring amplifier (IVO C8, UIC, MR, 2x WB501, power supply + battery charger, wall-mount housing)
C-12-500-1	12 lines - (4x500 W, 8x125 W)*, handheld microphone, redundant/monitoring amplifier (IVO C8, UIC, MR, 4SGC, 2x WB501, power supply + battery charger, wall-mount housing)
C-16-500-1	16 lines - (16x125 W)*, handheld microphone, redundant/monitoring amplifier (IVO C8, UIC, MR, 8SGC, 2x WB501, power supply + battery charger, metal wall-mount casing)

1-channel system, 1000 W RMS

C-04-1000-1	4 lines - (4x500 W)*, handheld microphone, redundant/monitoring amplifier (IVO C0, UIC, MR, 4SGC, 3x WB501, power supply + battery charger, wall-mount housing)
C-08-1000-1	8 lines - (8x125 W)*, handheld microphone, redundant/monitoring amplifier (IVO C8, UIC, MR, 3x WB501, power supply + battery charger, wall-mount housing)
C-12-1000-1	12 lines - (4x500 W, 8x125 W)*, handheld microphone, redundant/monitoring amplifier (IVO C8, UIC, MR, 4SGC, 3x WB501, power supply + battery charger, wall-mount housing)
C-16-1000-1	16 lines - (16x125 W)*, handheld microphone, redundant/monitoring amplifier (IVO C8, UIC, MR, 8SGC, 3x WB501, power supply + battery charger, wall-mount housing)

2-channels system, 500 W RMS

C-04-500-2	4 lines - (4x500 W)*, handheld microphone, redundant/monitoring amplifier (IVO C0, UIC, MR, 4SGC, 3x WB501, power supply + battery charger, wall-mount housing)
C-08-500-2	8 lines - (8x125 W)*, handheld microphone, redundant/monitoring amplifier (IVO C8, UIC, MR, 3x WB501, power supply + battery charger, wall-mount housing)
C-12-500-2	12 lines - (4x500 W, 8x125 W)*, handheld microphone, redundant/monitoring amplifier (IVO C8, UIC, MR, 4SGC, 3x WB501, power supply + battery charger, wall-mount housing)
C-16-500-2	16 lines - (16x125 W)*, handheld microphone, redundant/monitoring amplifier (IVO C8, UIC, MR, 8SGC, 3x WB501, power supply + battery charger, wall-mount housing)

* Maximum load per loudspeaker line

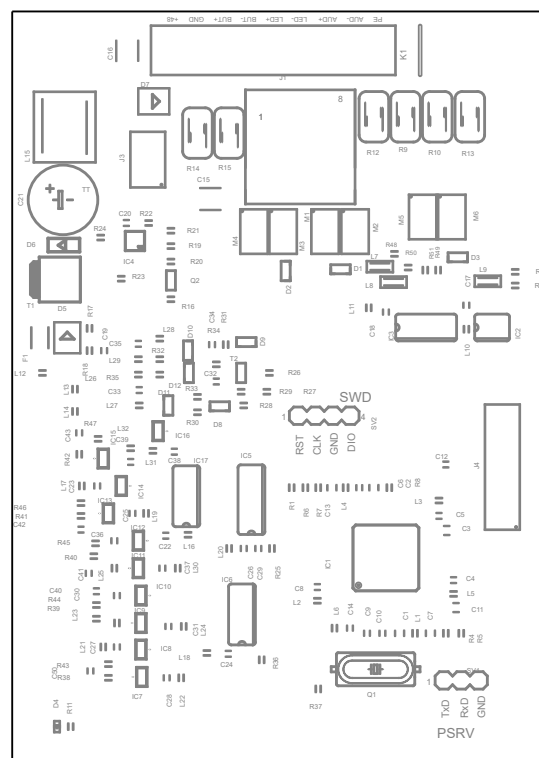
Extension modules

KKOC - console microphone card

KKOC card allows to connect alarm (MA, MAR), paging (MI) console microphones and fire intercoms (INT) to IVO Compact.

Features

- Support of up to 8 microphone consoles or 8 intercoms
- 32-bit DSP audio processor
- Digital communication
- Maximum cable length 1200 m (RS485)
- Optional redundant fiber connection with alarm microphones
- Wide frequency response
- Ultra-low quiescent mode
- Direct supply of connected units (copper connection)
- Over voltage, over current and short circuit protection

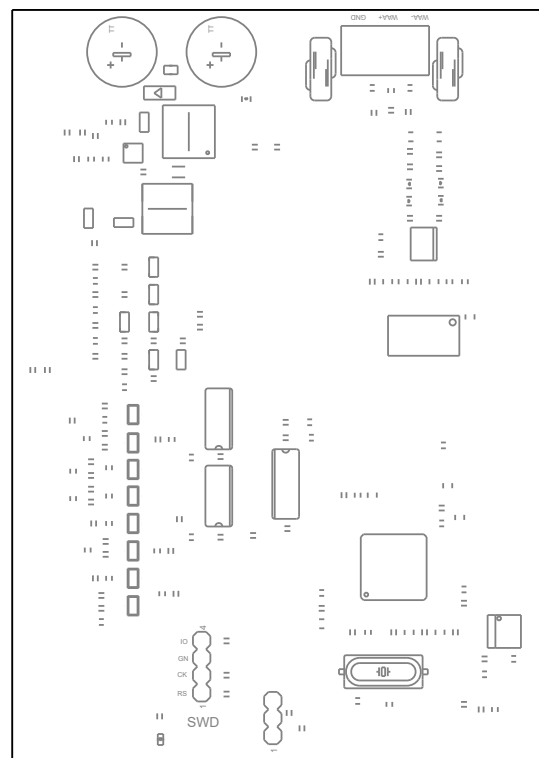


WAAC - audio input card

WAAC card allows to connect any kind of analog audio sources and background measurement microphones (MPT) to the IVO Compact.

Features

- Symmetrical 0 dB input
- Phantom power
- 32-bit DSP audio processor
- Wide frequency response
- Ultra-low quiescent mode



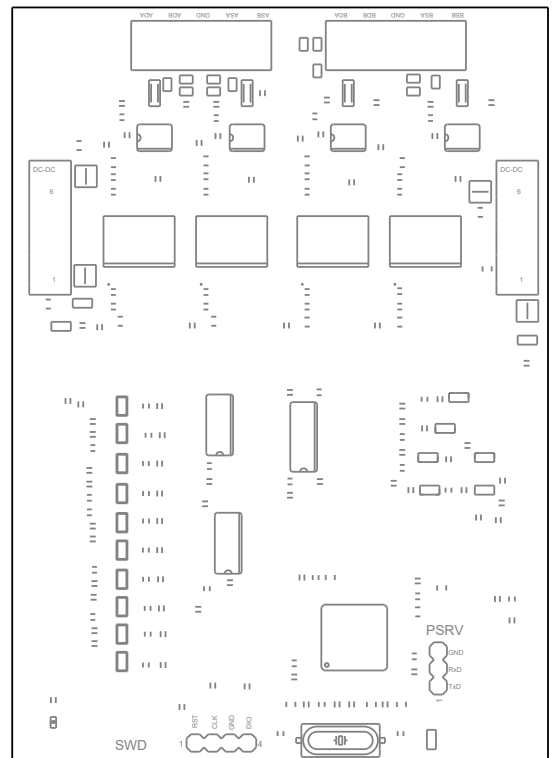
Extension modules

KSSC - network card

The KSSC card allows to link and communicate IVO Compact with any other IVO system..

Features

- Up to 32 subsystems in network
- Redundancy of transmission path
- No significant audio signal delays between subsystems
- Full synchronization of messages between main units
- Galvanic isolated circuits
- Digital communication
- Maximum cable length between subsystems 1200 m (RS485)
- Point-point, multi-point or ring configuration
- Ultra-low quiescent mode
- Over voltage, over current and short circuit protection

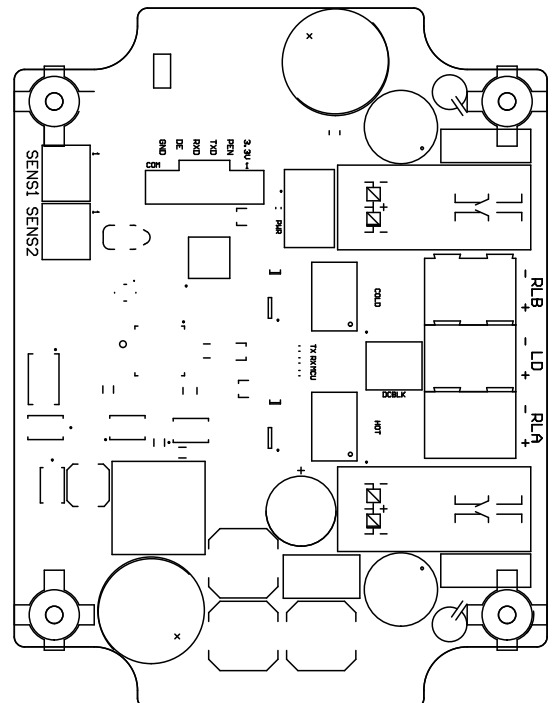


IZW - addressable short-circuit isolator

IZW loop module allows to connect any kind of convectional fire detectors, manual call points and 100 V fire loudspeakers.

Features

- Up to 64 modules on loop
- Up to 2 addressable lines for detectors and/or MCP's
- Short-circuit isolation function
- 32-bit DSP audio processor
- Wide frequency response
- Ultra-low quiescent mode



IVO compatible equipment

Console microphones

MA10 Emergency gooseneck microphone, 5+10 buttons, speaker built-on, digital communication, 24/48 V DC, ALU
MA20 Emergency gooseneck microphone, 5+20 buttons, speaker built-on, digital communication, 24/48 V DC, ALU
MA30 Emergency gooseneck microphone, 5+30 buttons, speaker built-on, digital communication, 24/48 V DC, ALU
MA40 Emergency gooseneck microphone, 5+40 buttons, speaker built-on, digital communication, 24/48 V DC, ALU

MAR10 Emergency hand-held PTT microphone, 5+10 buttons, speaker built-on, digital communication, 24/48 V DC, wall installation
MAR20 Emergency hand-held PTT microphone, 5+20 buttons, speaker built-on, digital communication, 24/48 V DC, wall installation
MAR30 Emergency hand-held PTT microphone, 5+30 buttons, speaker built-on, digital communication, 24/48 V DC, wall installation
MAR40 Emergency hand-held PTT microphone, 5+40 buttons, speaker built-on, digital communication, 24/48 V DC, wall installation

MAR10K MAR10 emergency microphone in metal housing, IP30
MAR20K MAR20 emergency microphone in metal housing, IP30
MAR30K MAR30 emergency microphone in metal housing, IP30
MAR40K MAR40 emergency microphone in metal housing, IP30

MAR10KR MAR10 emergency microphone, metal housing, IP30, redundant fiber digital communication, 24 V DC/7 Ah power supply
MAR20KR MAR20 emergency microphone, metal housing, IP30, redundant fiber digital communication, 24 V DC/7 Ah power supply

MI10 Paging gooseneck microphone console, 5+10 buttons, speaker built-on, digital communication, 24/48 V DC
MI20 Paging gooseneck microphone console, 5+20 buttons, speaker built-on, digital communication, 24/48 V DC
MI30 Paging gooseneck microphone console, 5+30 buttons, speaker built-on, digital communication, 24/48 V DC
MI40 Paging gooseneck microphone console, 5+40 buttons, speaker built-on, digital communication, 24/48 V DC

Fire intercoms

INT2P Fire intercom, in-wall installation, 2 backlit buttons, digital communication, 24/48 V DC
INT2N Fire intercom, wall installation, 2 backlit buttons, digital communication, 24/48 V DC

Accessories

IZW Addressable short-circuit isolators
PP Cable connection ABS box unit for microphones consoles connection
MPT Background noise microphone for automatic gain control, ABS
KSSO24 Network or emergency redundant microphone fiber optic module, ring connection, max distance 20 km, 24 V DC, DIN (TS35)



Rzeczpospolita
Polska



Unia Europejska
Europejski Fundusz
Rozwoju Regionalnego

